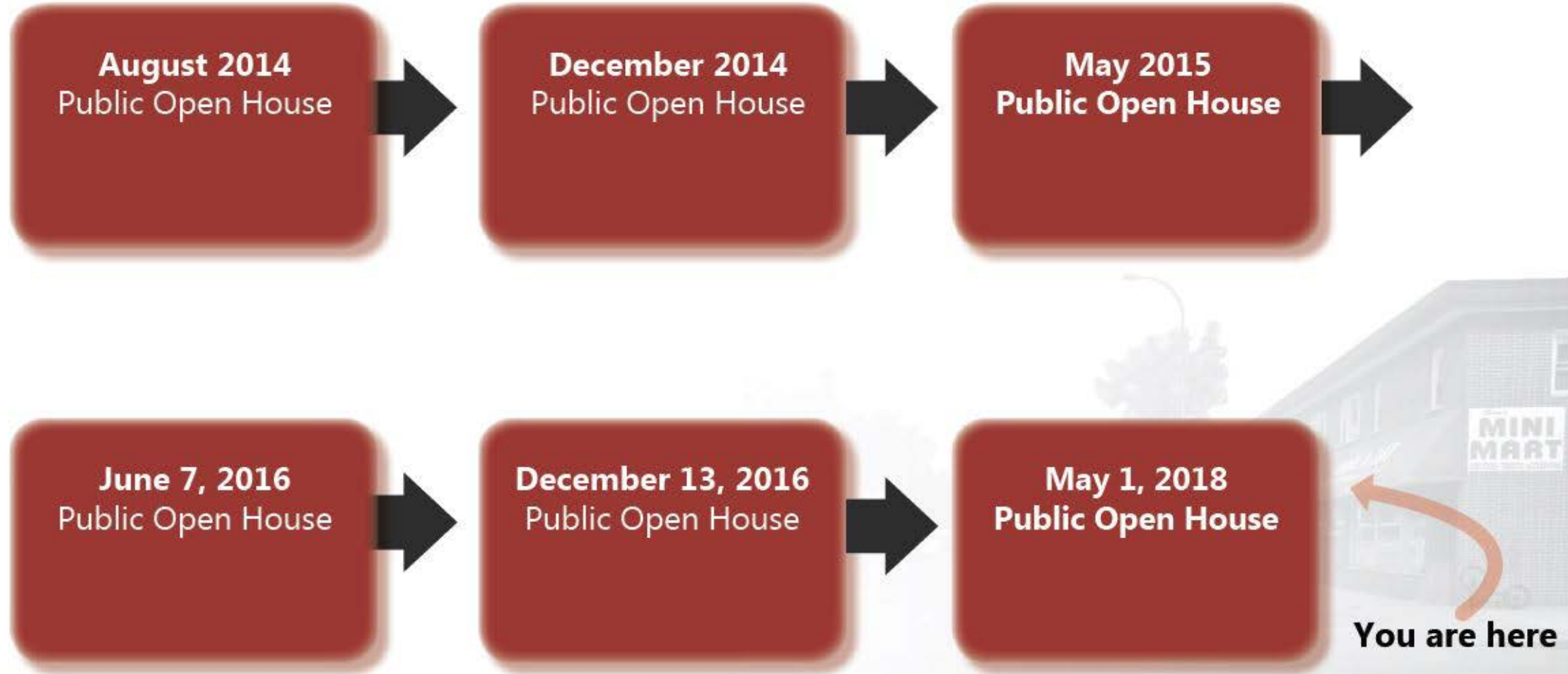


# Southview Blvd & 3<sup>rd</sup> Avenue Improvement Project

Open House  
May 1, 2018



# Public Involvement History



# Overview

**Project  
Basics**

**Detour  
Routes**

**Access  
Concerns**

**Construction  
Communications**



# Project Basics



# Project Team



**Leading Agency**

**Leading Agency**

**Engineering  
Consultant**

**Construction  
Contractor**



# Project Need

## Aging Infrastructure



## Ped/Bike & Transit



## Traffic Operations & Safety



## Streetscape Elements

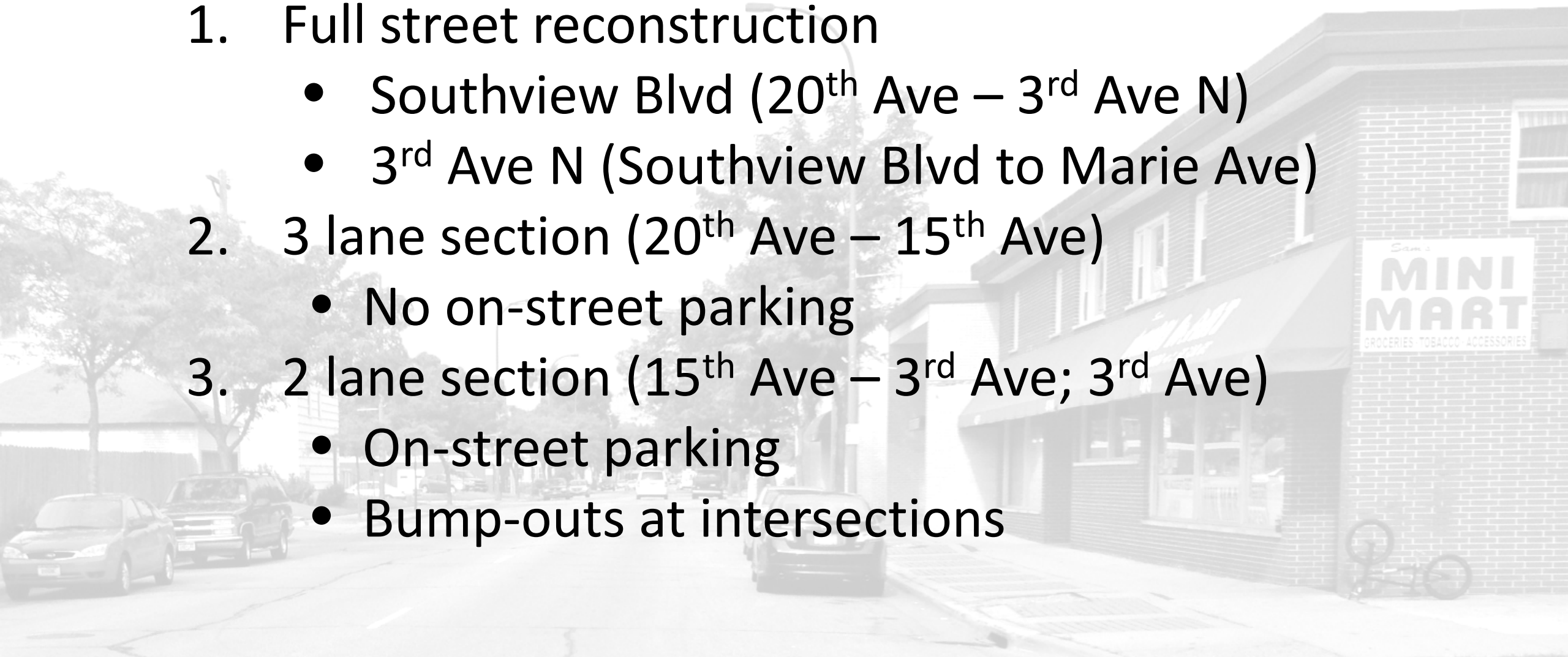






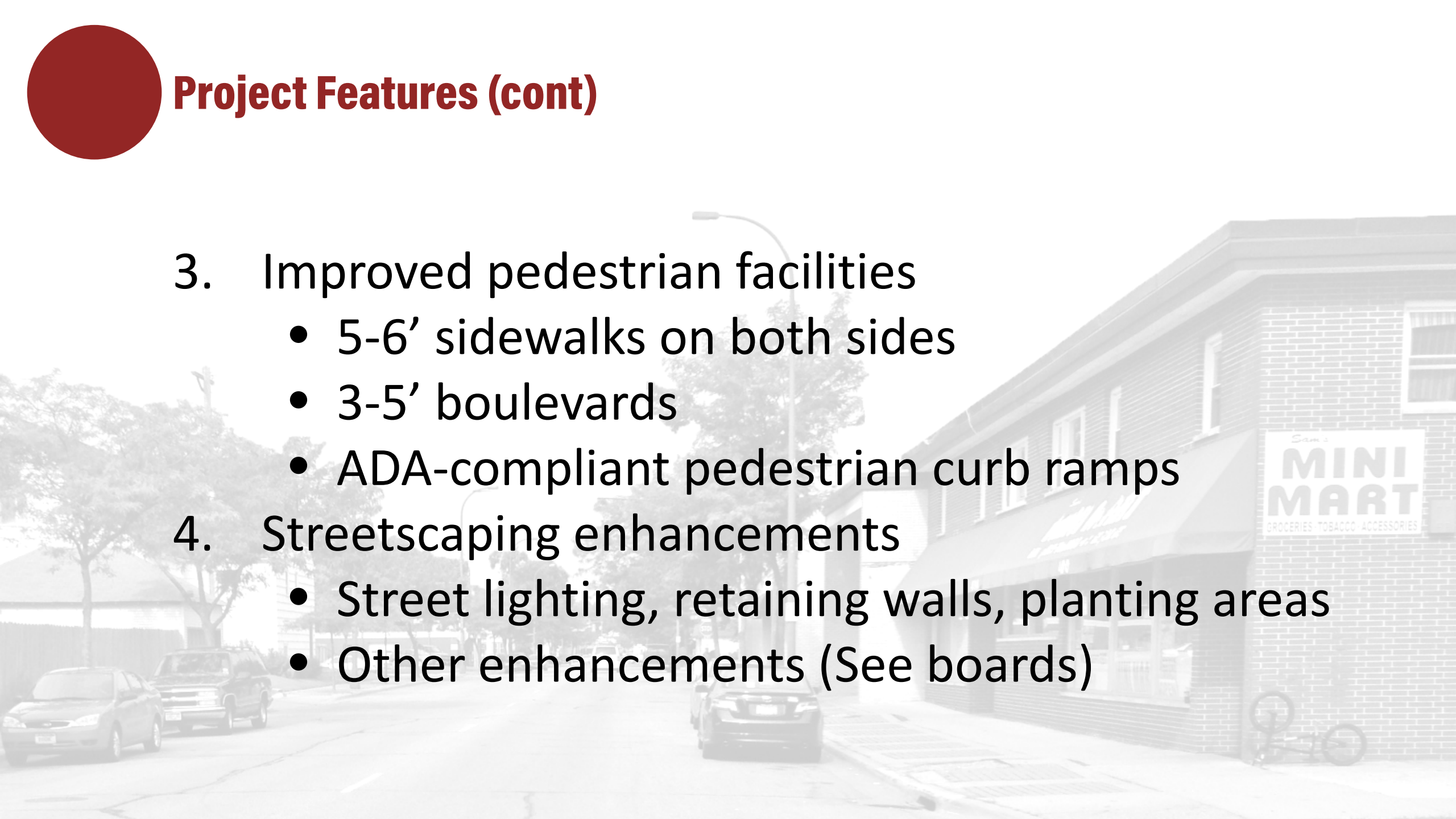
## Project Features

1. Full street reconstruction
  - Southview Blvd (20<sup>th</sup> Ave – 3<sup>rd</sup> Ave N)
  - 3<sup>rd</sup> Ave N (Southview Blvd to Marie Ave)
2. 3 lane section (20<sup>th</sup> Ave – 15<sup>th</sup> Ave)
  - No on-street parking
3. 2 lane section (15<sup>th</sup> Ave – 3<sup>rd</sup> Ave; 3<sup>rd</sup> Ave)
  - On-street parking
  - Bump-outs at intersections





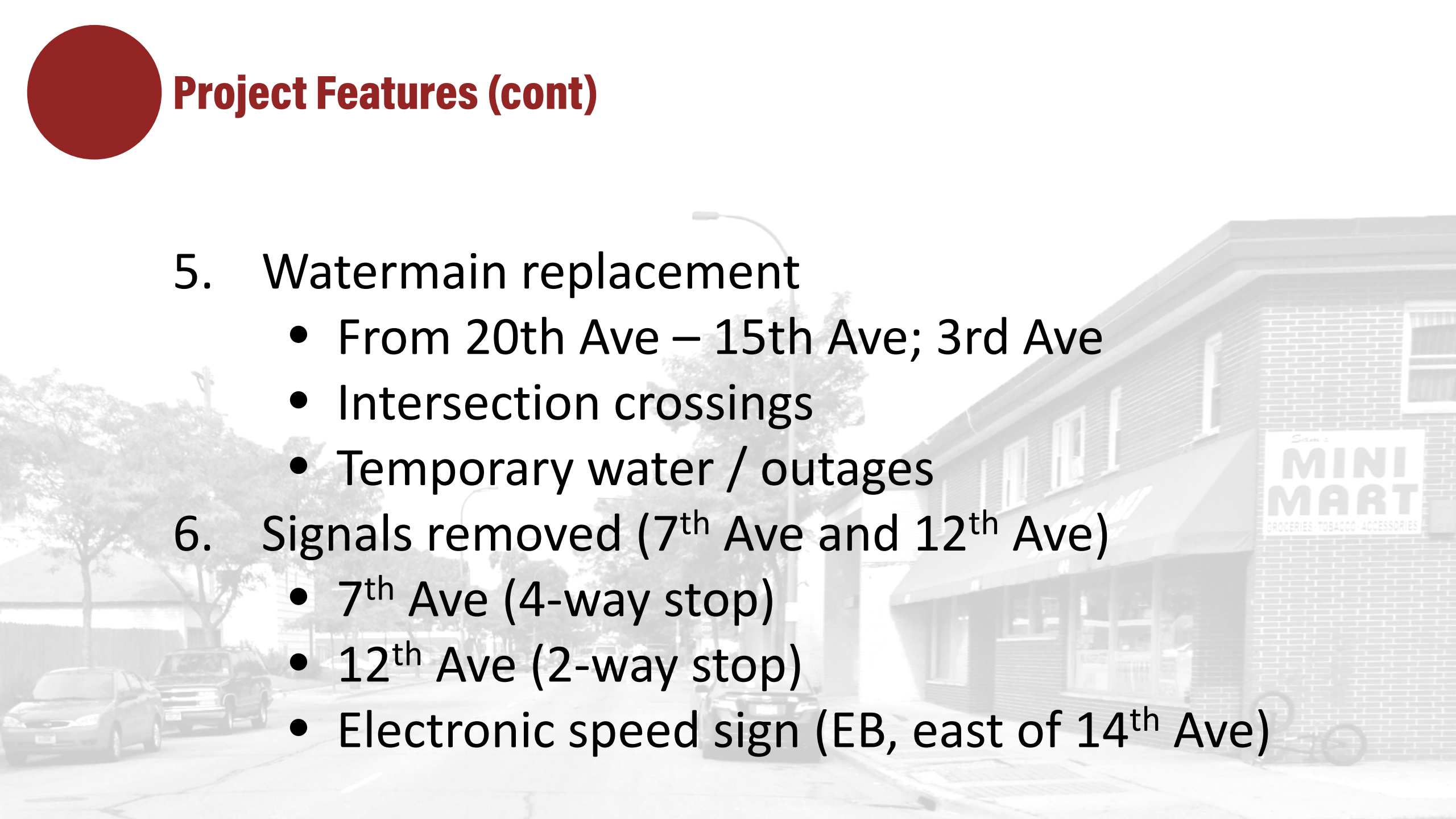
## Project Features (cont)

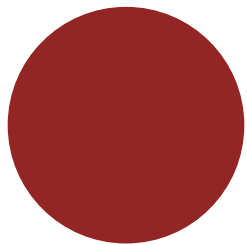
- 
3. Improved pedestrian facilities
    - 5-6' sidewalks on both sides
    - 3-5' boulevards
    - ADA-compliant pedestrian curb ramps
  4. Streetscaping enhancements
    - Street lighting, retaining walls, planting areas
    - Other enhancements (See boards)





## Project Features (cont)

- 
5. Watermain replacement
    - From 20th Ave – 15th Ave; 3rd Ave
    - Intersection crossings
    - Temporary water / outages
  6. Signals removed (7<sup>th</sup> Ave and 12<sup>th</sup> Ave)
    - 7<sup>th</sup> Ave (4-way stop)
    - 12<sup>th</sup> Ave (2-way stop)
    - Electronic speed sign (EB, east of 14<sup>th</sup> Ave)



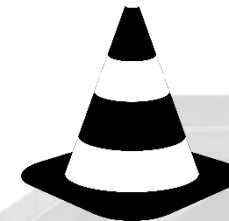
## Construction Overview



**Primary impacts**  
May-October



**Final completion**  
Mid-November



**Typical work week**  
5-6 days; M-F/Sa

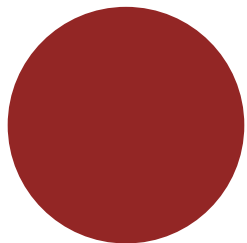


**2 main stages**  
Next slides



**Stages closed to traffic**  
Some crossings open





# Stages and Schedule

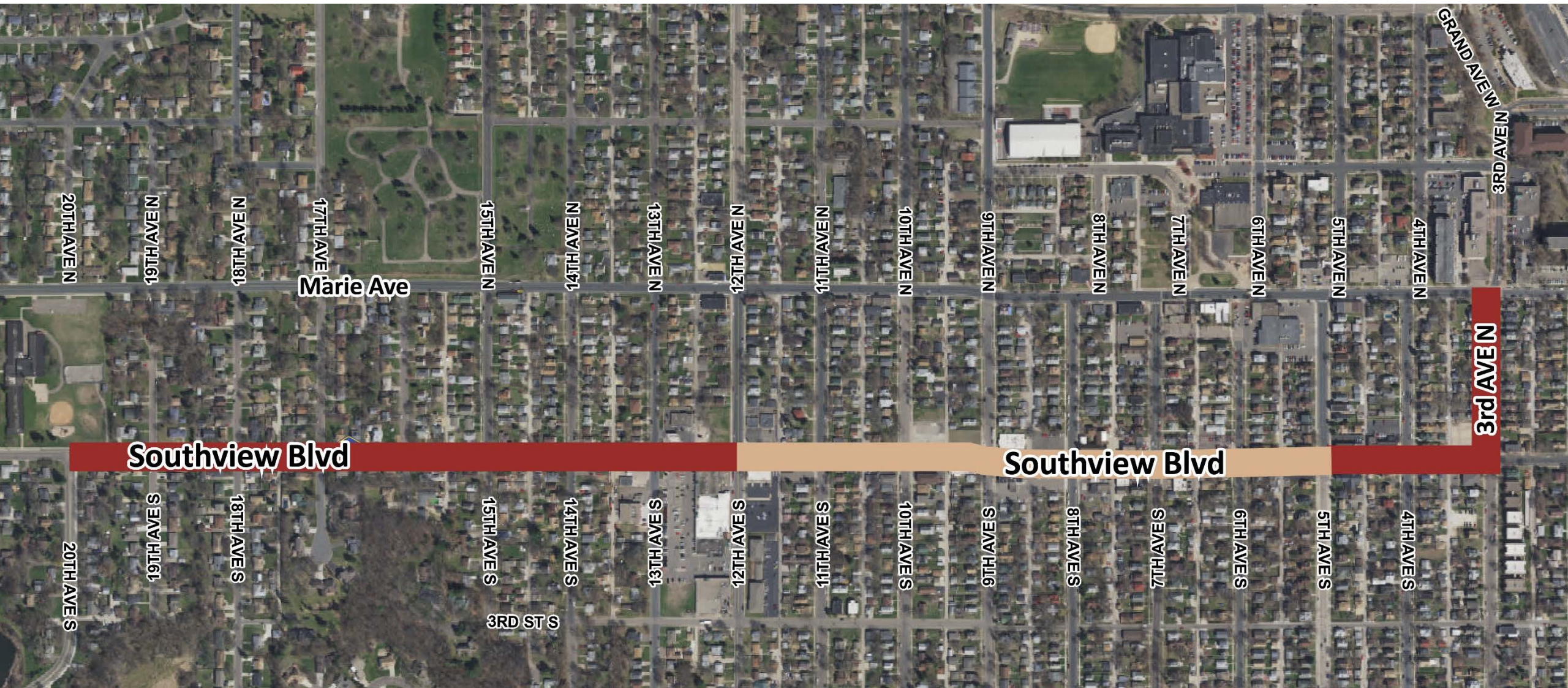
**STAGE 1**  
OUTER SEGMENTS  
May-End of July



**STAGE 2**  
INNER SEGMENT (12TH AVE-5TH AVE)  
July - October



**FALL 2018**  
Project Complete!







# Detour Routes



# Why Detour?

1. Completes project in one year

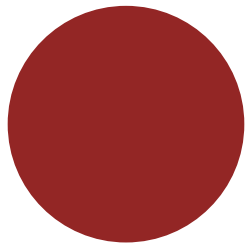
2. Provides consistent and safe path for public

3. Flexibility in providing pedestrian access

4. Safer for public and workers







# Stage 1 Detour

## May-End of July

WEST SEGMENT: SOUTHVIEW BLVD FROM 12TH AVE TO 20TH AVE  
EAST SEGMENT: 3RD AVE, SOUTHVIEW BLVD FROM 3RD AVE TO 5TH AVE

 BUSINESS ACCESS FOCUS AREA

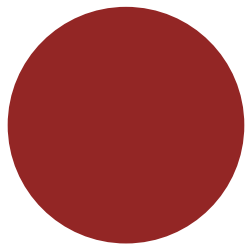
 PERMANENT ACCESS CLOSURE

 DETOUR ROUTE

 LOCAL TRAFFIC







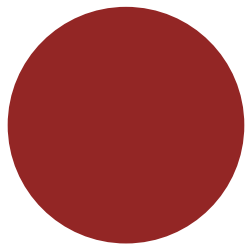
# Stage 1 Detour

## May-End of July

West Segment (20<sup>th</sup> Ave to 12<sup>th</sup> Ave)



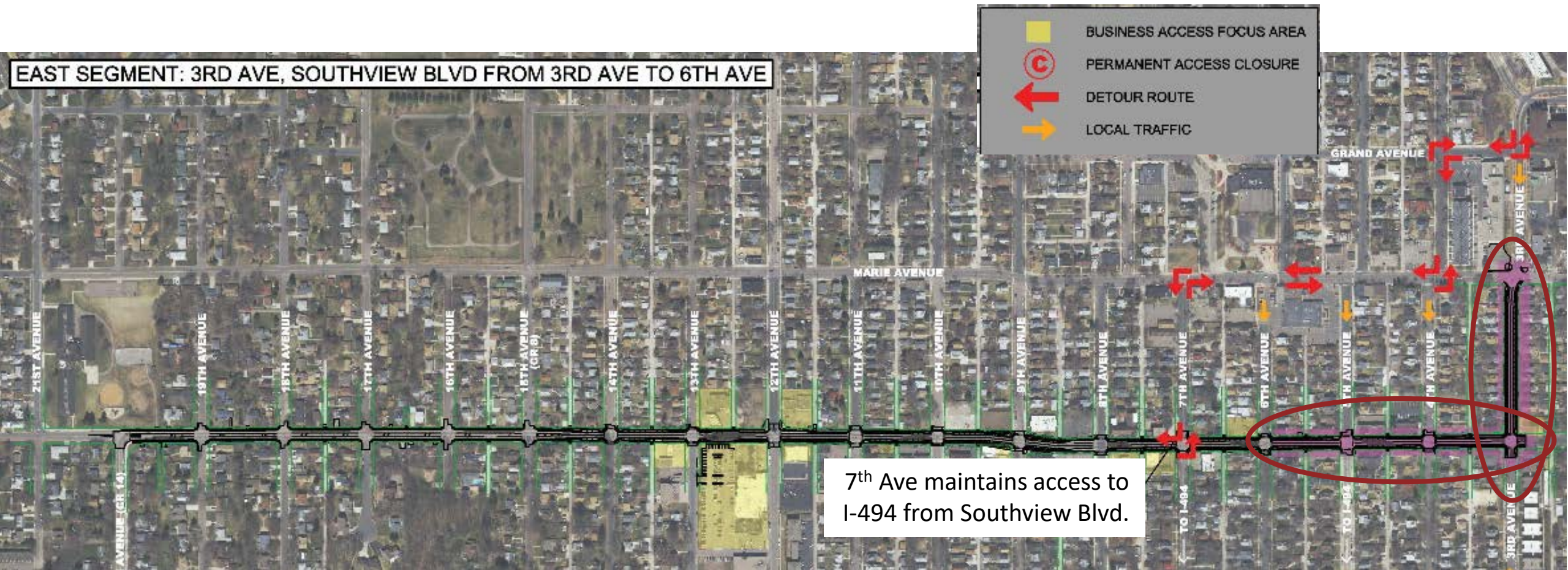




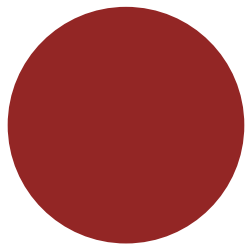
# Stage 1 Detour

May-End of July

East Segment (Southview 6<sup>th</sup> Ave to 3<sup>rd</sup> and 3<sup>rd</sup> Ave)







# Stage 2 Detour

## July-End of October

Central Segment (12<sup>th</sup> Ave to 6<sup>th</sup> Ave)







# Access Concerns



# Access Concerns

1. Pedestrian  
Access

2. Dead-End  
Roads

3. Business  
Access





# Access Concerns



**Pedestrian Access**



**Dead End Roads**



# Business Signage





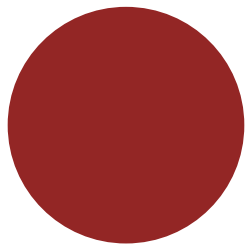
# Construction Communications





# Communication Goals

1. Keep stakeholders well informed
2. Provide consistent contacts
3. Promote 2-way communication
4. Be proactive whenever possible
5. Provide quick action when reacting



# Stay Informed

## ACCESS, PARKING, DETOUR QUESTIONS



### Project Hotline

612-619-6284

southview@bolton-menk.com

## WEEKLY PROGRESS UPDATES



**[www.southviewblvd.com](http://www.southviewblvd.com)**

Go to "Construction" tab

## EMERGENCY SITUATIONS



**651-322-2323**

## DETOUR MAPS AND STAGING GRAPHICS



**[www.southviewblvd.com](http://www.southviewblvd.com)**

## DAILY UPDATES



**@SouthviewBoulevard**

## EMAIL UPDATE SIGN UP

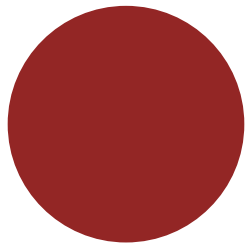


**[www.southviewblvd.com](http://www.southviewblvd.com)**

Enter your email!







## Contacts

**Nick Amatuccio** – Bolton & Menk

612-965-3926

[nickam@bolton-menk.com](mailto:nickam@bolton-menk.com)

**Del Goddard** – Dakota County

952-891-7922

[Del.goddard@co.dakota.mn.us](mailto:Del.goddard@co.dakota.mn.us)

**Kyle Johnson** – Bolton & Menk

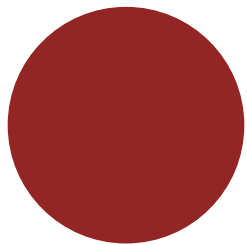
612-756-4339

[kylejo@bolton-menk.com](mailto:kylejo@bolton-menk.com)

**Chris Hartzell** – South St. Paul

651-554-3210

[chartzell@sspmn.org](mailto:chartzell@sspmn.org)



**Questions**

**Thank You**

**Project Hotline**

612-619-6284

**Project Email**

[southview@bolton-menk.com](mailto:southview@bolton-menk.com)

**Project Website**

[www.southviewblvd.com](http://www.southviewblvd.com)