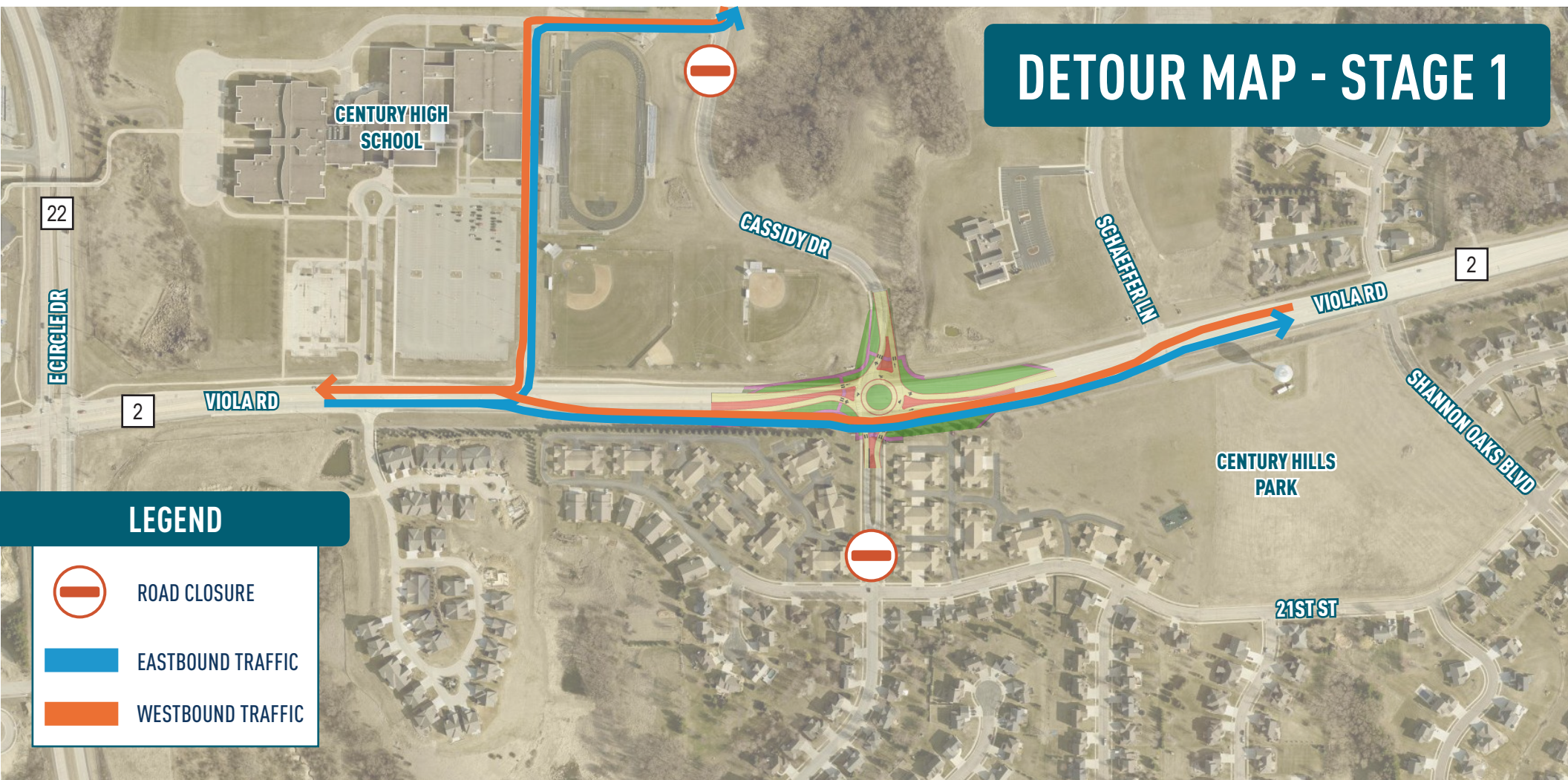
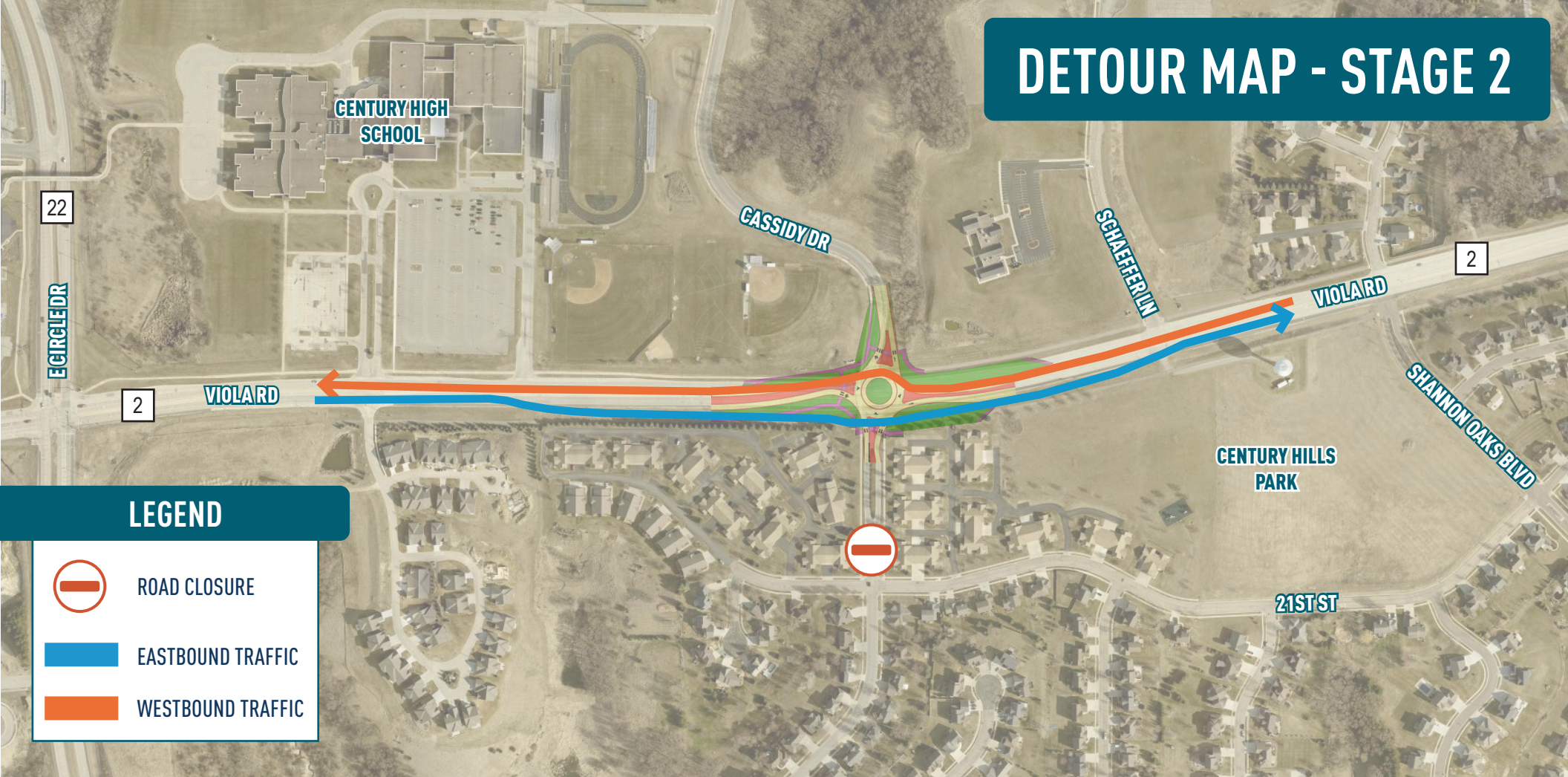


DETOUR MAP - STAGE 1



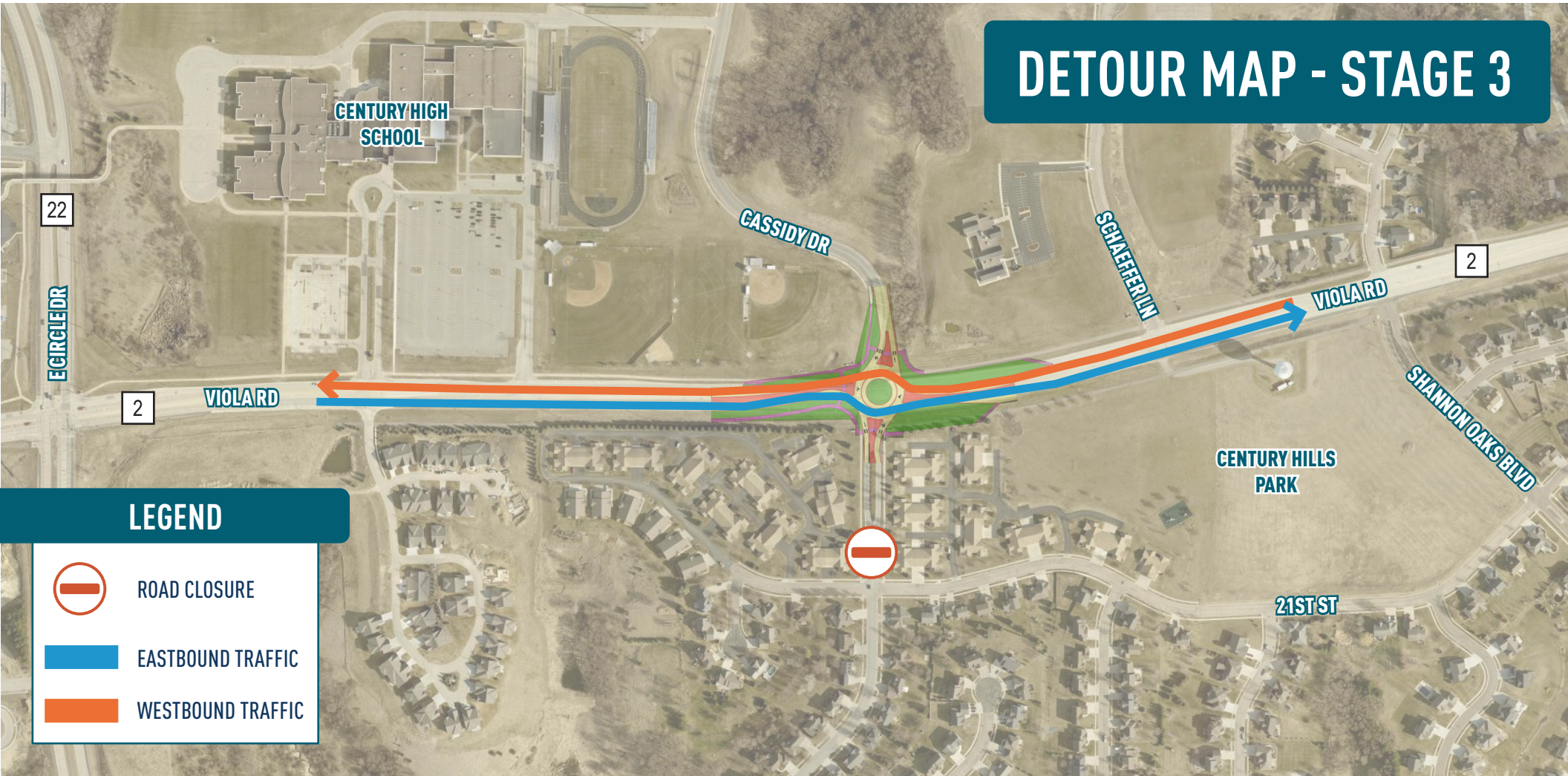
Stage 1 allows local access to Cassidy Drive utilizing Century High School's interior roadways. Temporary traffic control and pedestrian crossing enhancements will be implemented. The north half of Viola Road and Cassidy Drive are constructed at this time. Through traffic on Viola Road is shifted to the eastbound shoulder and temporary paving south of the roadway.

DETOUR MAP - STAGE 2



During Stage 2, all side streets on the north side of Viola Road are now open. Westbound traffic is driving through the roundabout on new pavement. Eastbound traffic remains on the eastbound shoulder and temporary paving while the south half of Viola Road and the roundabout are constructed.

DETOUR MAP - STAGE 3



LEGEND

-  ROAD CLOSURE
-  EASTBOUND TRAFFIC
-  WESTBOUND TRAFFIC

During Stage 3, all side streets on the north side of Viola Road are now open. Eastbound and westbound traffic is driving in the roundabout on new pavement. The south leg of the roundabout on Century Hills Drive is constructed, temporary pavement is removed, and the trail on the south side of Viola Road near the intersection is constructed.