

City of Wabasha

# DOWNTOWN STREETSCAPE PLAN

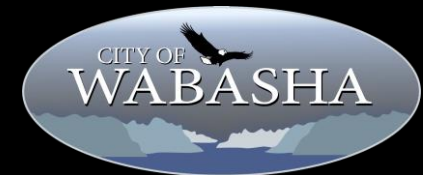
CITY COUNCIL MEETING

October 4, 2022



**BOLTON  
& MENK**

Real People. Real Solutions.



# Project Background – 2023 Project

---

## Relation to 2023 Street Reconstruction Project:

- Separate but related project
- Streetscape Plan project includes both elements that have funding identified, and projects that do not currently have funding
- Looked for opportunities to include elements with 2023 project where it made sense (scope of work, budget, proximity to street reconstruction project, etc.)
- Projects not included in 2023 project will be future implementation/opportunity driven projects

# Project Background - Elements



## LEGEND:

### STREET AND UTILITY IMPROVEMENTS

-  STREET AND UTILITY IMPROVEMENT PROJECT EXTENTS

### DOWNTOWN STREETScape

-  STREETScape IMPROVEMENTS
-  CONNECTION TO BEACH PARK
-  RIVER WALK/RIVER CONNECTION
-  SPECIAL OPPORTUNITY AREA
-  EXISTING PARK/GATHERING SPACE
-  ENTRY SIGNAGE LOCATION

# Project Background - Schedule

## 2023 STREET & UTILITY IMPROVEMENTS

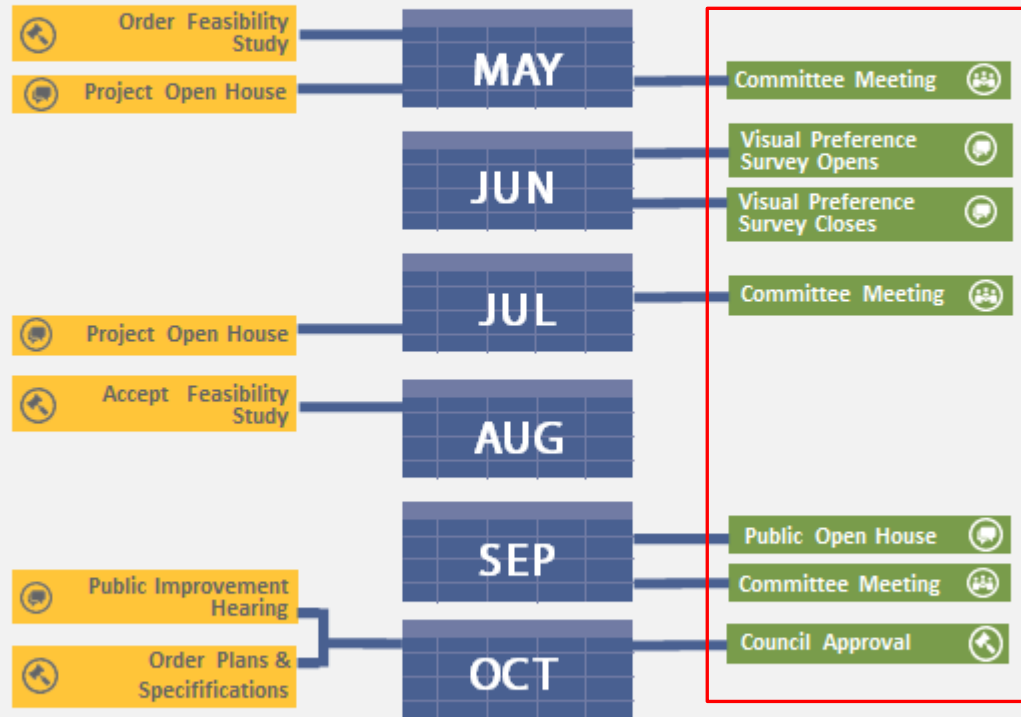
The street improvements will consist of the full reconstruction of streets, sidewalks, sanitary sewer, watermain, and storm sewer.

- Bridge Avenue from 4th Grant Blvd W to Main Street W
- Main Street W from Bridge Avenue to Pembroke Ave
- Pembroke Avenue from Main Street W to 4th Grant Blvd W

## DOWNTOWN STREETScape PLAN

The streetscape plan will consider the following elements in and around the downtown:

- Wayfinding & community entry signage
- Downtown identity & site amenities
- Enhancing underutilized spaces under the bridge
- Strengthening the connection to beach park
- Enhancing trail connectivity along the river



## FALL 2022-SUMMER 2023

More community engagement opportunities to occur through design and construction. Check the website for the full schedule.



## Highlights:

- Project duration May-October 2022
- 3 Steering Committee Meetings
- Online Visual Preference Survey
- Septoberfest Pumpkin Derby Pop-Up Event

# Project Outcomes

## Downtown Streetscape Plan Document

- Report memorializes project processes and recommendations
- Document a guide for future implementation
- Useful for seeking project funding



Appendix  
ITEMS RECOMMENDED FOR INCLUSION WITH :

**BOLTON & MENK**  
PRELIMINARY ENGINEERING  
WABASHA DOWNTOWN  
CITY OF WABASHA  
BMI PROJECT

Item	Item Description
<b>STREETSCAPE AMENITIES</b>	
1	4" COLORED CONCRETE WALK
2	PLANTERS (OR ALTERNATE LANDSCAPE TREATMENT)
3	BENCH
4	WASTE RECEPTACLE
5	STREETSCAPE TREES (TREE GRATE, STRUCTURAL)
6	BIKE RACK
7	MOBIL (WAITING) SIGN
8	INFORMATION SIGN TYPE SPECIAL (POLE MOUNTED)
9	ADA COMPLIANCE IMPROVEMENTS
<b>LIGHTING</b>	
1	DOWNTOWN LIGHTING WITH DOUBLE ARM
<b>WALNUT AVENUE CONNECTION</b>	
1	WALNUT AVENUE IMPROVEMENTS
<b>PUBLIC RESTROOM</b>	
1	PUBLIC RESTROOM AND SIDEWALK



**Elements for Inclusion  
with 2023 Street  
Reconstruction Project  
(Funded Project Elements)**

# Downtown Streetscape



PRIMARY CONCRETE - PLAIN GRAY



BENCH - IRON W/ RECYCLED PLASTIC



HISTORIC ACORN LIGHTING - 14' POLE



PLANTER POT W/ RESERVOIR



BIKE RACK



ACCENT CONCRETE - COLORED



METAL GRATES WITH OVERSTORY TREES



LITTER RECEPTACLE



WAYFINDING SIGNAGE



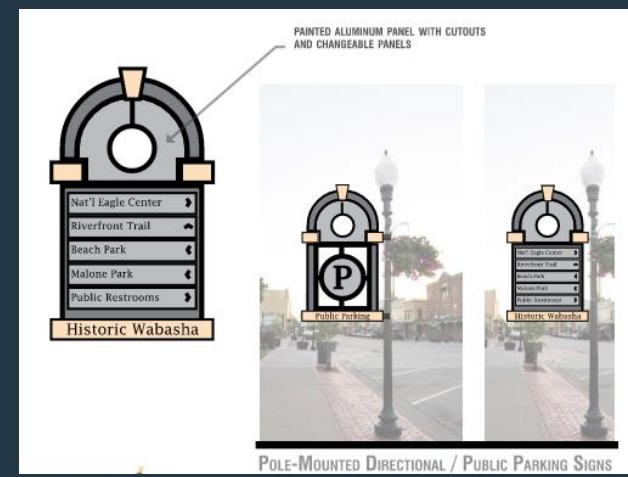
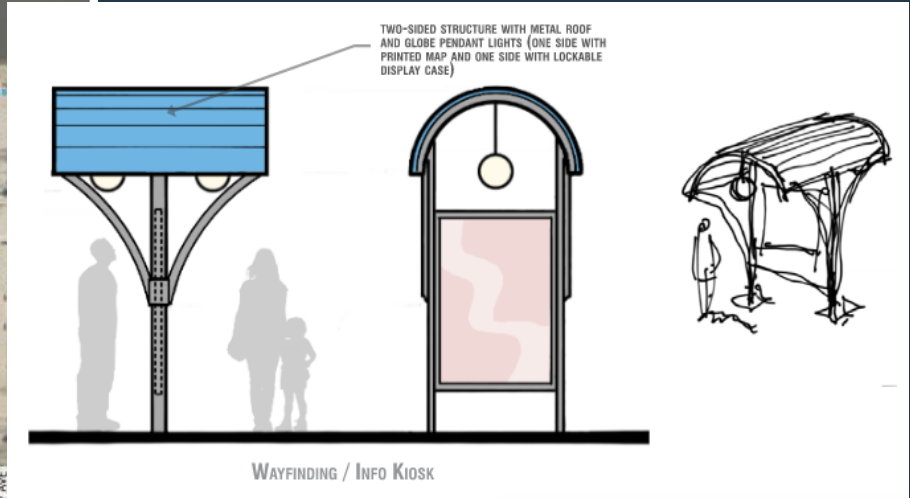
INFORMATIONAL KIOSK

# Wayfinding Signage



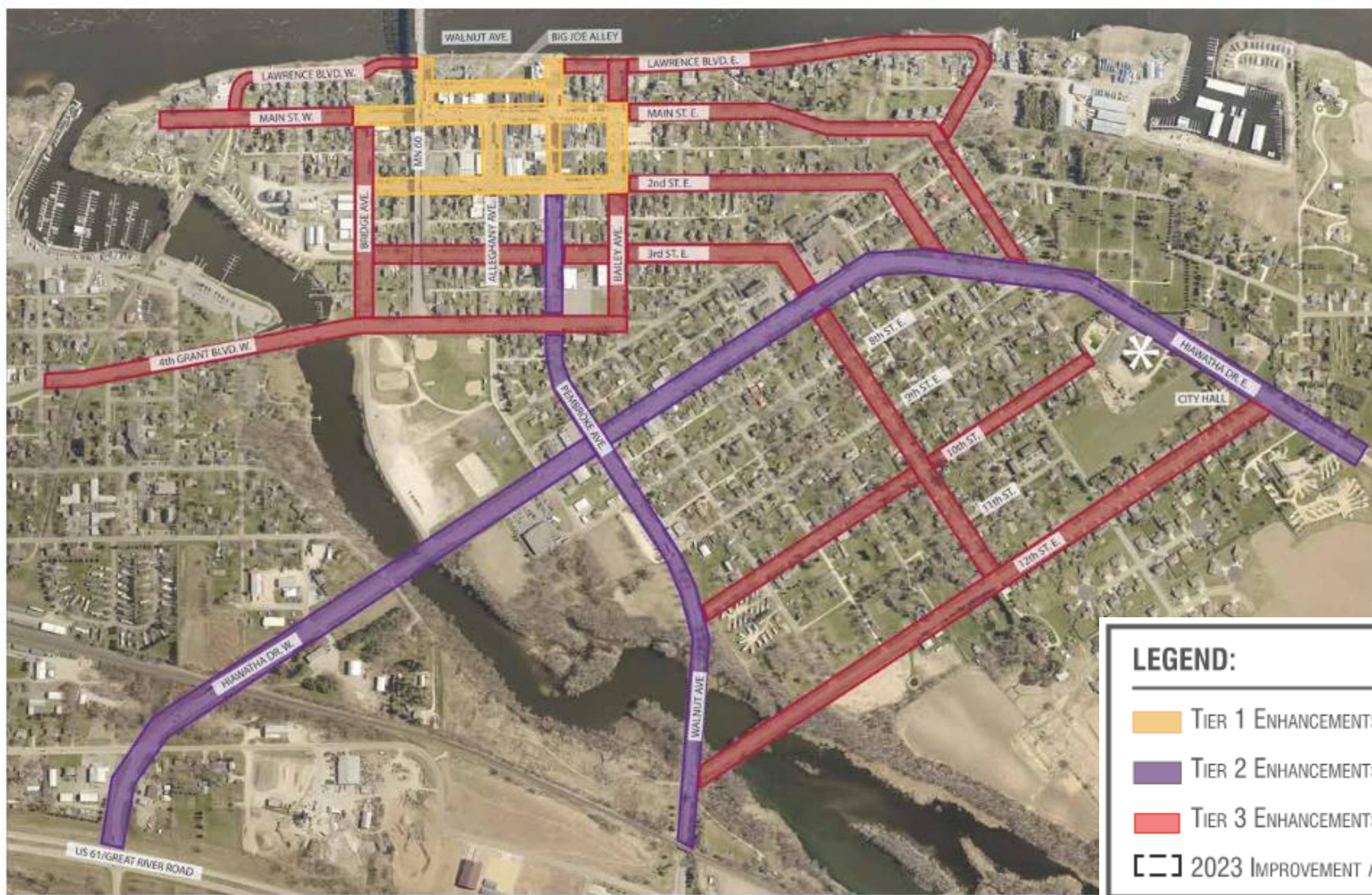
**LEGEND:**

- ✱ POLE-MOUNTED PUBLIC PARKING SIGN
- ✱ POLE-MOUNTED DIRECTIONAL SIGN
- ✱ WAYFINDING/INFORMATION KIOSK
- ✱ POTENTIAL COMMUNITY GATEWAY SIGN





# Streetscape Tiers/Future Implementation




**TIER 1** AREAS OF HEAVIEST PEDESTRIAN CONCENTRATION AND COMMERCIAL BUSINESS ACTIVITY

**TIER 2** PRIMARY VEHICULAR COMMUNITY ENTRANCE ROUTES

**TIER 3** SECONDARY VEHICULAR AND PEDESTRIAN CIRCULATION ROUTES (ROUTES SHOULD INCLUDE SIDEWALK CONNECTIONS)

## LEGEND:

 TIER 1 ENHANCEMENTS

 TIER 2 ENHANCEMENTS

 TIER 3 ENHANCEMENTS

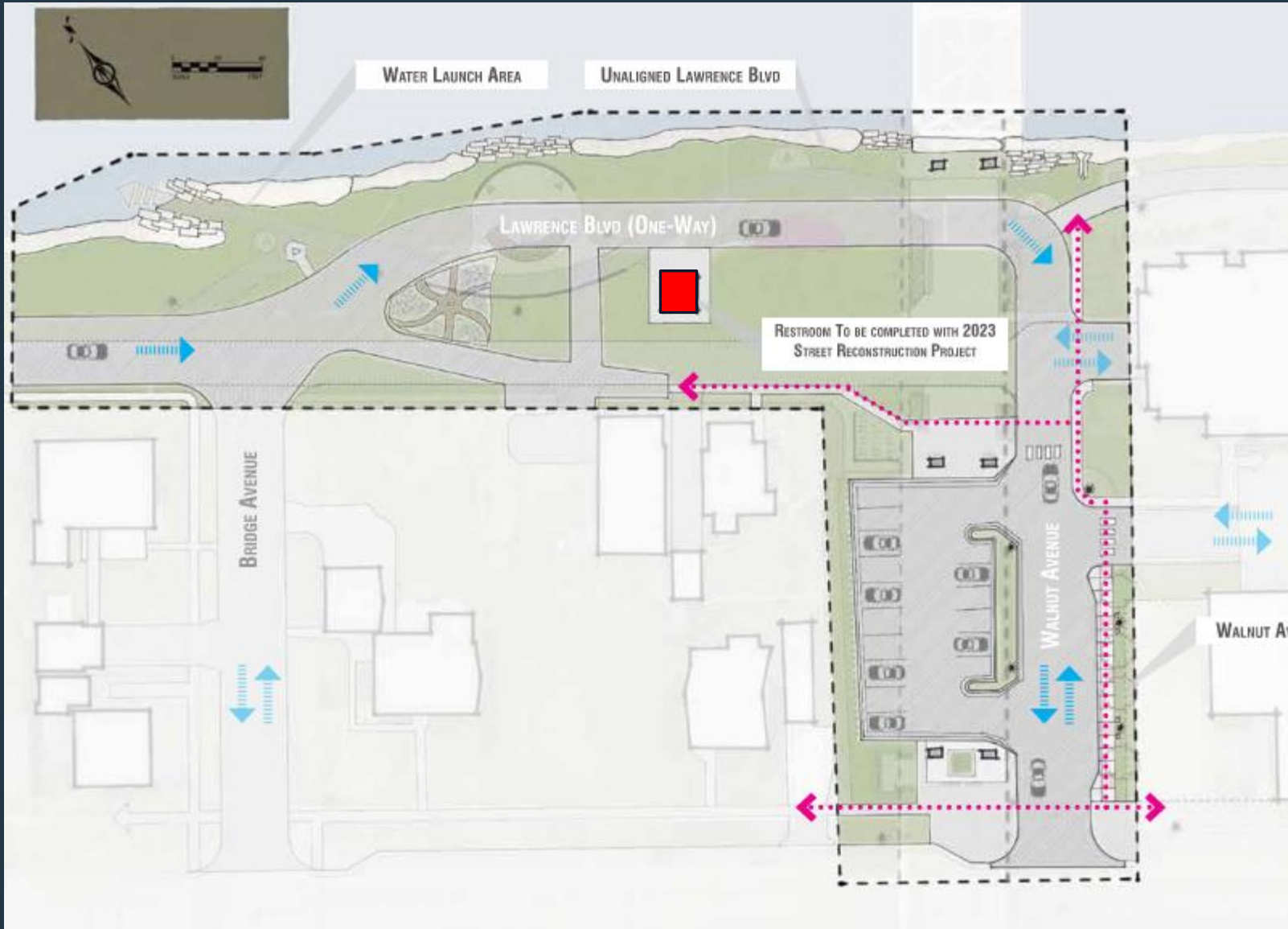
 2023 IMPROVEMENT AREA

# Walnut Avenue Promenade



- Direct connection between downtown and the river & MRT trail
- Directly adjacent to work on 2023 project (Main Street to the south, ped ramps to the north)
- Treatments complimentary to proposed Main Street improvements

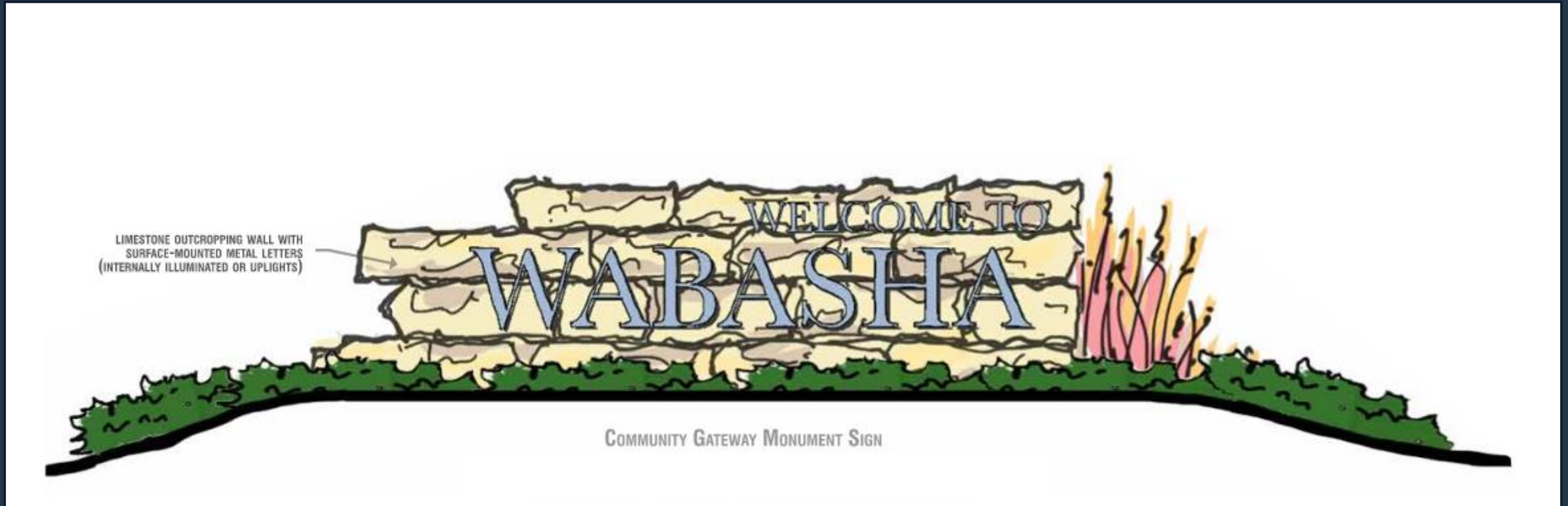
# Public Restroom



- 4 Locations Discussed
- Priority was the area near Lawrence Blvd./Highway 60 Bridge
- Preference for a four season (or insulated three season) structure
- One or two stall, with opportunities for informational signage on exterior
- Facility placed to allow for future expansion of Riverfront Plaza

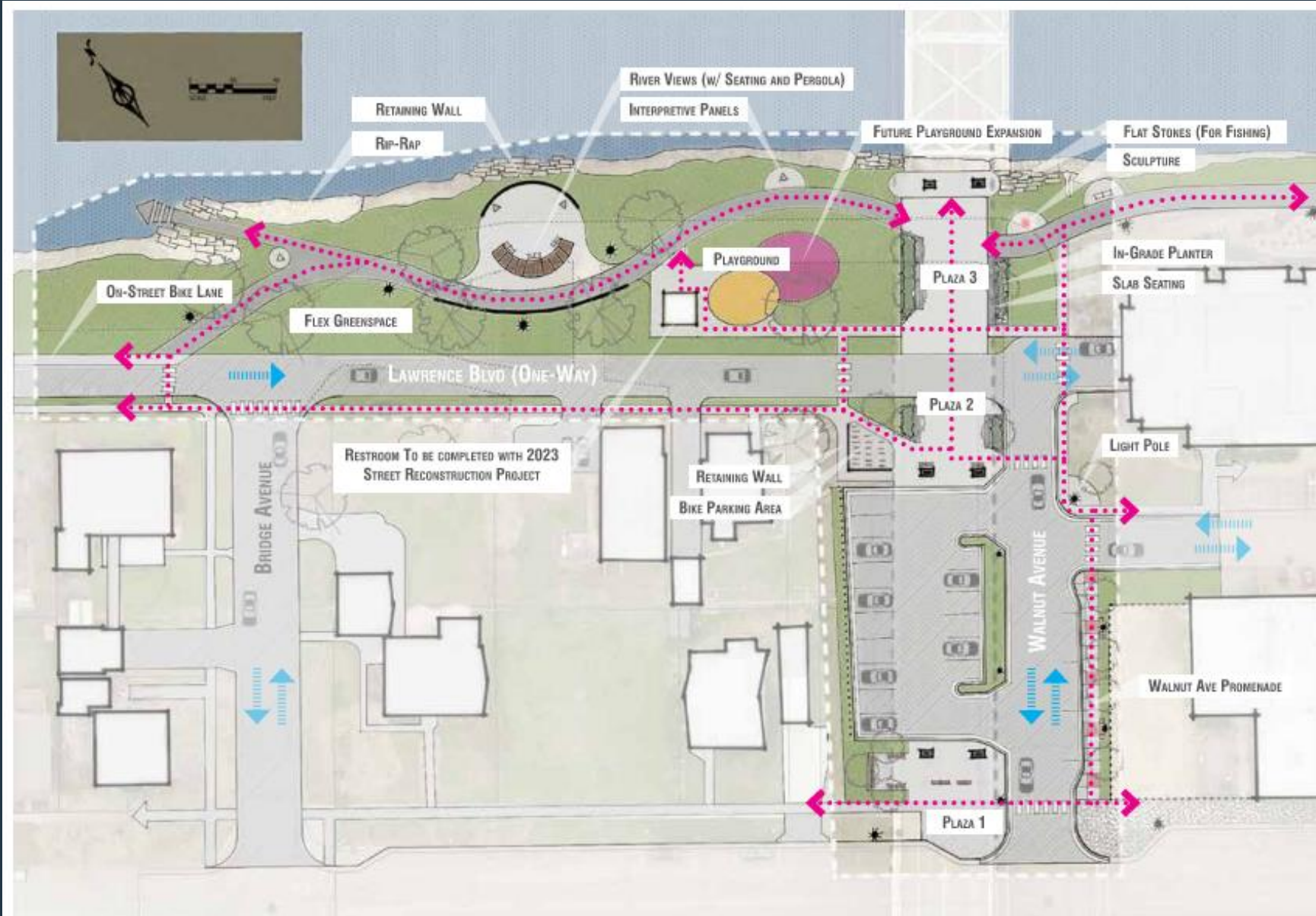
# Opportunity Driven Projects (Unfunded Project Elements)

# Monument Signage



- Replacement of Existing Signage on Highway 61 & Highway 60 Bridge Crossing
- Locations & design to be refined at time of implementation
- Consideration of location and scale

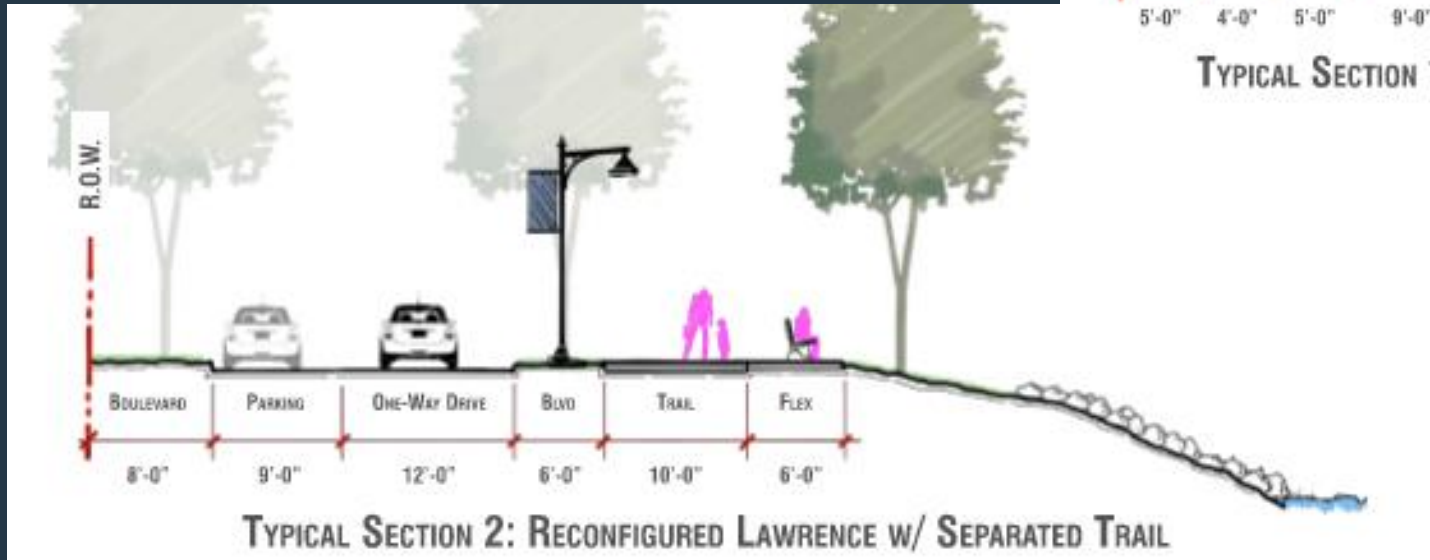
# Riverfront Plaza



- Long term vision for downtown riverfront.
- Concept explores the realignment of Lawrence Blvd. to maximize space along the riverfront
- Would require outside funding source for implementation (no money currently budgeted beyond restroom building)

# Lawrence Blvd. Trail

- Long term vision for downtown riverfront.
- Concept explores the reconfiguration of Lawrence Blvd. to maximize space along the riverfront
- Would require outside funding source for implementation (no money currently budgeted)



# Next Steps

---

- **Tonight** - Adoption of Downtown Streetscape Plan Document
- **Funded Elements** – Incorporated into construction plans and implemented with Street & Utility Reconstruction Project
- **Unfunded Elements** – Solicit grants/funding for unfunded/opportunity driven projects



---

**Questions?**