

4TH GRANT BLVD. WEST

BRIDGE AVENUE

4" CONC. WALK, TYP.

MATCH LINE: SEE SHEET L1.01

CITY OF WABASHA
329 3RD ST W
R27.00386.00

PLANTING LEGEND

- PERENNIAL AND SHRUB GROUPINGS
- OVERSTORY TREE

FURNISHINGS LEGEND

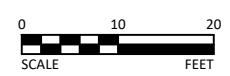
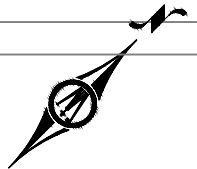
- BENCH
- WASTE RECEPTACLE
- TREE GRATE & FRAME

HATCH LEGEND

- PLAIN CONCRETE
- RED COLORED CONCRETE
- CHARCOAL COLORED CONCRETE

LIGHTING/ELECTRICAL (SEE E SHEETS)

- RECEPTACLE STANCHION
- LIGHTING UNIT TYPE 1
- LIGHTING UNIT TYPE 2
- LIGHTING UNIT TYPE 3



I HEREBY CERTIFY THAT THIS PLAN, SPECIFICATION, OR REPORT WAS PREPARED BY ME OR UNDER MY DIRECT SUPERVISION AND THAT I AM A DULY LICENSED LANDSCAPE ARCHITECT UNDER THE LAWS OF THE STATE OF MINNESOTA.

NOT FOR CONSTRUCTION

JONATHAN D. NELSEN
LIC. NO. 53433 DATE MM/DD/YYYY

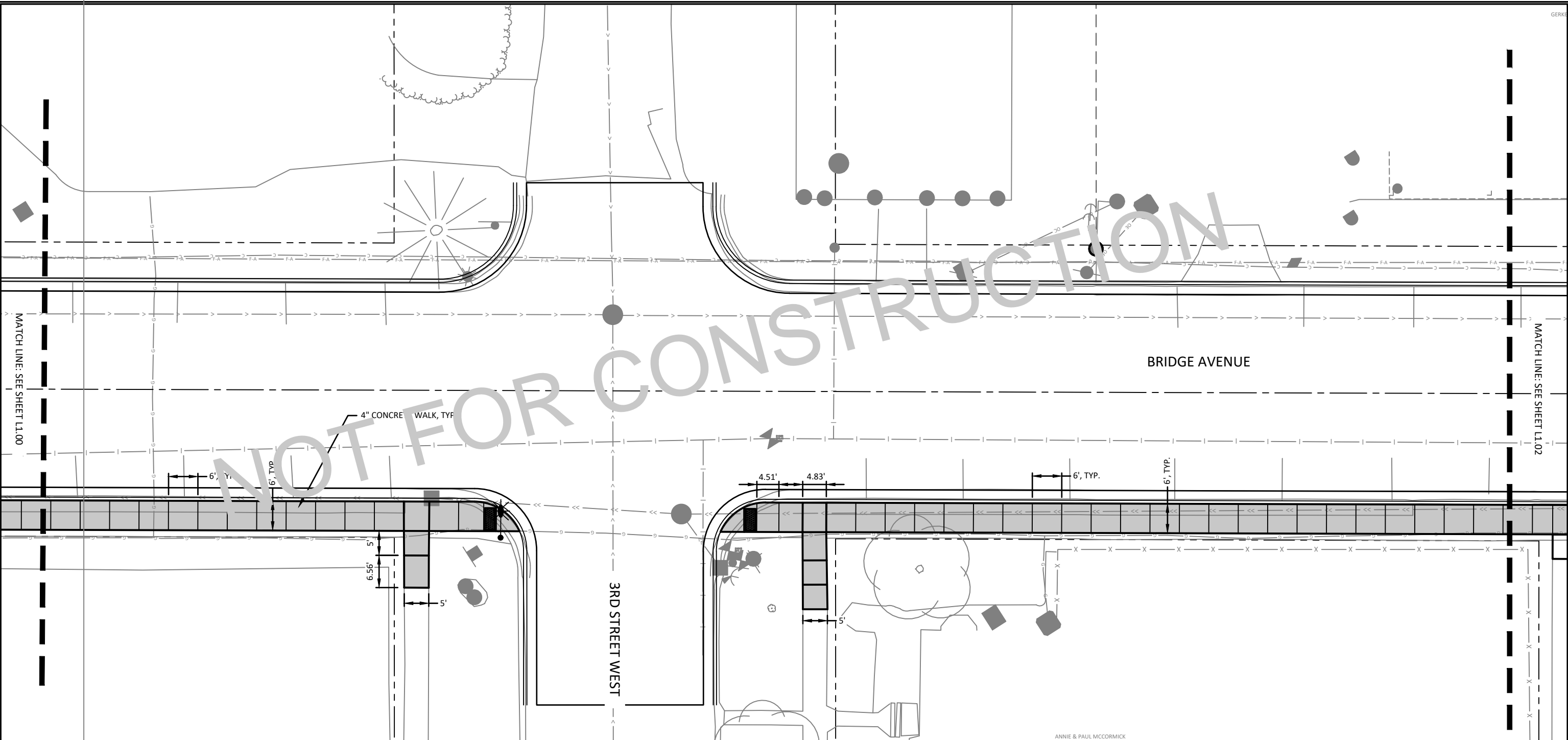


2900 43RD STREET NW, SUITE 100
ROCHESTER, MINNESOTA 55901
Phone: (507) 208-4332
Email: Rochester@bolton-menk.com
www.bolton-menk.com

DESIGNED	NO.	ISSUED FOR	DATE
JDN, CRT			
DRAWN			
CRT			
CHECKED			
JDN			
CLIENT PROJ. NO.			
H19-120756			

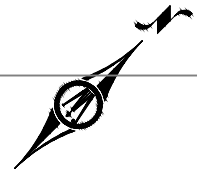
CITY OF WABASHA, MINNESOTA
2023 STREET & UTILITY IMPROVEMENTS SAP 079-658-004 & 079-665-002
STREETSCAPE PLANS

SHEET
L1.00

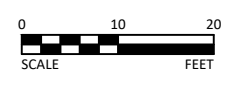


NOT FOR CONSTRUCTION

PLANTING LEGEND	FURNISHINGS LEGEND	HATCH LEGEND	LIGHTING/ELECTRICAL (SEE E SHEETS)
PERENNIAL AND SHRUB GROUPINGS	BENCH	PLAIN CONCRETE	RECEPTACLE STANCHION
OVERSTORY TREE	WASTE RECEPTACLE	RED COLORED CONCRETE	LIGHTING UNIT TYPE 1
	TREE GRATE & FRAME	CHARCOAL COLORED CONCRETE	LIGHTING UNIT TYPE 2
			LIGHTING UNIT TYPE 3



© Bolton & Menk, Inc. 2023. All Rights Reserved. WABASHA ST. UTILITY IMPROVEMENTS L1.00.dwg 4/14/2023 10:28:04 AM



I HEREBY CERTIFY THAT THIS PLAN, SPECIFICATION, OR REPORT WAS PREPARED BY ME OR UNDER MY DIRECT SUPERVISION AND THAT I AM A DULY LICENSED LANDSCAPE ARCHITECT UNDER THE LAWS OF THE STATE OF MINNESOTA.

NOT FOR CONSTRUCTION

JONATHAN D. NELSEN
 LIC. NO. 53433 DATE MM/DD/YYYY

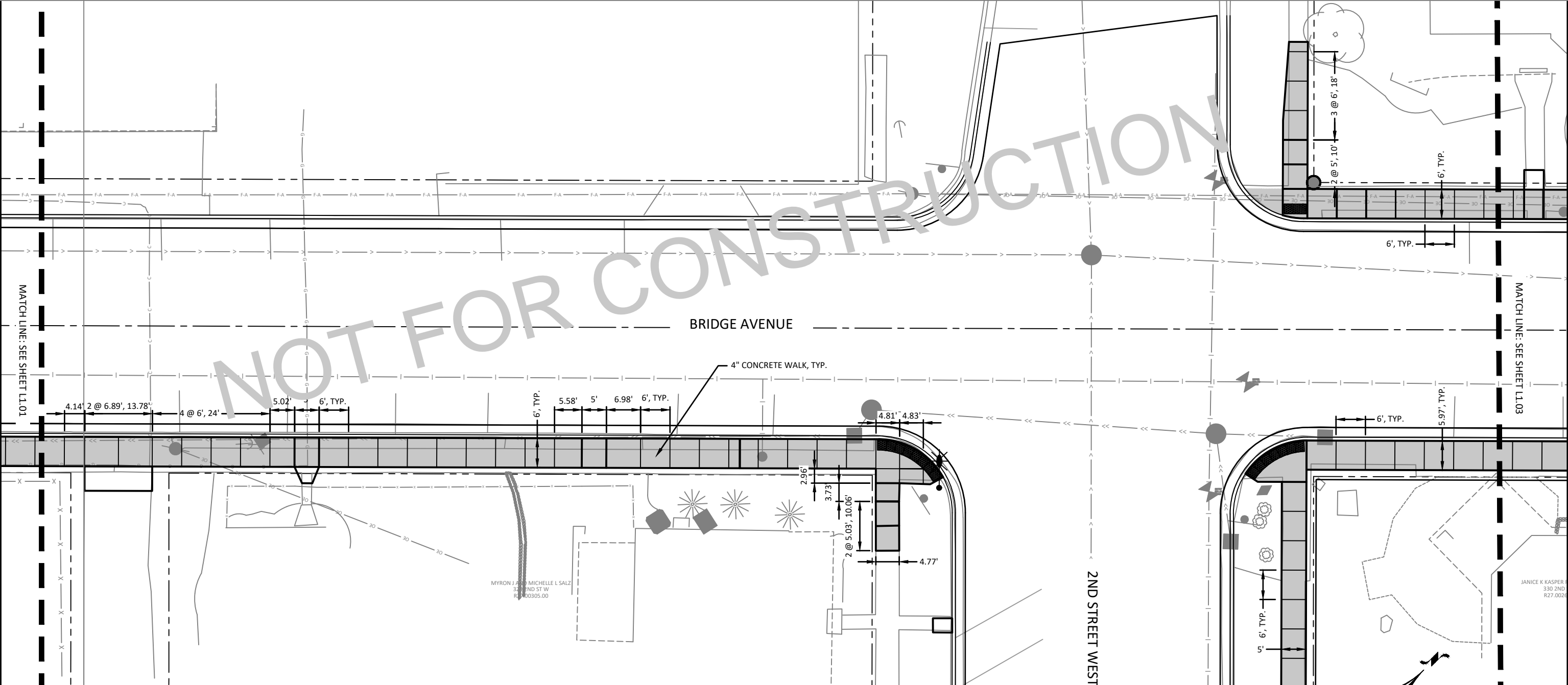


2900 43RD STREET NW, SUITE 100
 ROCHESTER, MINNESOTA 55901
 Phone: (507) 208-4332
 Email: Rochester@bolton-menk.com
 www.bolton-menk.com

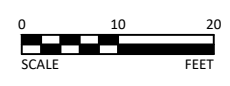
DESIGNED	NO.	ISSUED FOR	DATE
JDN, CRT			
CRT			
CHECKED			
JDN			
CLIENT PROJ. NO.			
H19-120756			

CITY OF WABASHA, MINNESOTA
 2023 STREET & UTILITY IMPROVEMENTS SAP 079-658-004 & 079-665-002
 STREETScape PLANS

NOT FOR CONSTRUCTION



PLANTING LEGEND	FURNISHINGS LEGEND	HATCH LEGEND	LIGHTING/ELECTRICAL (SEE E SHEETS)
PERENNIAL AND SHRUB GROUPINGS	BENCH	PLAIN CONCRETE	RECEPTACLE STANCHION
OVERSTORY TREE	WASTE RECEPTACLE	RED COLORED CONCRETE	LIGHTING UNIT TYPE 1
	TREE GRATE & FRAME	CHARCOAL COLORED CONCRETE	LIGHTING UNIT TYPE 2
			LIGHTING UNIT TYPE 3



I HEREBY CERTIFY THAT THIS PLAN, SPECIFICATION, OR REPORT WAS PREPARED BY ME OR UNDER MY DIRECT SUPERVISION AND THAT I AM A DULY LICENSED LANDSCAPE ARCHITECT UNDER THE LAWS OF THE STATE OF MINNESOTA.

NOT FOR CONSTRUCTION

JONATHAN D. NELSEN
LIC. NO. 53433 DATE MM/DD/YYYY



2900 43RD STREET NW, SUITE 100
ROCHESTER, MINNESOTA 55901
Phone: (507) 208-4332
Email: Rochester@bolton-menk.com
www.bolton-menk.com

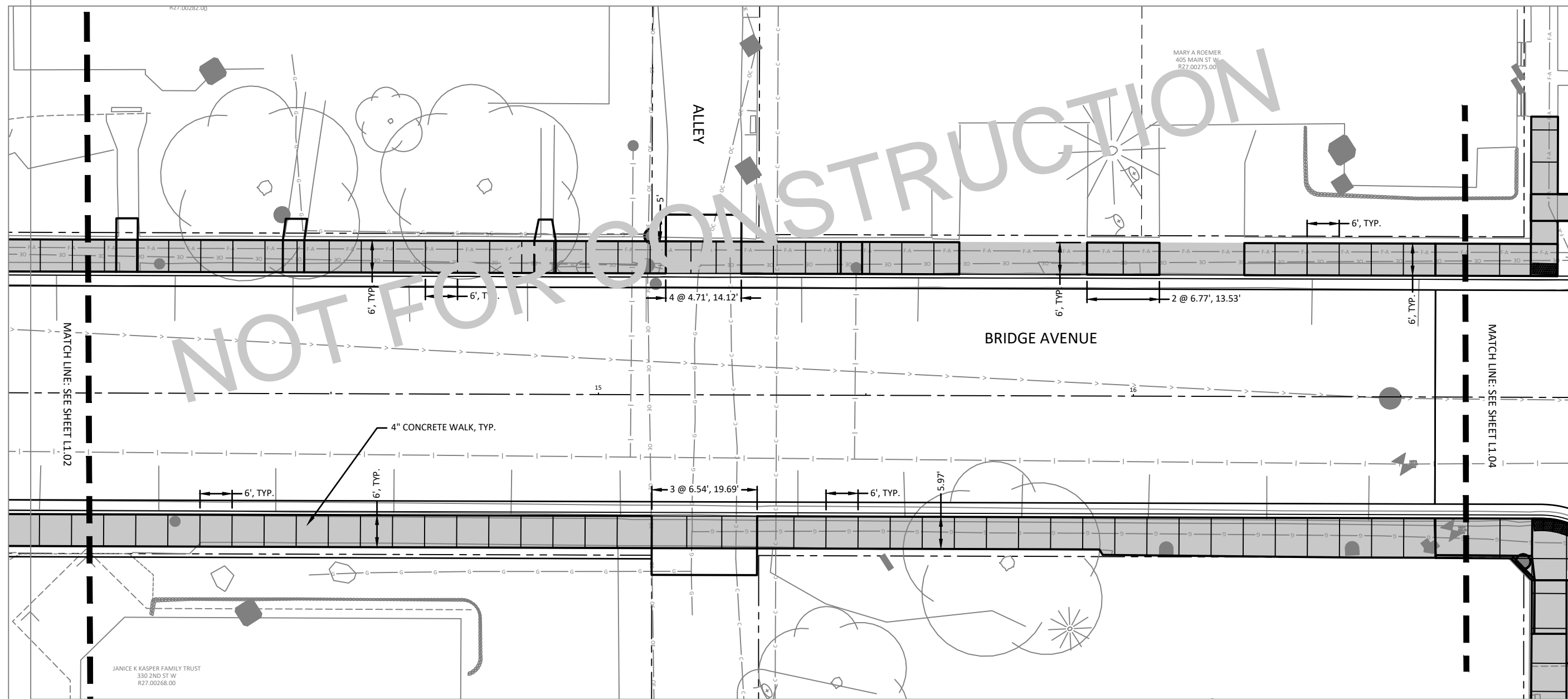
DESIGNED	DRAWN	CHECKED	CLIENT PROJ. NO.
JDN, CRT	CRT	JDN	H19-120756

CITY OF WABASHA, MINNESOTA
2023 STREET & UTILITY IMPROVEMENTS SAP 079-658-004 & 079-665-002
STREETSCAPE PLANS

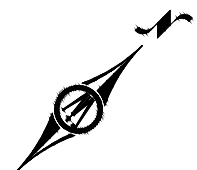
SHEET
L1.02

© Bolton & Menk, Inc. 2023. All Rights Reserved. WABASHA, MN. 2023-07-20. 10:28:05 AM

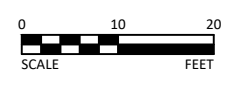
NOT FOR CONSTRUCTION



PLANTING LEGEND	FURNISHINGS LEGEND	HATCH LEGEND	LIGHTING/ELECTRICAL (SEE E SHEETS)
PERENNIAL AND SHRUB GROUPINGS	BENCH	PLAIN CONCRETE	RECEPTACLE STANCHION
OVERSTORY TREE	WASTE RECEPTACLE	RED COLORED CONCRETE	LIGHTING UNIT TYPE 1
	TREE GRATE & FRAME	CHARCOAL COLORED CONCRETE	LIGHTING UNIT TYPE 2
			LIGHTING UNIT TYPE 3



© Bolton & Menk, Inc. 2023. All Rights Reserved. 4/14/2023 10:28:08 AM



I HEREBY CERTIFY THAT THIS PLAN, SPECIFICATION, OR REPORT WAS PREPARED BY ME OR UNDER MY DIRECT SUPERVISION AND THAT I AM A DULY LICENSED LANDSCAPE ARCHITECT UNDER THE LAWS OF THE STATE OF MINNESOTA.

NOT FOR CONSTRUCTION

JONATHAN D. NELSEN
 LIC. NO. 53433 DATE MM/DD/YYYY

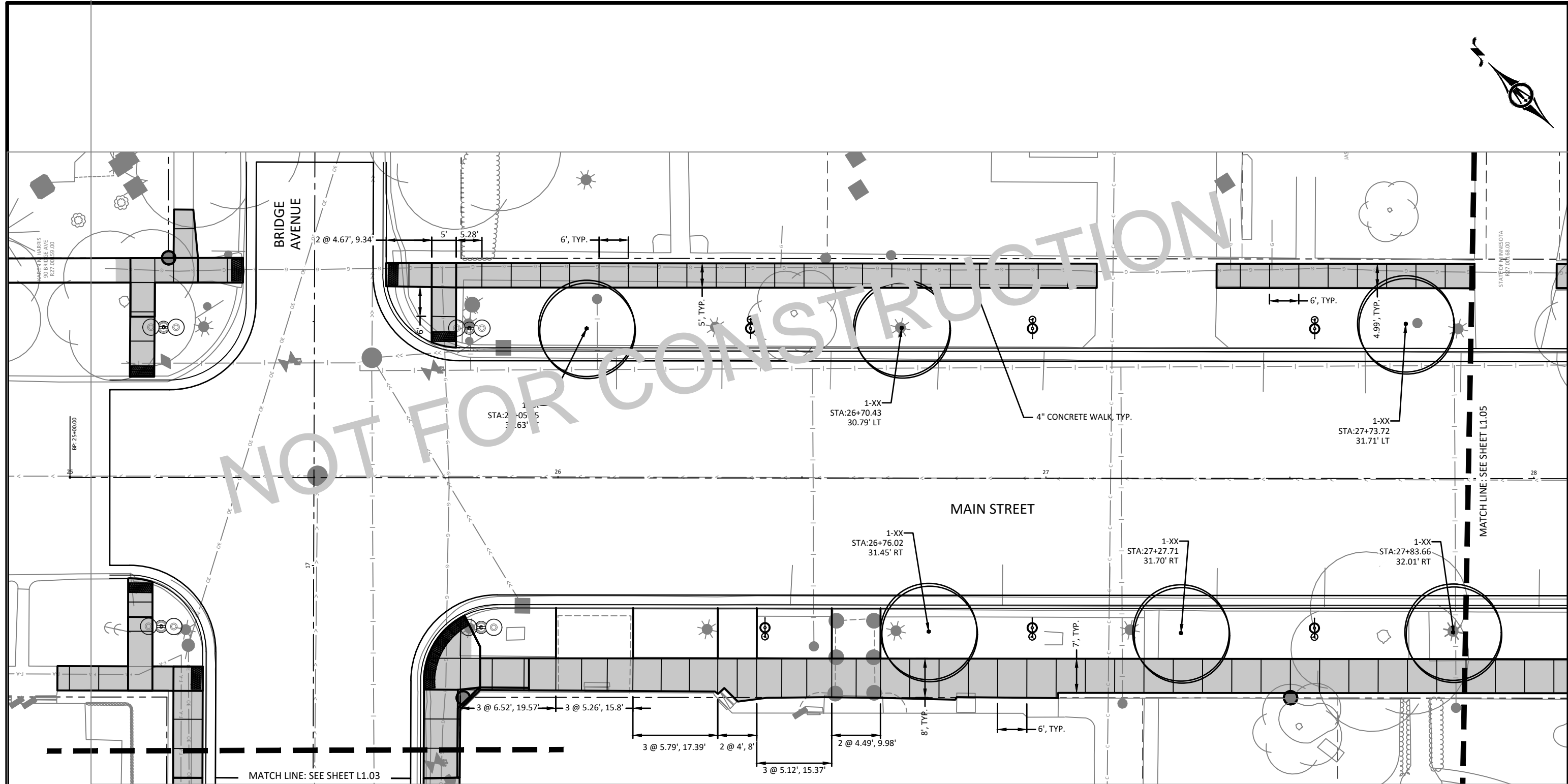


2900 43RD STREET NW, SUITE 100
 ROCHESTER, MINNESOTA 55901
 Phone: (507) 208-4332
 Email: Rochester@bolton-menk.com
 www.bolton-menk.com

DESIGNED	DATE
JDN, CRT	
DRAWN	DATE
CRT	
CHECKED	DATE
JDN	
CLIENT PROJ. NO.	DATE
H19-120756	

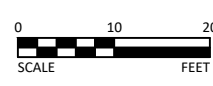
CITY OF WABASHA, MINNESOTA
 2023 STREET & UTILITY IMPROVEMENTS SAP 079-658-004 & 079-665-002
 STREETScape PLANS

SHEET
L1.03



NOT FOR CONSTRUCTION

PLANTING LEGEND	FURNISHINGS LEGEND	HATCH LEGEND	LIGHTING/ELECTRICAL (SEE E SHEETS)
PERENNIAL AND SHRUB GROUPINGS OVERSTORY TREE	BENCH WASTE RECEPTACLE TREE GRATE & FRAME	PLAIN CONCRETE RED COLORED CONCRETE CHARCOAL COLORED CONCRETE	RECEPTACLE STANCHION LIGHTING UNIT TYPE 1 LIGHTING UNIT TYPE 2 LIGHTING UNIT TYPE 3



I HEREBY CERTIFY THAT THIS PLAN, SPECIFICATION, OR REPORT WAS PREPARED BY ME OR UNDER MY DIRECT SUPERVISION AND THAT I AM A DULY LICENSED LANDSCAPE ARCHITECT UNDER THE LAWS OF THE STATE OF MINNESOTA.

NOT FOR CONSTRUCTION

JONATHAN D. NELSEN
 LIC. NO. 53433 DATE MM/DD/YYYY



2900 43RD STREET NW, SUITE 100
 ROCHESTER, MINNESOTA 55901
 Phone: (507) 208-4332
 Email: Rochester@bolton-menk.com
 www.bolton-menk.com

DESIGNED	DRAWN	CHECKED	CLIENT PROJ. NO.
JDN, CRT	CRT	JDN	H19-120756

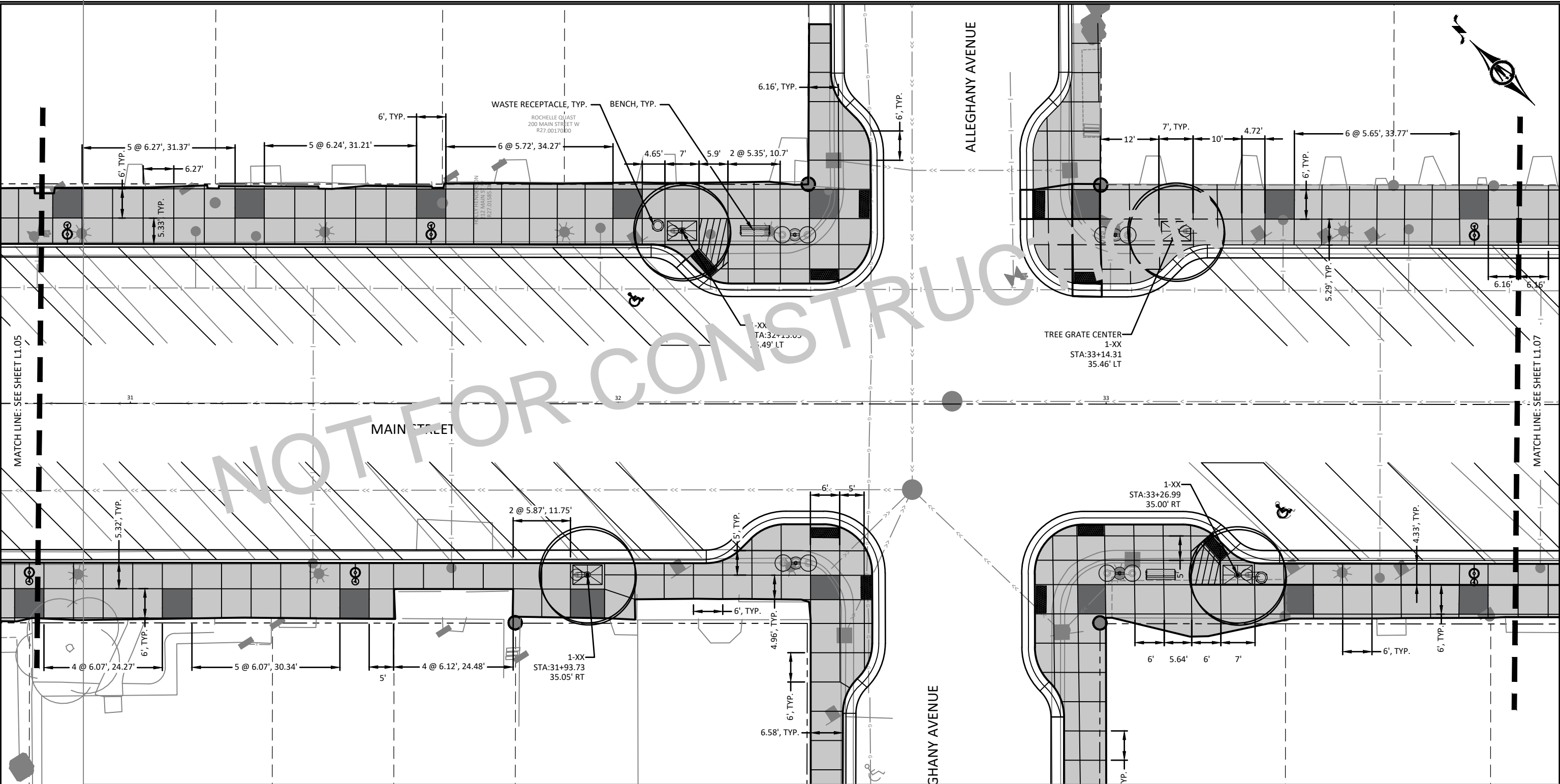
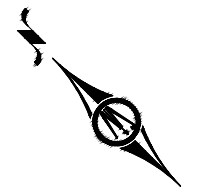
CITY OF WABASHA, MINNESOTA

2023 STREET & UTILITY IMPROVEMENTS SAP 079-658-004 & 079-665-002

STREETScape PLANS

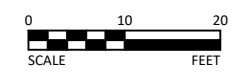
SHEET
L1.04

© Bolton & Menk, Inc. 2023. All Rights Reserved. WABASHA, MN. 2023-07-25 10:28:10 AM



NOT FOR CONSTRUCTION

PLANTING LEGEND	FURNISHINGS LEGEND	HATCH LEGEND	LIGHTING/ELECTRICAL (SEE E SHEETS)
PERENNIAL AND SHRUB GROUPINGS	BENCH	PLAIN CONCRETE	RECEPTACLE STANCHION
OVERSTORY TREE	WASTE RECEPTACLE	RED COLORED CONCRETE	LIGHTING UNIT TYPE 1
	TREE GRATE & FRAME	CHARCOAL COLORED CONCRETE	LIGHTING UNIT TYPE 2
			LIGHTING UNIT TYPE 3



I HEREBY CERTIFY THAT THIS PLAN, SPECIFICATION, OR REPORT WAS PREPARED BY ME OR UNDER MY DIRECT SUPERVISION AND THAT I AM A DULY LICENSED LANDSCAPE ARCHITECT UNDER THE LAWS OF THE STATE OF MINNESOTA.

NOT FOR CONSTRUCTION

JONATHAN D. NELSEN
LIC. NO. 53433 DATE MM/DD/YYYY



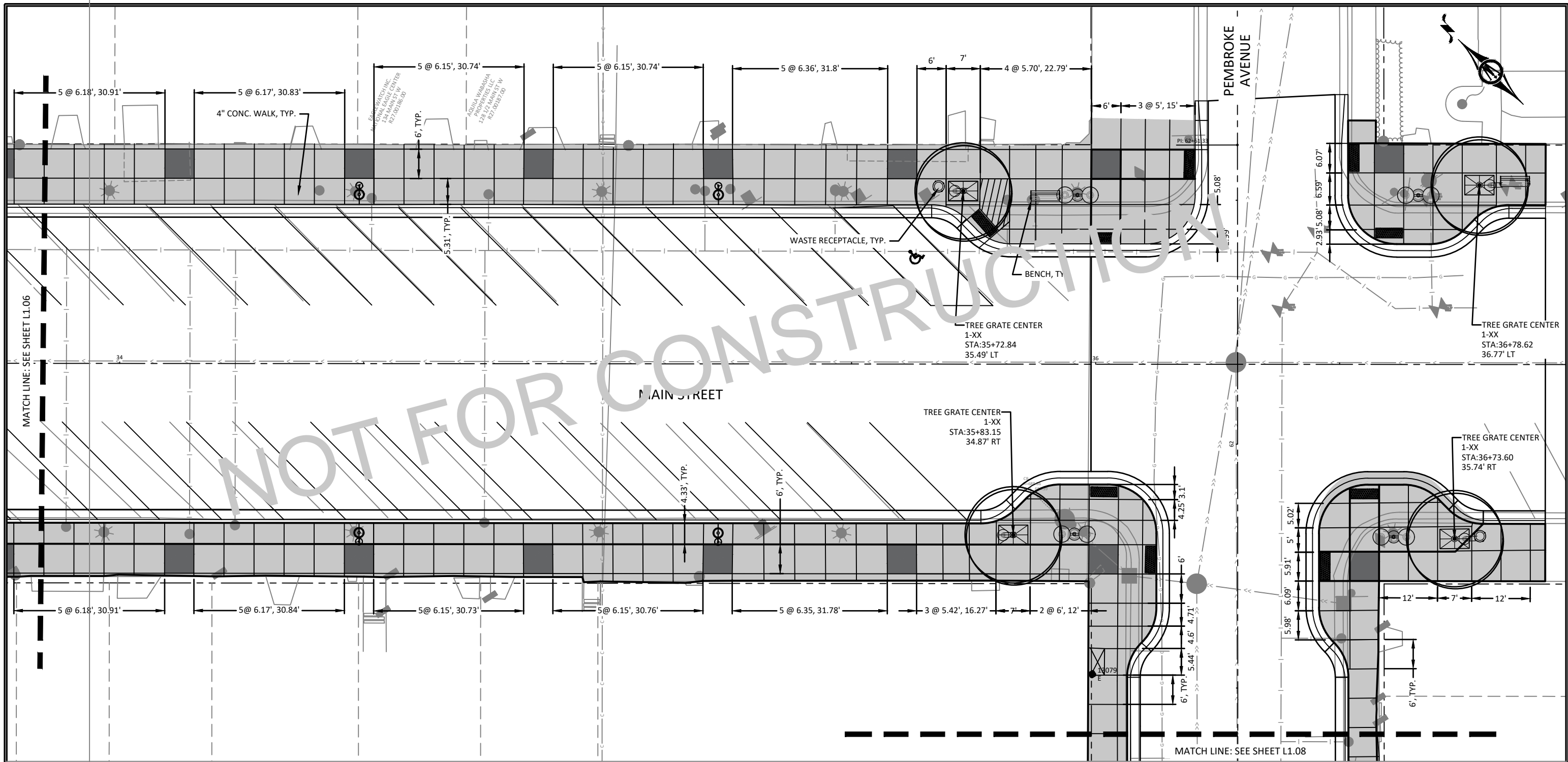
2900 43RD STREET NW, SUITE 100
ROCHESTER, MINNESOTA 55901
Phone: (507) 208-4332
Email: Rochester@bolton-menk.com
www.bolton-menk.com

DESIGNED	DRAWN	CHECKED	CLIENT PROJ. NO.
JDN, CRT	CRT	JDN	H19-120756

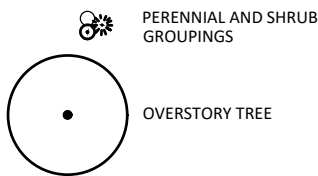
CITY OF WABASHA, MINNESOTA
2023 STREET & UTILITY IMPROVEMENTS SAP 079-658-004 & 079-665-002
STREETSCAPE PLANS

SHEET
L1.06

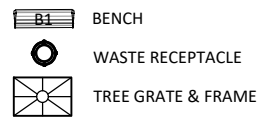
© Bolton & Menk, Inc. 2023. All Rights Reserved. WABASHA, MN. 2023-07-14. 10:28:44 AM



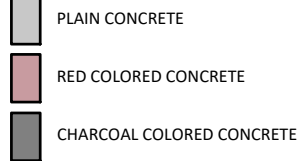
PLANTING LEGEND



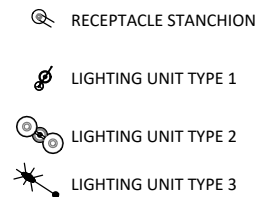
FURNISHINGS LEGEND



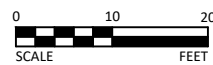
HATCH LEGEND



LIGHTING/ELECTRICAL (SEE E SHEETS)



© Bolton & Menk, Inc. 2023. All Rights Reserved. WABASHA ST. UTILITY IMPROVEMENTS L1.07.dwg 4/14/2023 10:28:16 AM



I HEREBY CERTIFY THAT THIS PLAN, SPECIFICATION, OR REPORT WAS PREPARED BY ME OR UNDER MY DIRECT SUPERVISION AND THAT I AM A DULY LICENSED LANDSCAPE ARCHITECT UNDER THE LAWS OF THE STATE OF MINNESOTA.
NOT FOR CONSTRUCTION
 JONATHAN D. NELSEN
 LIC. NO. 53433 DATE MM/DD/YYYY



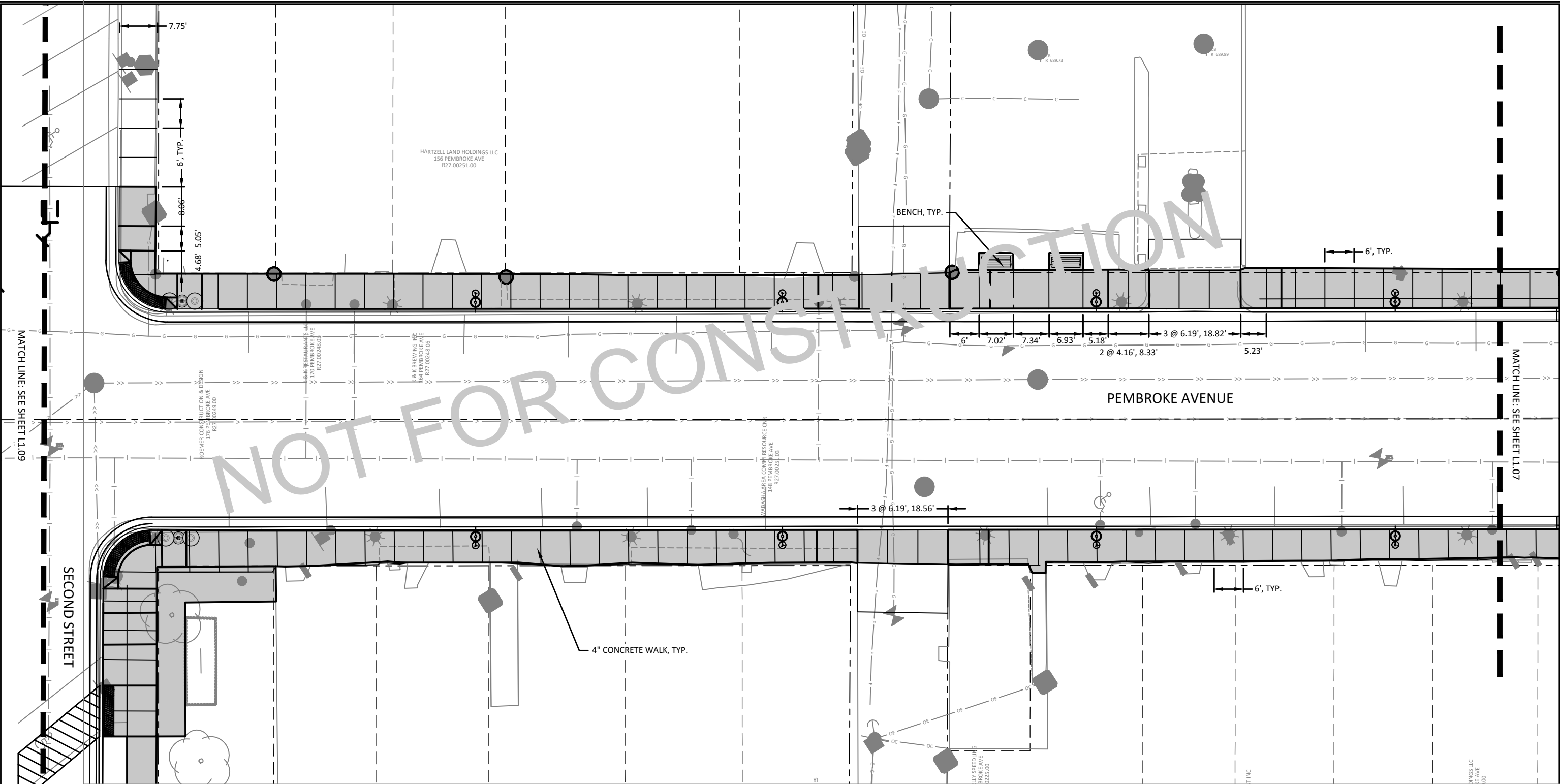
2900 43RD STREET NW, SUITE 100
 ROCHESTER, MINNESOTA 55901
 Phone: (507) 208-4332
 Email: Rochester@bolton-menk.com
 www.bolton-menk.com

DESIGNED	DRAWN	CHECKED	CLIENT PROJ. NO.
JDN, CRT	CRT	JDN	H19-120756

CITY OF WABASHA, MINNESOTA
 2023 STREET & UTILITY IMPROVEMENTS SAP 079-658-004 & 079-665-002
 STREETScape PLANS

SHEET
L1.07

NOT FOR CONSTRUCTION



PLANTING LEGEND	FURNISHINGS LEGEND	HATCH LEGEND	LIGHTING/ELECTRICAL (SEE E SHEETS)
<ul style="list-style-type: none"> PERENNIAL AND SHRUB GROUPINGS OVERSTORY TREE 	<ul style="list-style-type: none"> BENCH WASTE RECEPTACLE TREE GRATE & FRAME 	<ul style="list-style-type: none"> PLAIN CONCRETE RED COLORED CONCRETE CHARCOAL COLORED CONCRETE 	<ul style="list-style-type: none"> RECEPTACLE STANCHION LIGHTING UNIT TYPE 1 LIGHTING UNIT TYPE 2 LIGHTING UNIT TYPE 3



I HEREBY CERTIFY THAT THIS PLAN, SPECIFICATION, OR REPORT WAS PREPARED BY ME OR UNDER MY DIRECT SUPERVISION AND THAT I AM A DULY LICENSED LANDSCAPE ARCHITECT UNDER THE LAWS OF THE STATE OF MINNESOTA.

NOT FOR CONSTRUCTION

JONATHAN D. NELSEN
 LIC. NO. 53433 DATE MM/DD/YYYY



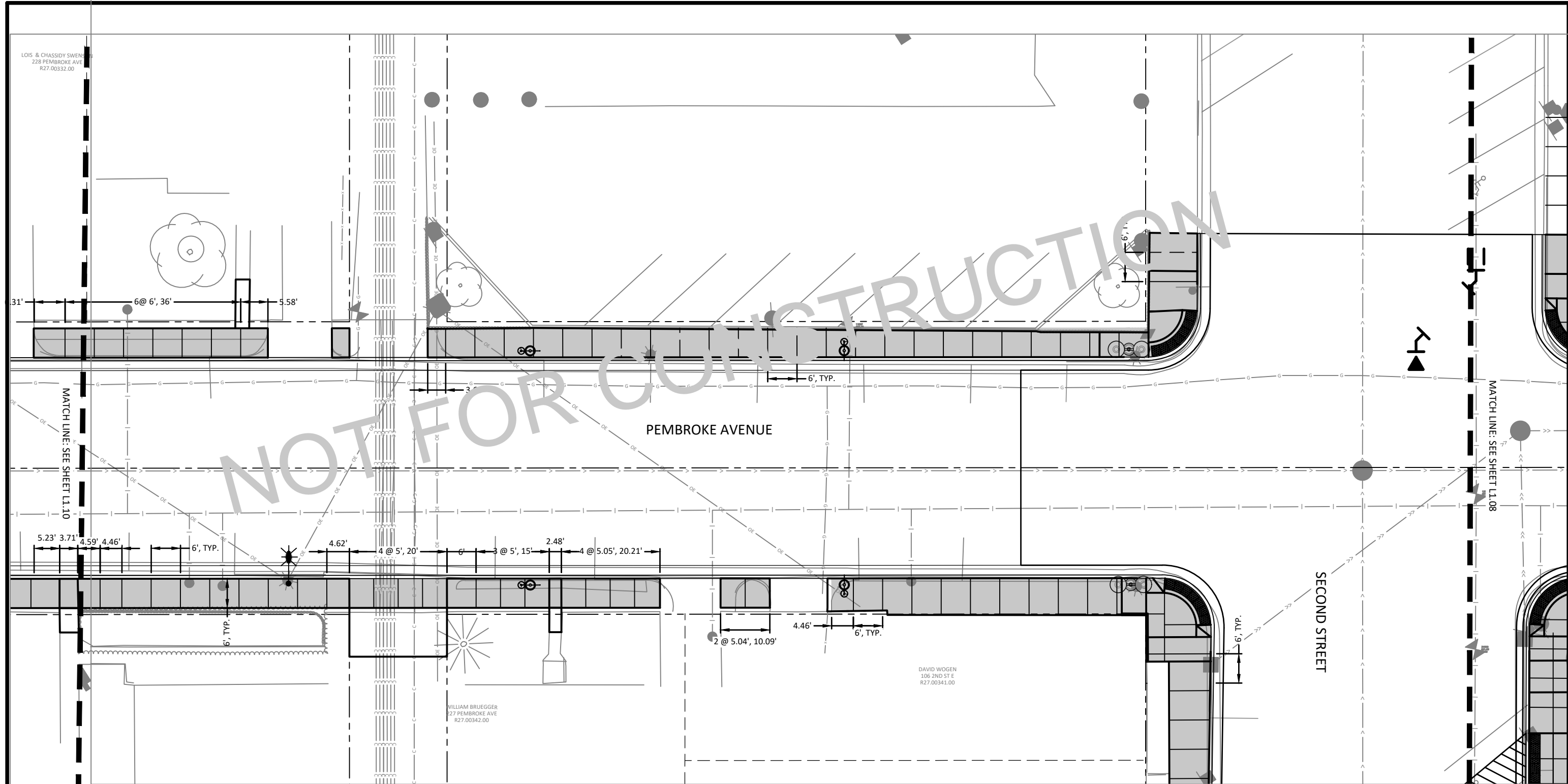
2900 43RD STREET NW, SUITE 100
 ROCHESTER, MINNESOTA 55901
 Phone: (507) 208-4332
 Email: Rochester@bolton-menk.com
 www.bolton-menk.com

DESIGNED	JDN, CRT
DRAWN	CRT
CHECKED	JDN
CLIENT PROJ. NO.	H19-120756

CITY OF WABASHA, MINNESOTA
 2023 STREET & UTILITY IMPROVEMENTS SAP 079-658-004 & 079-665-002
 STREETScape PLANS

SHEET
L1.08

© Bolton & Menk, Inc. 2023. All Rights Reserved. WABASHA, MN. 4/16/2023 10:28:18 AM



PLANTING LEGEND	FURNISHINGS LEGEND	HATCH LEGEND	LIGHTING/ELECTRICAL (SEE E SHEETS)
PERENNIAL AND SHRUB GROUPINGS	BENCH	PLAIN CONCRETE	RECEPTACLE STANCHION
OVERSTORY TREE	WASTE RECEPTACLE	RED COLORED CONCRETE	LIGHTING UNIT TYPE 1
	TREE GRATE & FRAME	CHARCOAL COLORED CONCRETE	LIGHTING UNIT TYPE 2
			LIGHTING UNIT TYPE 3

© Bolton & Menk, Inc. 2023. All Rights Reserved. WABASHA - 2023-07-26 10:28:20 AM

SCALE FEET

I HEREBY CERTIFY THAT THIS PLAN, SPECIFICATION, OR REPORT WAS PREPARED BY ME OR UNDER MY DIRECT SUPERVISION AND THAT I AM A DULY LICENSED LANDSCAPE ARCHITECT UNDER THE LAWS OF THE STATE OF MINNESOTA.

NOT FOR CONSTRUCTION

JONATHAN D. NELSEN
LIC. NO. 53433 DATE MM/DD/YYYY

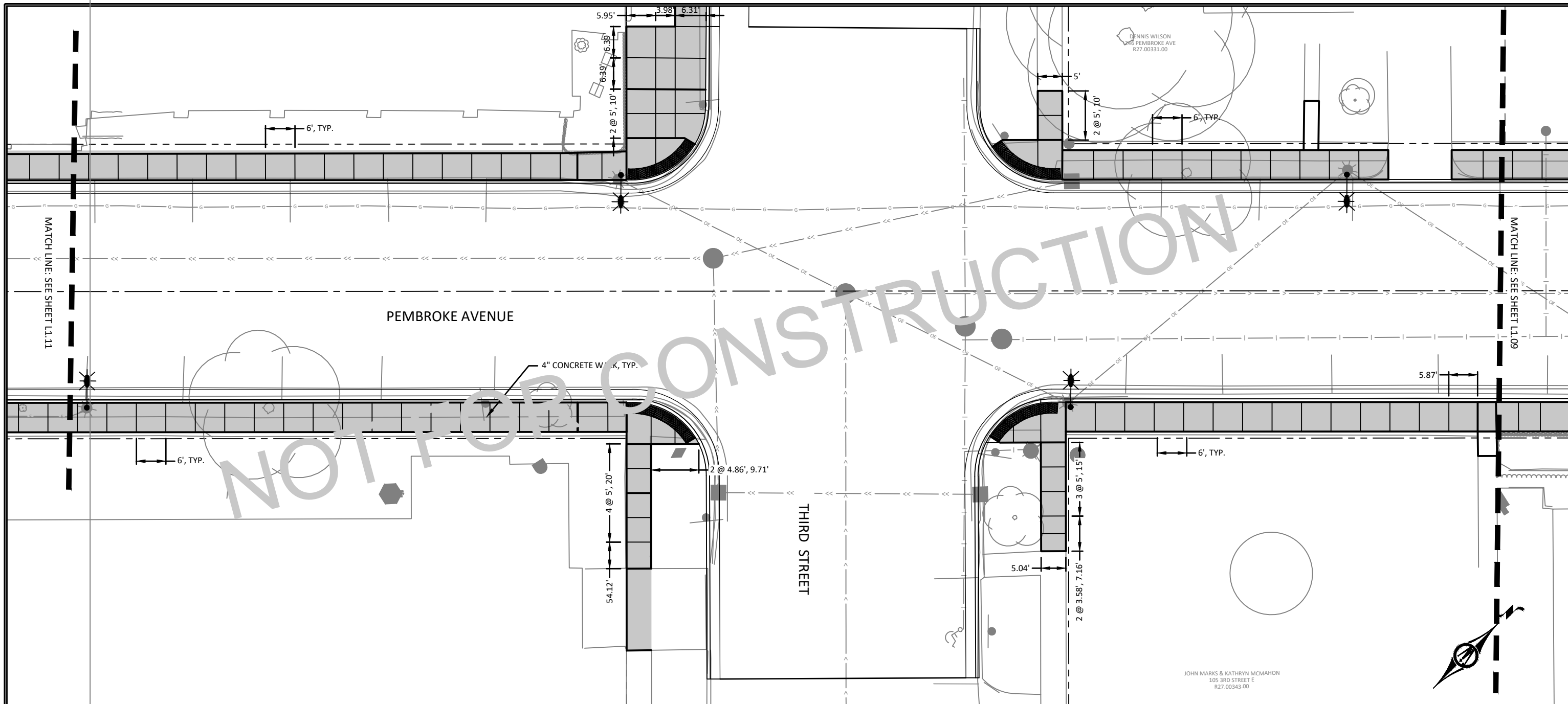


2900 43RD STREET NW, SUITE 100
ROCHESTER, MINNESOTA 55901
Phone: (507) 208-4332
Email: Rochester@bolton-menk.com
www.bolton-menk.com

DESIGNED	DRAWN	CHECKED	CLIENT PROJ. NO.
JDN, CRT	CRT	JDN	H19-120756

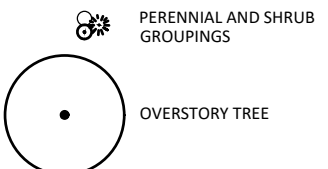
CITY OF WABASHA, MINNESOTA
2023 STREET & UTILITY IMPROVEMENTS SAP 079-658-004 & 079-665-002
STREETScape PLANS

SHEET
L1.09

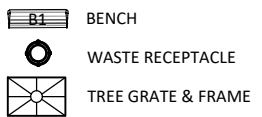


NOT FOR CONSTRUCTION

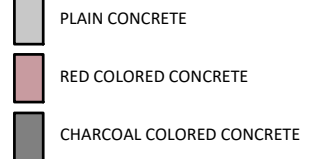
PLANTING LEGEND



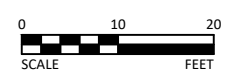
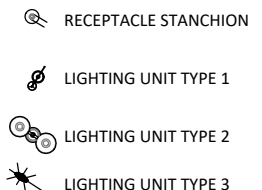
FURNISHINGS LEGEND



HATCH LEGEND



LIGHTING/ELECTRICAL (SEE E SHEETS)



I HEREBY CERTIFY THAT THIS PLAN, SPECIFICATION, OR REPORT WAS PREPARED BY ME OR UNDER MY DIRECT SUPERVISION AND THAT I AM A DULY LICENSED LANDSCAPE ARCHITECT UNDER THE LAWS OF THE STATE OF MINNESOTA.

NOT FOR CONSTRUCTION

JONATHAN D. NELSEN
 LIC. NO. 53433 DATE MM/DD/YYYY



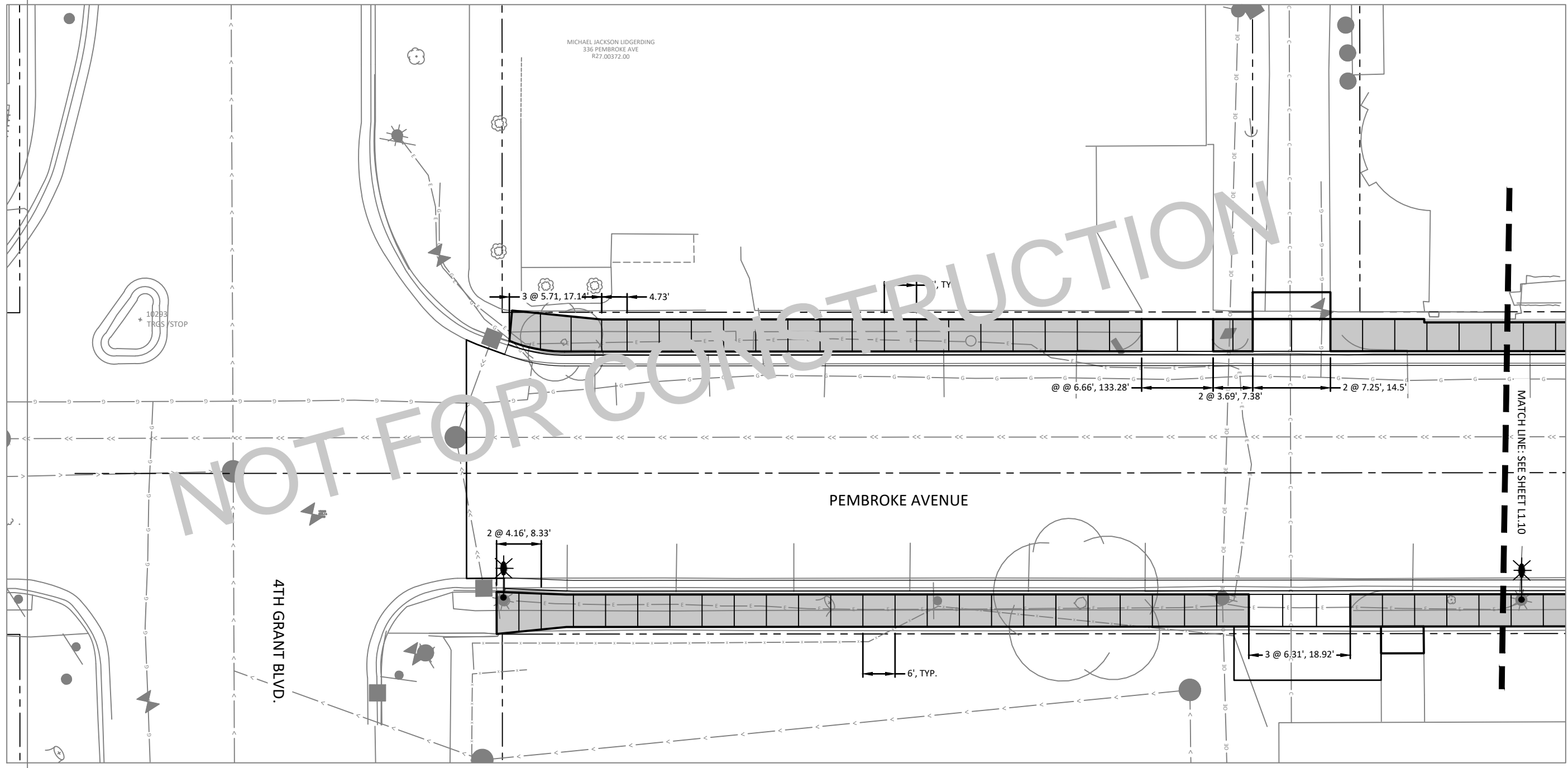
2900 43RD STREET NW, SUITE 100
 ROCHESTER, MINNESOTA 55901
 Phone: (507) 208-4332
 Email: Rochester@bolton-menk.com
 www.bolton-menk.com

DESIGNED	DRAWN	CHECKED	CLIENT PROJ. NO.
JDN, CRT	CRT	JDN	H19-120756

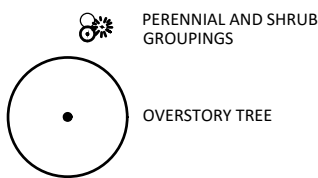
CITY OF WABASHA, MINNESOTA
 2023 STREET & UTILITY IMPROVEMENTS SAP 079-658-004 & 079-665-002
 STREETScape PLANS

SHEET
L1.10

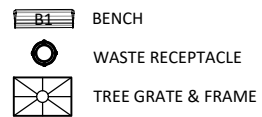
© Bolton & Menk, Inc. 2023. All Rights Reserved. WABASHA, MN. 4/14/2023 10:28:22 AM



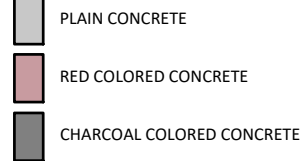
PLANTING LEGEND



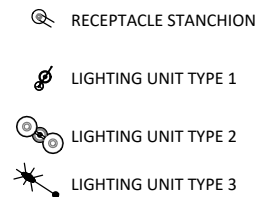
FURNISHINGS LEGEND



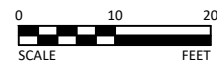
HATCH LEGEND



LIGHTING/ELECTRICAL (SEE E SHEETS)



© Bolton & Menk, Inc. 2023. All Rights Reserved. 4/14/2023 10:28:24 AM



I HEREBY CERTIFY THAT THIS PLAN, SPECIFICATION, OR REPORT WAS PREPARED BY ME OR UNDER MY DIRECT SUPERVISION AND THAT I AM A DULY LICENSED LANDSCAPE ARCHITECT UNDER THE LAWS OF THE STATE OF MINNESOTA.

NOT FOR CONSTRUCTION

JONATHAN D. NELSEN
LIC. NO. 53433 DATE MM/DD/YYYY



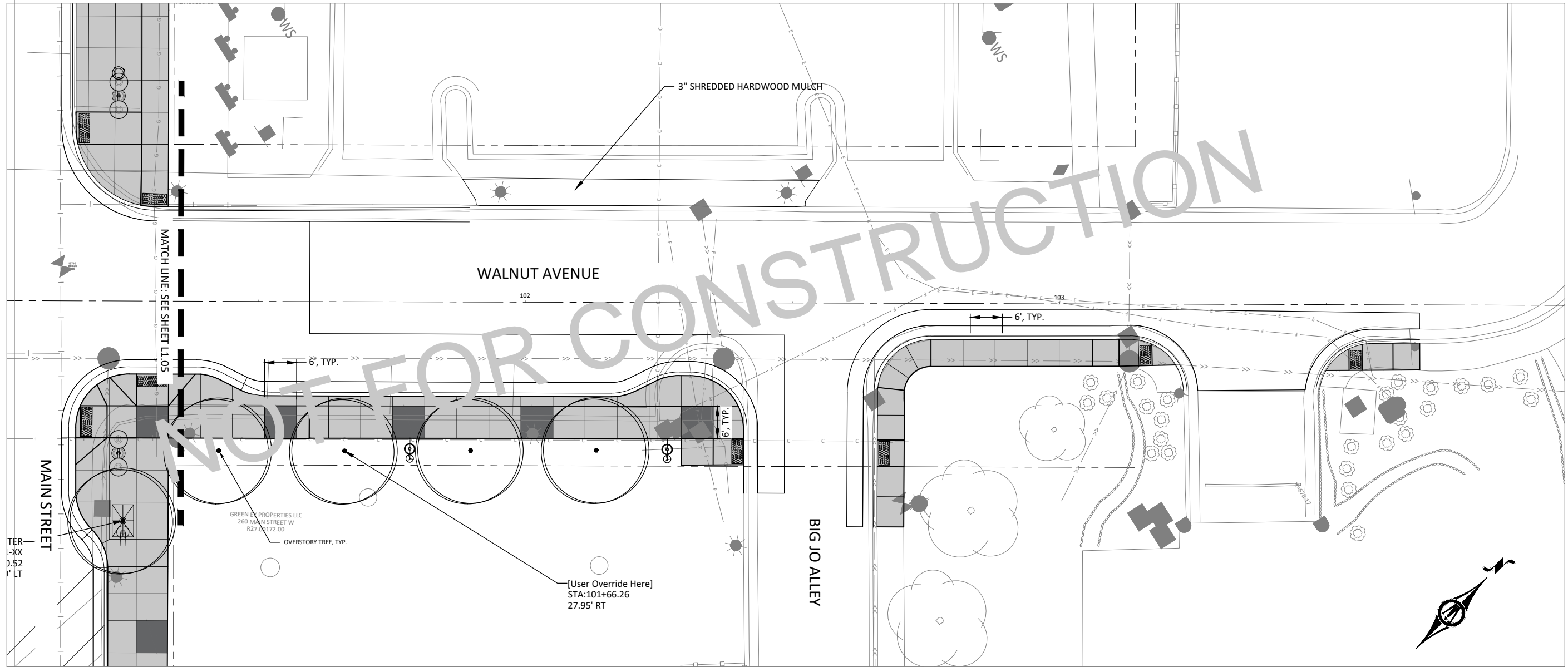
2900 43RD STREET NW, SUITE 100
ROCHESTER, MINNESOTA 55901
Phone: (507) 208-4332
Email: Rochester@bolton-menk.com
www.bolton-menk.com

DESIGNED	DATE
JDN, CRT	
DRAWN	CRT
CHECKED	JDN
CLIENT PROJ. NO.	H19-120756

CITY OF WABASHA, MINNESOTA
2023 STREET & UTILITY IMPROVEMENTS SAP 079-658-004 & 079-665-002
STREETScape PLANS

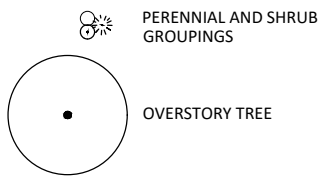


SHEET
L1.11



NOT FOR CONSTRUCTION

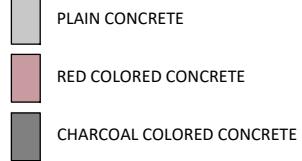
PLANTING LEGEND



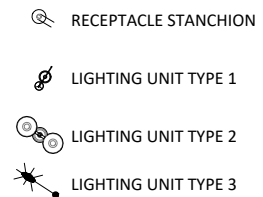
FURNISHINGS LEGEND



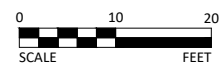
HATCH LEGEND



LIGHTING/ELECTRICAL (SEE E SHEETS)



© Bolton & Menk, Inc. 2023. All Rights Reserved. WABASHA_C:\WORK\2023\CAD\2023\20230510.DWG 4/14/2023 10:28:26 AM



I HEREBY CERTIFY THAT THIS PLAN, SPECIFICATION, OR REPORT WAS PREPARED BY ME OR UNDER MY DIRECT SUPERVISION AND THAT I AM A DULY LICENSED LANDSCAPE ARCHITECT UNDER THE LAWS OF THE STATE OF MINNESOTA.
NOT FOR CONSTRUCTION
 JONATHAN D. NELSEN
 LIC. NO. 53433 DATE MM/DD/YYYY

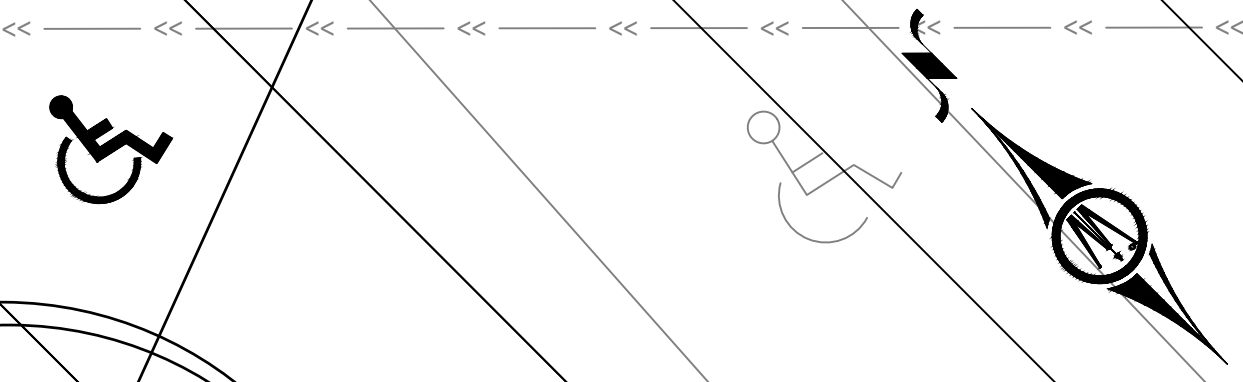
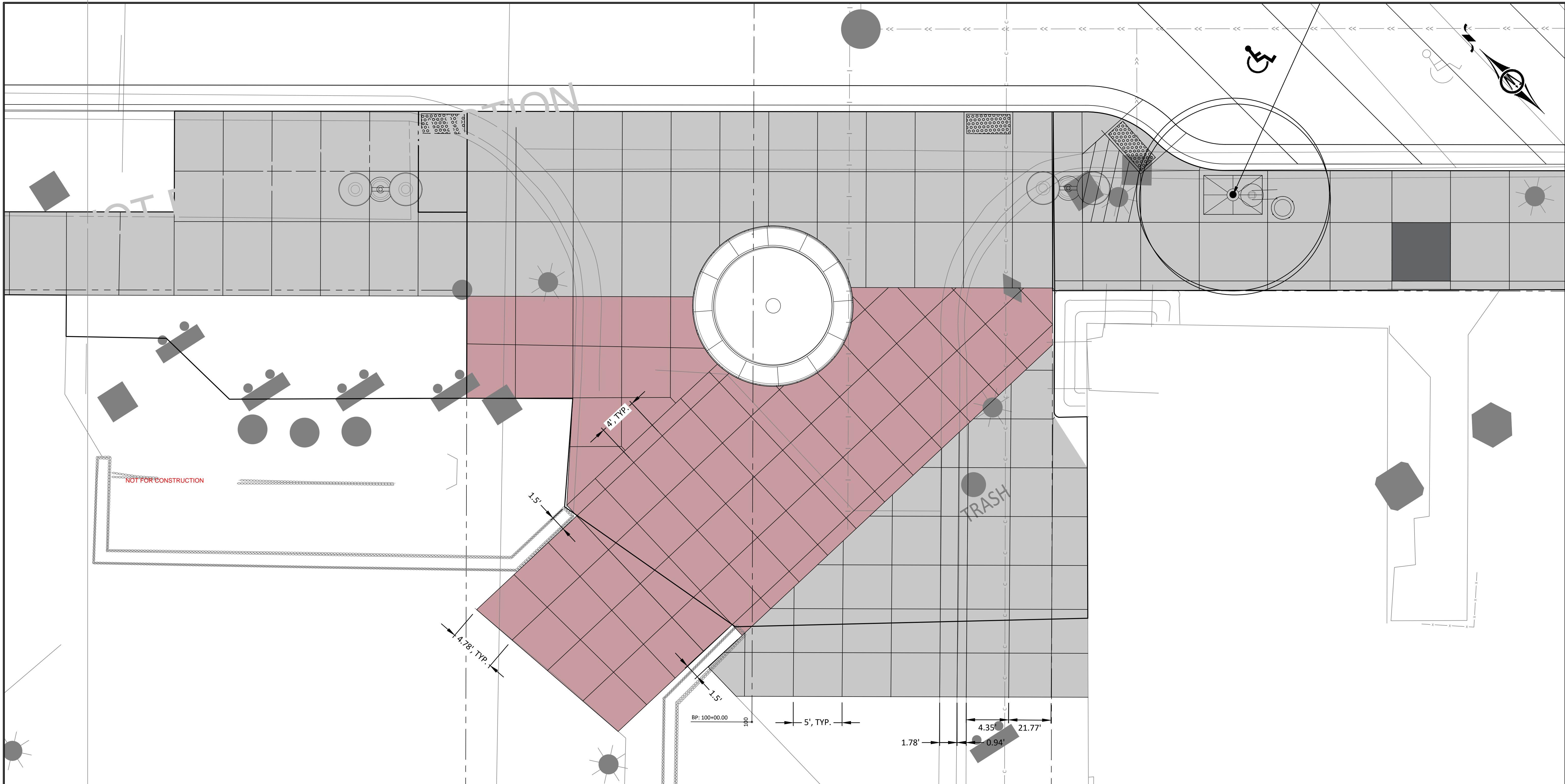


2900 43RD STREET NW, SUITE 100
 ROCHESTER, MINNESOTA 55901
 Phone: (507) 208-4332
 Email: Rochester@bolton-menk.com
 www.bolton-menk.com

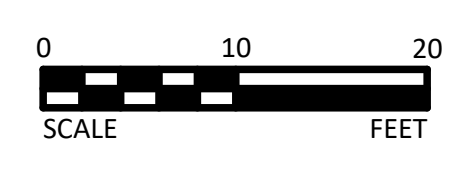
DESIGNED	NO.	ISSUED FOR	DATE
JDN, CRT			
DRAWN			
CRT			
CHECKED			
JDN			
CLIENT PROJ. NO.			
H19.120756			

CITY OF WABASHA, MINNESOTA
 2023 STREET & UTILITY IMPROVEMENTS SAP 079-658-004 & 079-665-002
 STREETScape PLANS

SHEET
L1.12



PLANTING LEGEND	FURNISHINGS LEGEND	HATCH LEGEND	LIGHTING/ELECTRICAL (SEE E SHEETS)
PERENNIAL AND SHRUB GROUPINGS	BENCH	PLAIN CONCRETE	RECEPTACLE STANCHION
OVERSTORY TREE	WASTE RECEPTACLE	RED COLORED CONCRETE	LIGHTING UNIT TYPE 1
	TREE GRATE & FRAME	CHARCOAL COLORED CONCRETE	LIGHTING UNIT TYPE 2
			LIGHTING UNIT TYPE 3



I HEREBY CERTIFY THAT THIS PLAN, SPECIFICATION, OR REPORT WAS PREPARED BY ME OR UNDER MY DIRECT SUPERVISION AND THAT I AM A DULY LICENSED LANDSCAPE ARCHITECT UNDER THE LAWS OF THE STATE OF MINNESOTA.

JONATHAN D. NELSEN
 LIC. NO. 53433 DATE MM/DD/YYYY



2900 43RD STREET NW, SUITE 100
 ROCHESTER, MINNESOTA 55901
 Phone: (507) 208-4332
 Email: Rochester@bolton-menk.com
 www.bolton-menk.com

DESIGNED	NO.	ISSUED FOR	DATE
JDN, CRT			
CRT			
CHECKED			
JDN			
CLIENT PROJ. NO.			
H19.120756			

CITY OF WABASHA, MINNESOTA
 2023 STREET & UTILITY IMPROVEMENTS SAP 079-658-004 & 079-665-002
 STREETScape PLANS

SHEET
 #####

© Bolton & Menk, Inc. 2023. All Rights Reserved. WABASHA_C:\WWW\19120756\CAD\2023\2023-5-07-58.PLM