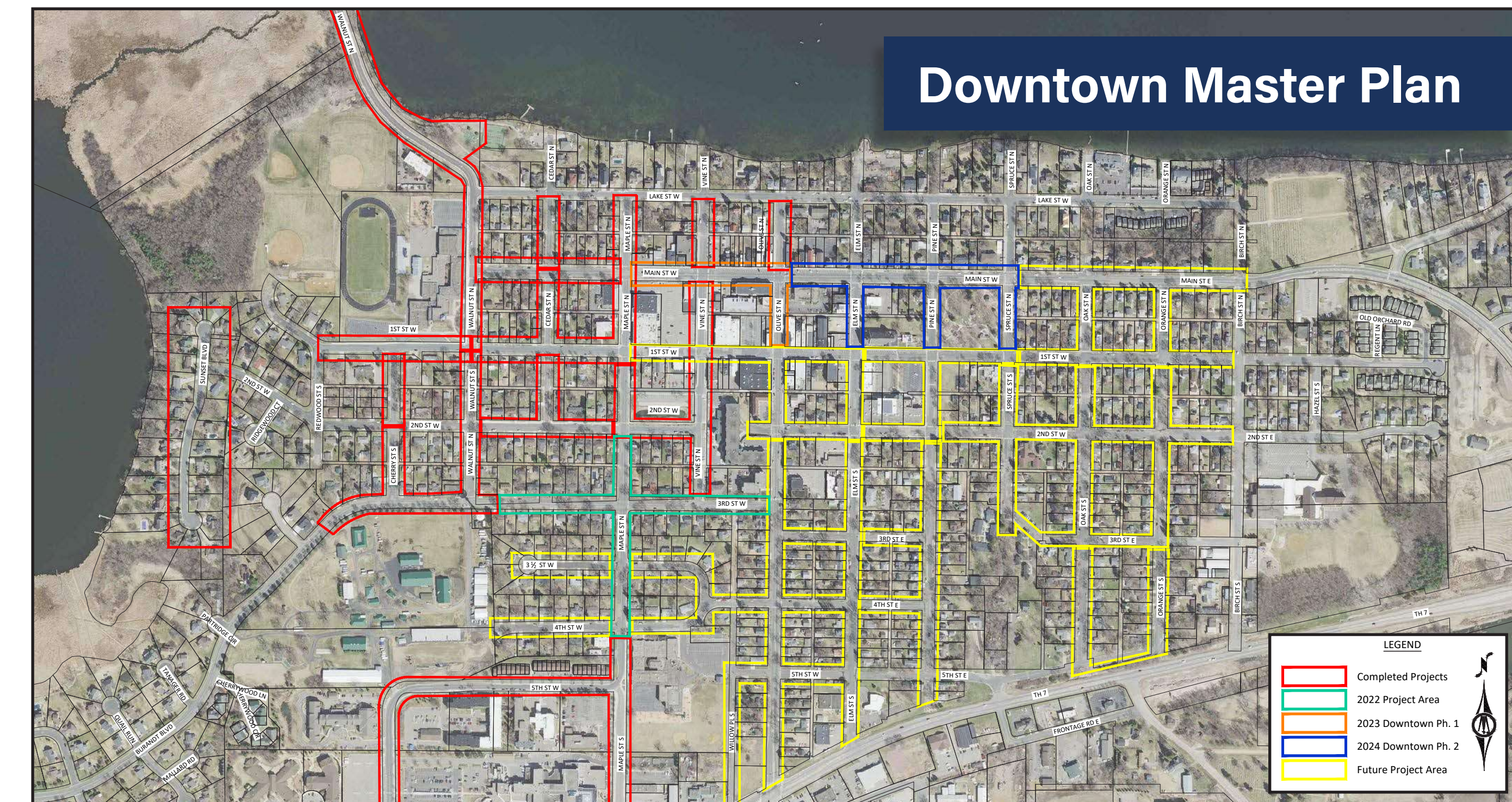
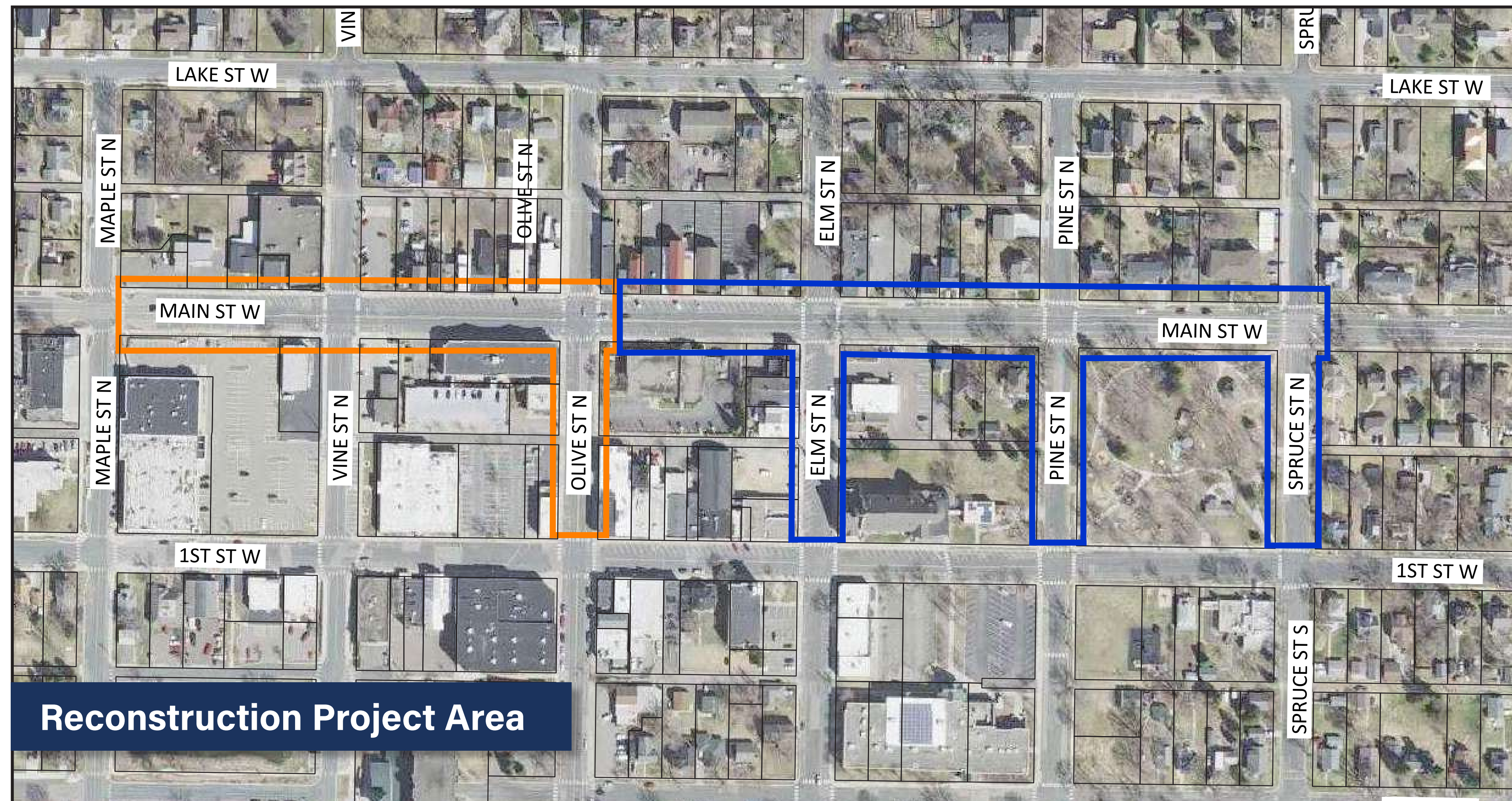




Downtown Waconia Reconstruction

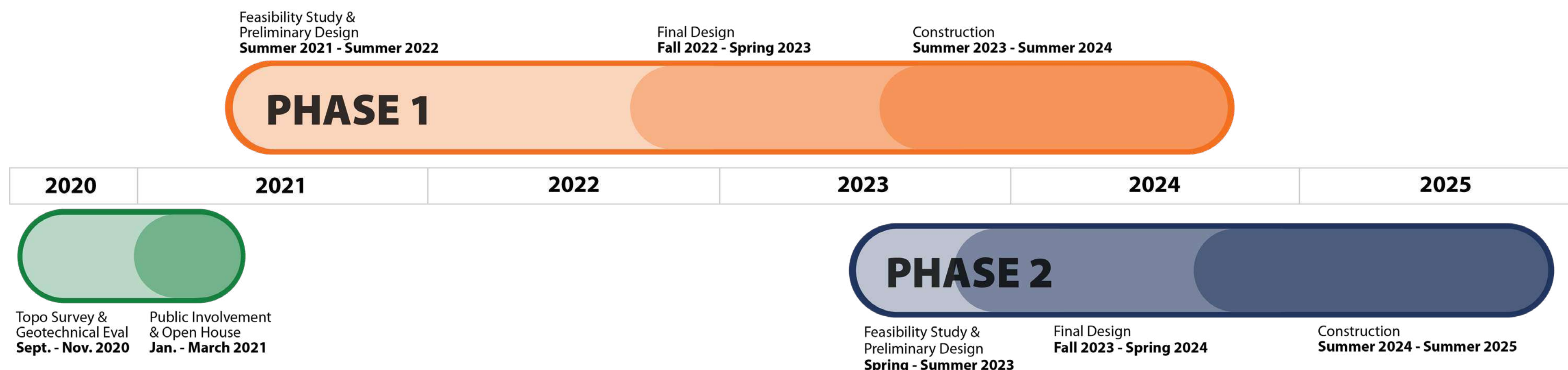
PROJECT OVERVIEW



In 2014, a **Downtown Master Plan** was created for the City of Waconia, to provide a framework that would help city leaders and other stakeholders revitalize downtown Waconia, physically and economically by:

- » Improving parking and pedestrian infrastructure
- » Developing a unique identity for downtown Waconia through signage and streetscaping
- » Re-establish Lake Waconia as a public destination that is easily accessible from the downtown

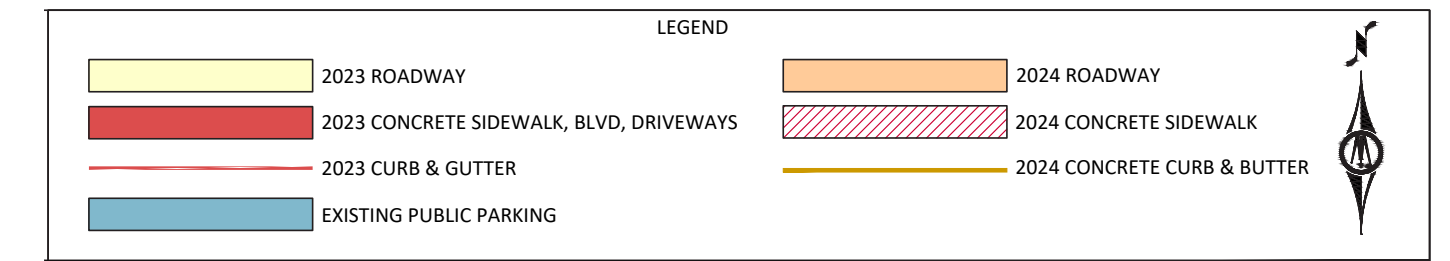
ANTICIPATED PROJECT TIMELINE



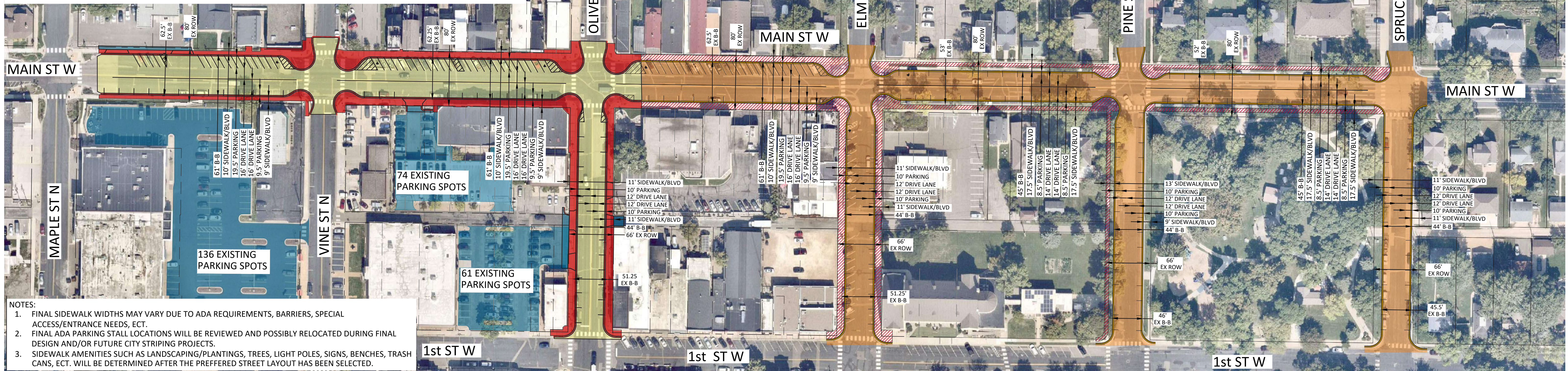
What will this project accomplish?

- » Remove and replace the roadway, parking, adjacent sidewalks, and the underlying public utilities
- » Replace and expand the storm sewer/drainage system
- » Implement stormwater treatment infrastructure
- » Replace and improve street lighting
- » Incorporate wayfinding and decorative signage

DESIGN OPTION 1

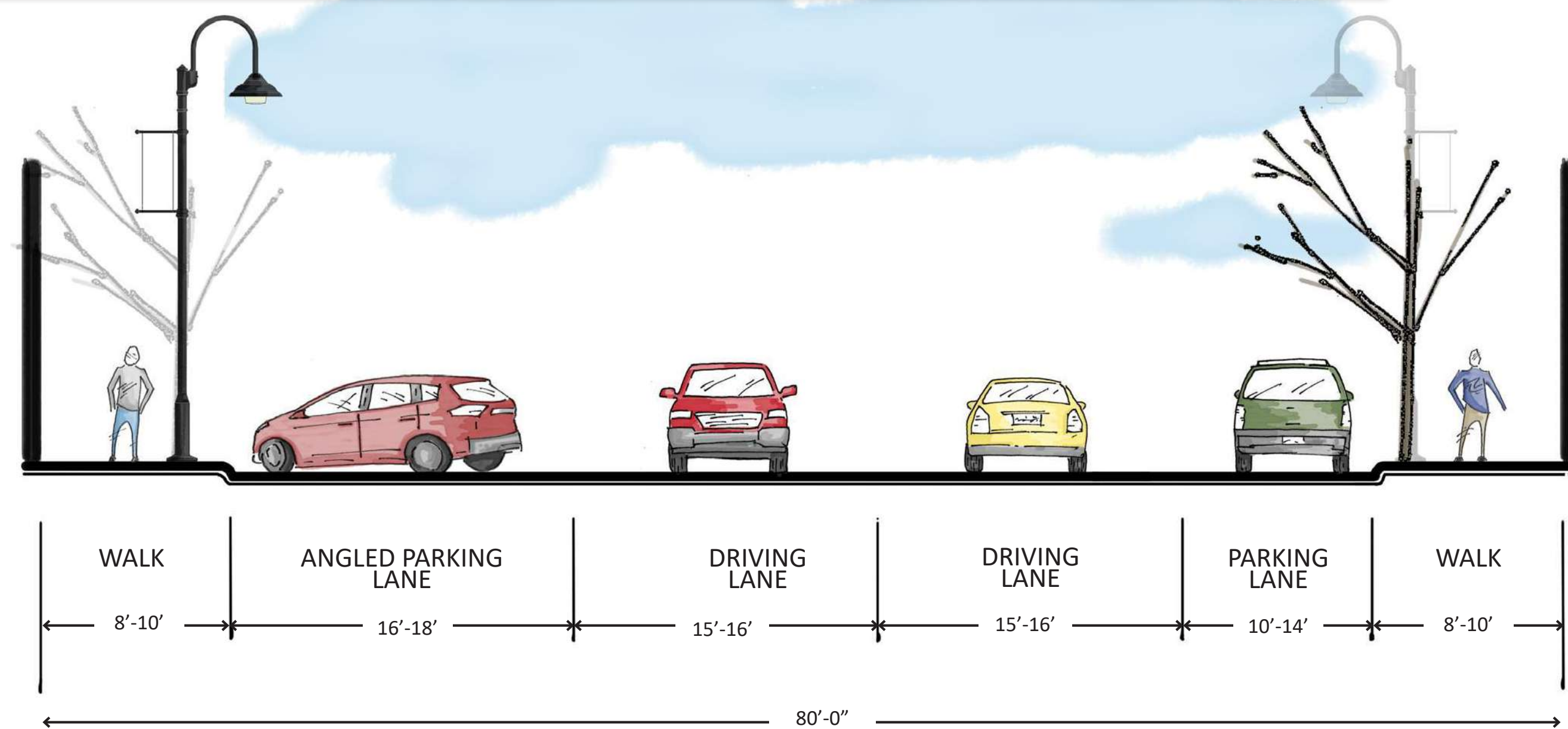


OPTION 1: 60° PARKING - 221 PARKING STALLS

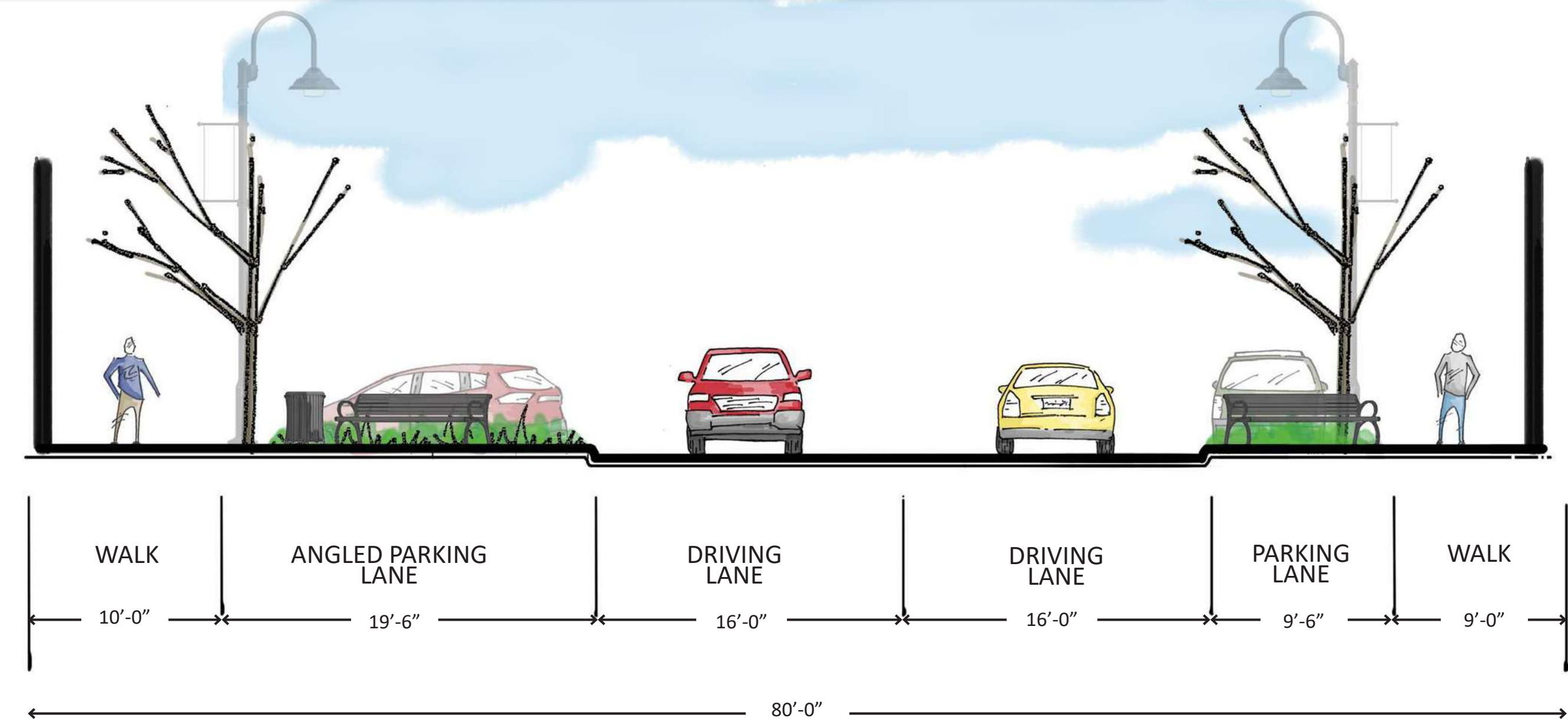


- NOTES:
1. FINAL SIDEWALK WIDTHS MAY VARY DUE TO ADA REQUIREMENTS, BARRIERS, SPECIAL ACCESS/ENTRANCE NEEDS, ECT.
 2. FINAL ADA PARKING STALL LOCATIONS WILL BE REVIEWED AND POSSIBLY RELOCATED DURING FINAL DESIGN AND/OR FUTURE CITY STRIPING PROJECTS.
 3. SIDEWALK AMENITIES SUCH AS LANDSCAPING/PLANTINGS, TREES, LIGHT POLES, SIGNS, BENCHES, TRASH CANS, ECT. WILL BE DETERMINED AFTER THE PREFERRED STREET LAYOUT HAS BEEN SELECTED.

Existing Corridor : Main Street (Maple Street to Elm Street)



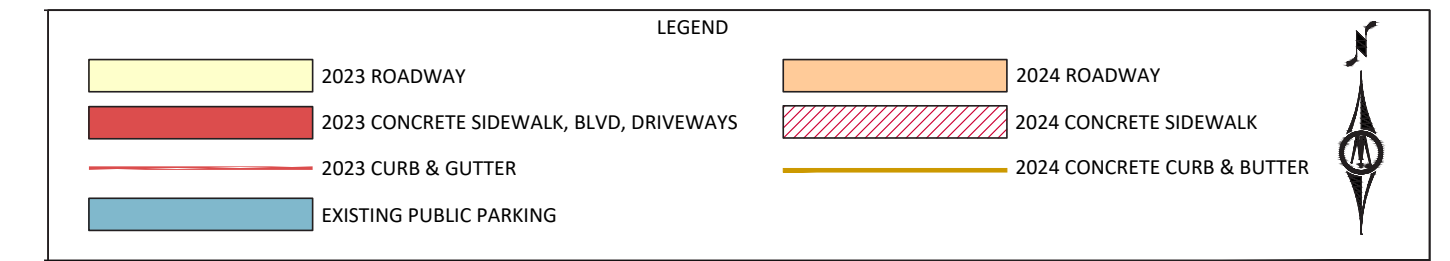
Option 1 : Main Street (Maple Street to Elm Street)



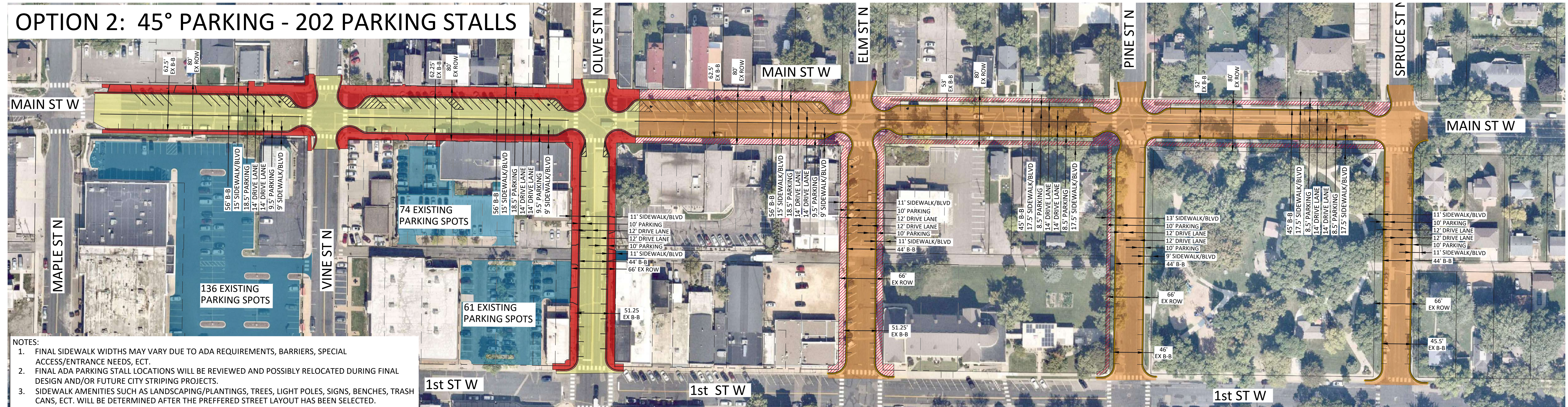


Downtown Waconia Reconstruction

DESIGN OPTION 2

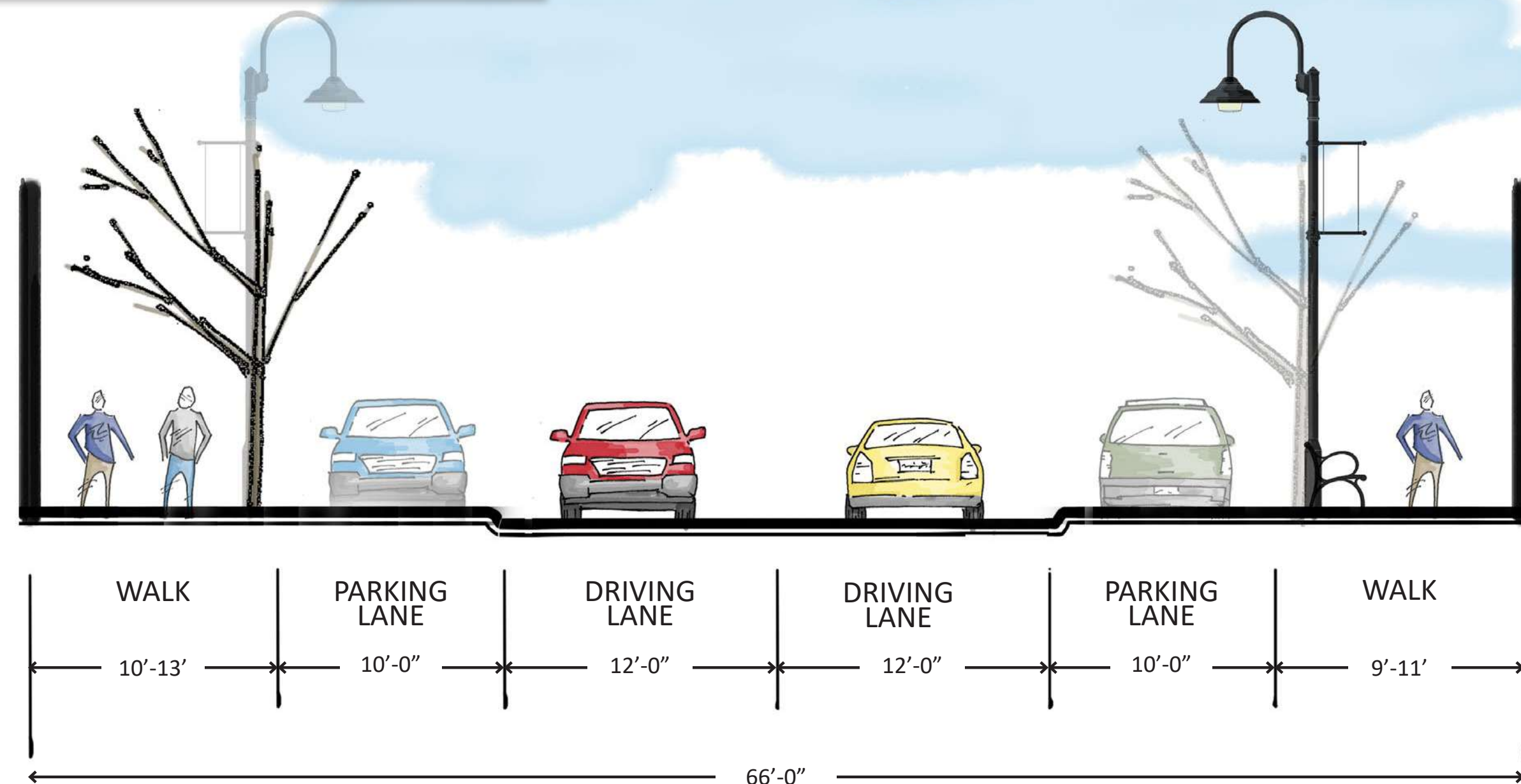


OPTION 2: 45° PARKING - 202 PARKING STALLS

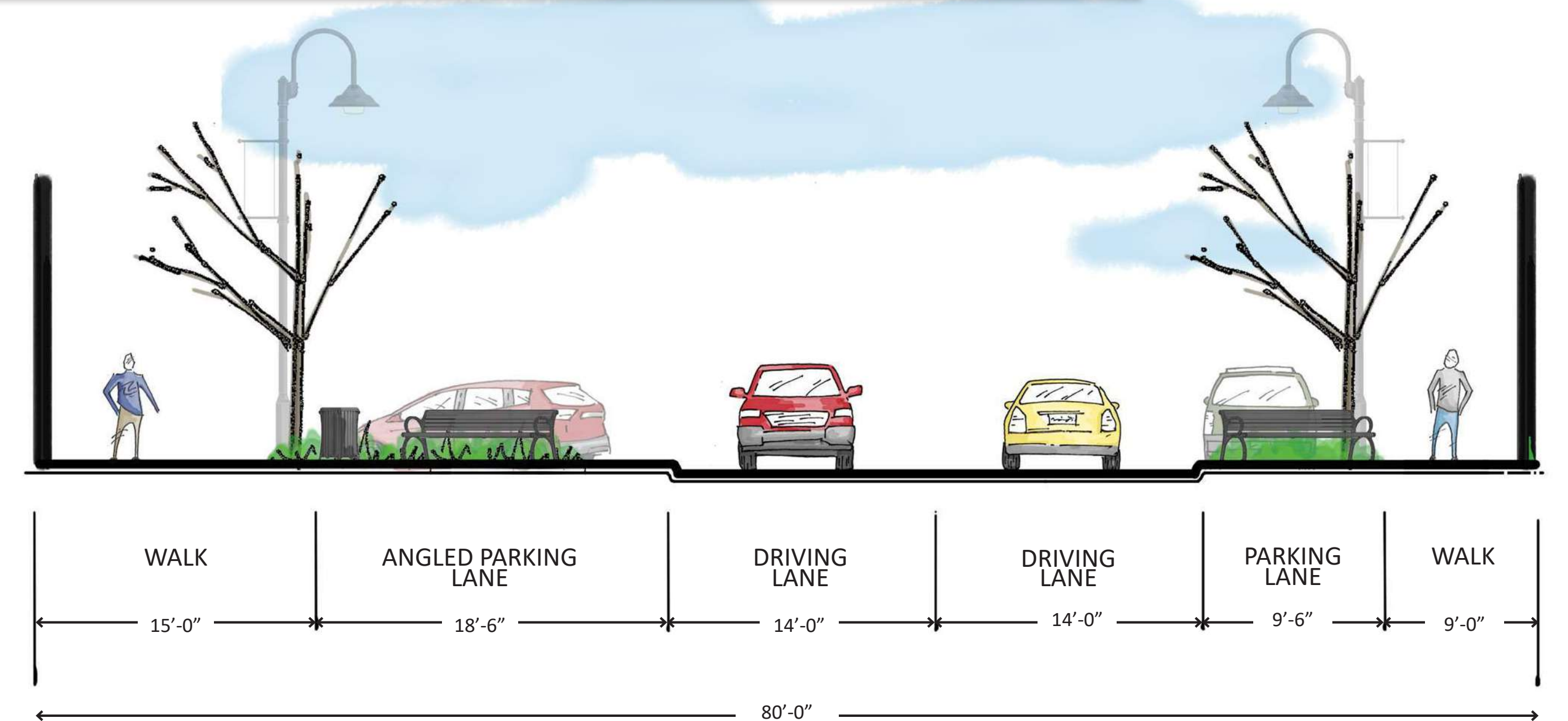


- NOTES:
1. FINAL SIDEWALK WIDTHS MAY VARY DUE TO ADA REQUIREMENTS, BARRIERS, SPECIAL ACCESS/ENTRANCE NEEDS, ECT.
 2. FINAL ADA PARKING STALL LOCATIONS WILL BE REVIEWED AND POSSIBLY RELOCATED DURING FINAL DESIGN AND/OR FUTURE CITY STRIPING PROJECTS.
 3. SIDEWALK AMENITIES SUCH AS LANDSCAPING/PLANTINGS, TREES, LIGHT POLES, SIGNS, BENCHES, TRASH CANS, ECT. WILL BE DETERMINED AFTER THE PREFERRED STREET LAYOUT HAS BEEN SELECTED.

Proposed Side Streets



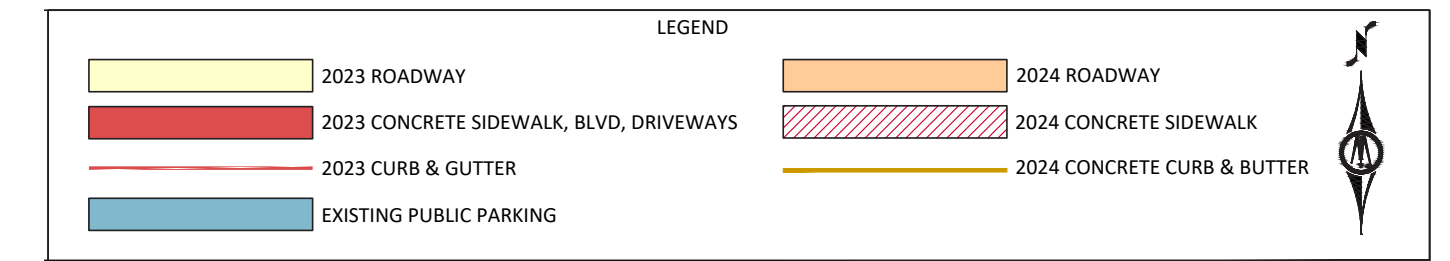
Option 2 : Main Street (Maple Street to Elm Street)



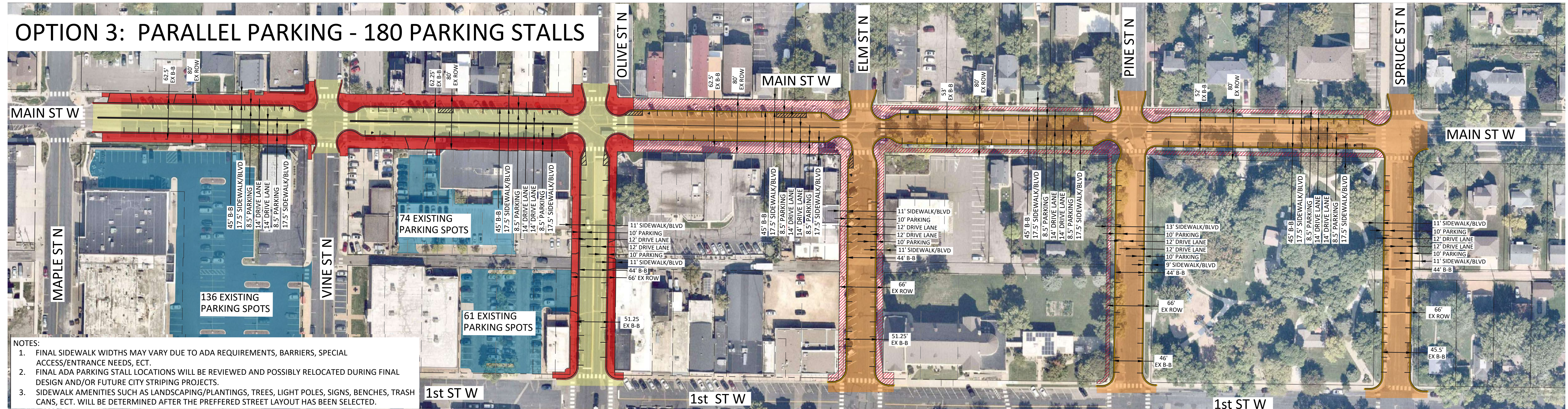


Downtown Waconia Reconstruction

DESIGN OPTION 3



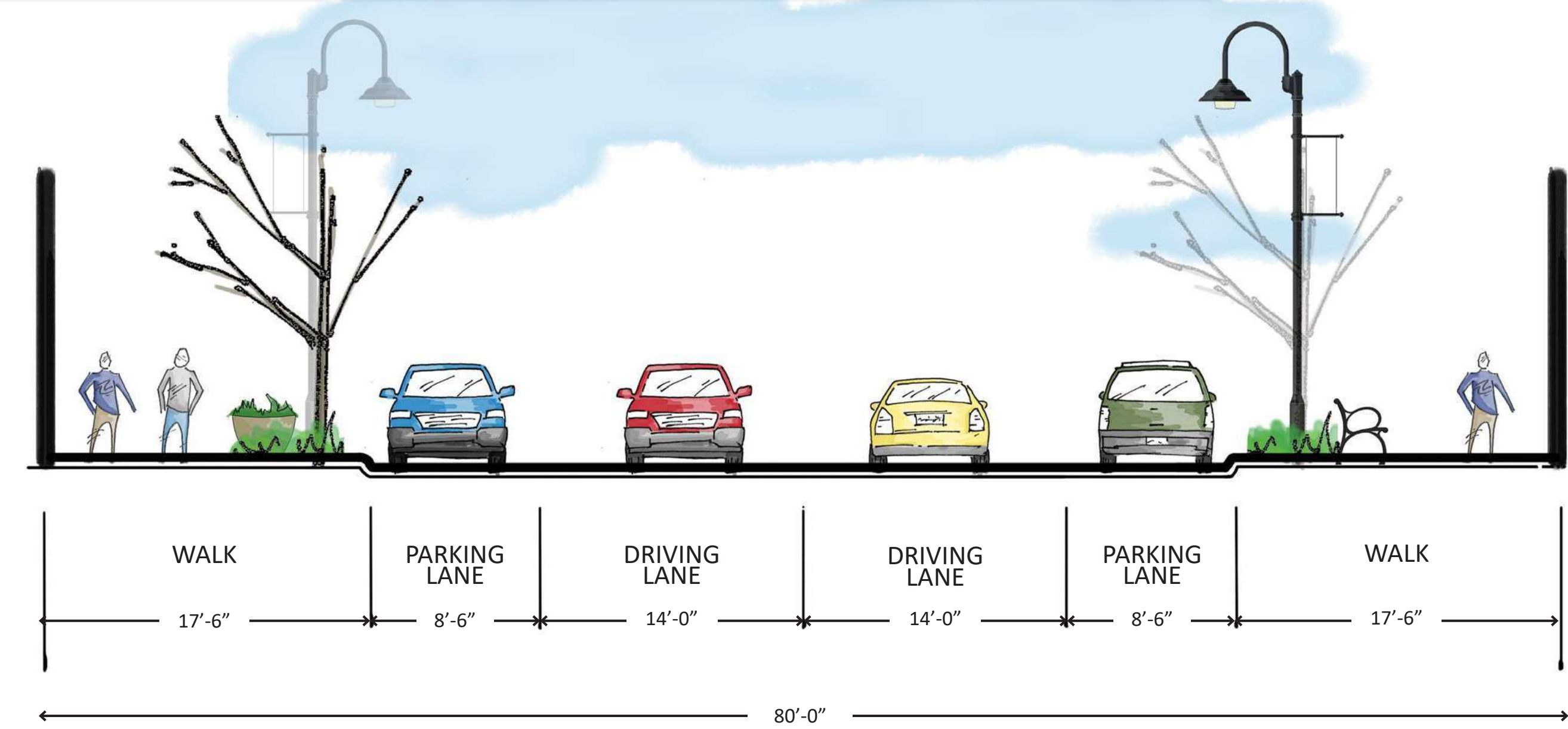
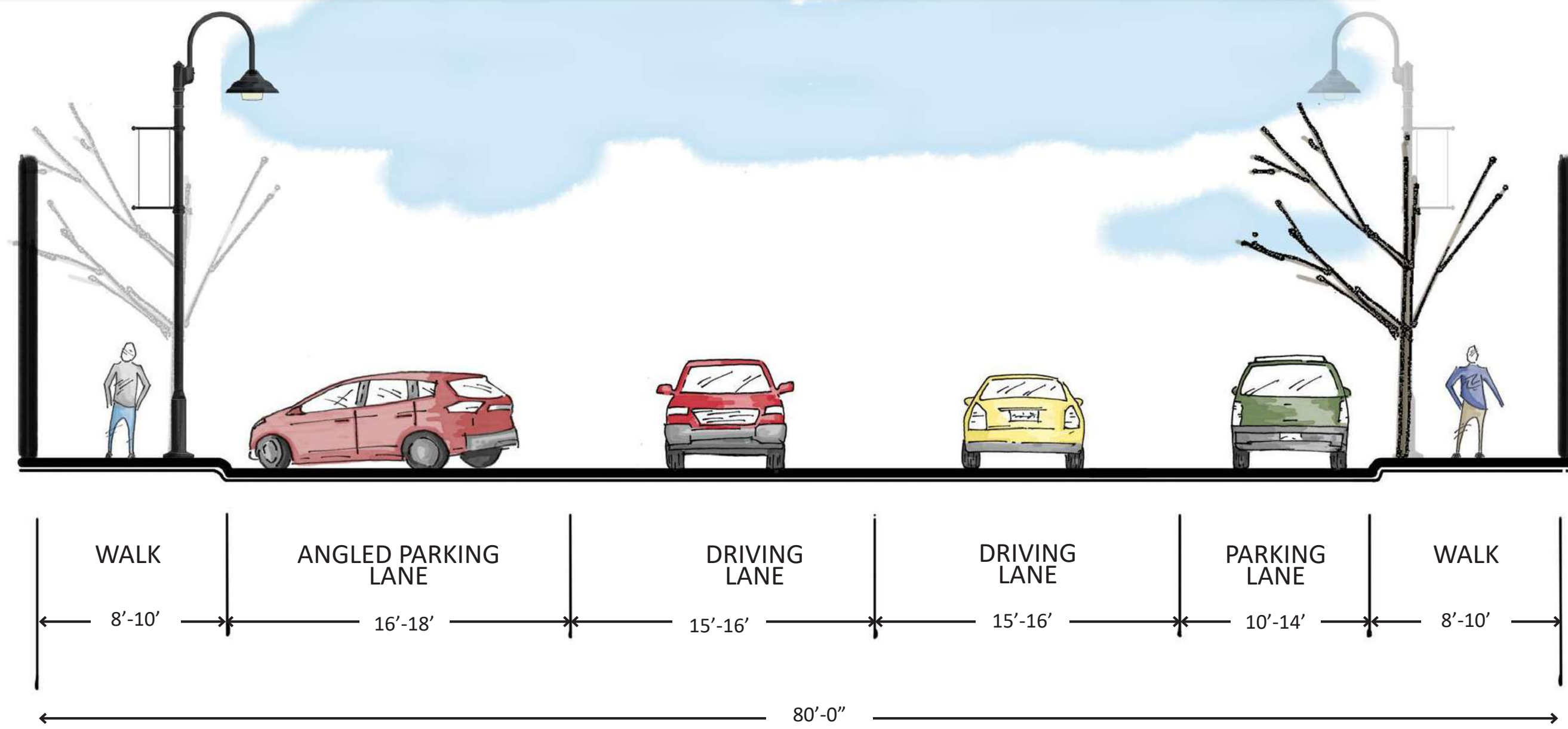
OPTION 3: PARALLEL PARKING - 180 PARKING STALLS



- NOTES:
1. FINAL SIDEWALK WIDTHS MAY VARY DUE TO ADA REQUIREMENTS, BARRIERS, SPECIAL ACCESS/ENTRANCE NEEDS, ECT.
 2. FINAL ADA PARKING STALL LOCATIONS WILL BE REVIEWED AND POSSIBLY RELOCATED DURING FINAL DESIGN AND/OR FUTURE CITY STRIPING PROJECTS.
 3. SIDEWALK AMENITIES SUCH AS LANDSCAPING/PLANTINGS, TREES, LIGHT POLES, SIGNS, BENCHES, TRASH CANS, ECT. WILL BE DETERMINED AFTER THE PREFERRED STREET LAYOUT HAS BEEN SELECTED.

Existing Corridor : Main Street (Maple Street to Elm Street)

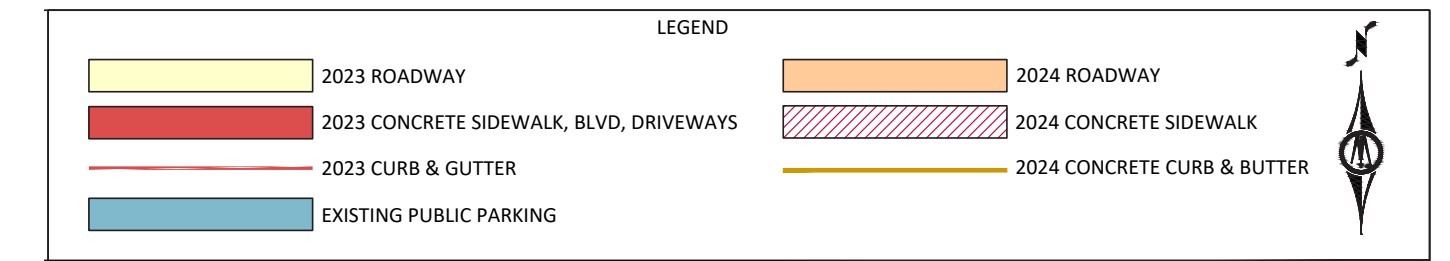
Option 3 : Main Street (Maple Street to Elm Street)



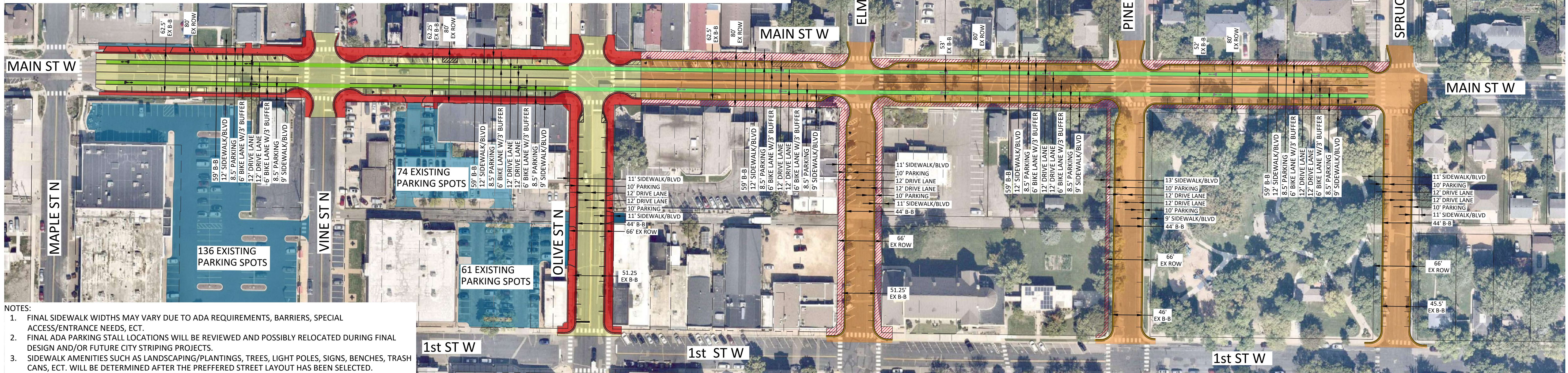


Downtown Waconia Reconstruction

DESIGN OPTION 4

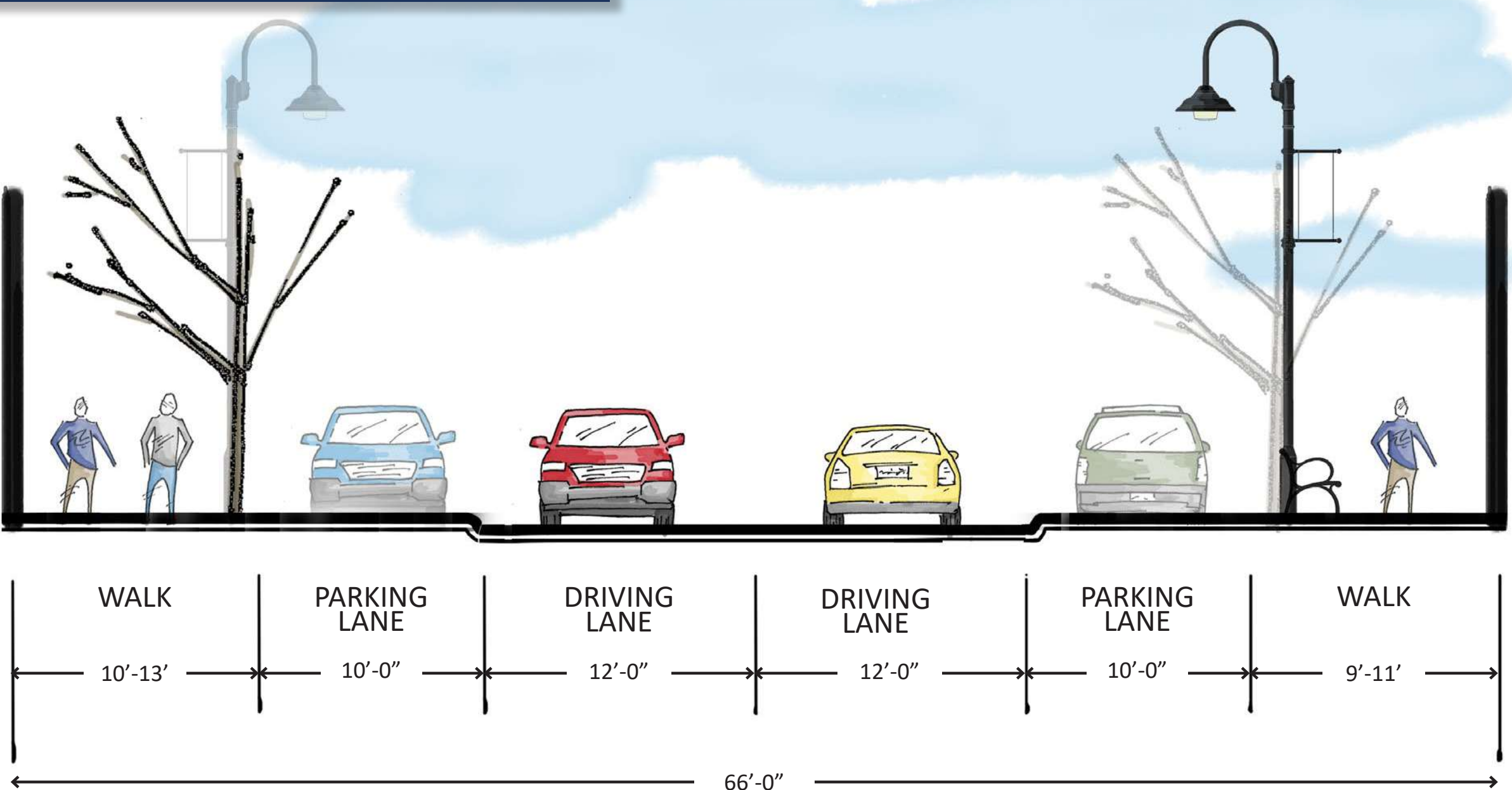


OPTION 4: PARALLEL PARKING WITH BIKE LANES - 180 PARKING STALLS



- NOTES:
1. FINAL SIDEWALK WIDTHS MAY VARY DUE TO ADA REQUIREMENTS, BARRIERS, SPECIAL ACCESS/ENTRANCE NEEDS, ECT.
 2. FINAL ADA PARKING STALL LOCATIONS WILL BE REVIEWED AND POSSIBLY RELOCATED DURING FINAL DESIGN AND/OR FUTURE CITY STRIPING PROJECTS.
 3. SIDEWALK AMENITIES SUCH AS LANDSCAPING/PLANTINGS, TREES, LIGHT POLES, SIGNS, BENCHES, TRASH CANS, ECT. WILL BE DETERMINED AFTER THE PREFERRED STREET LAYOUT HAS BEEN SELECTED.

Proposed Side Streets



Option 4 : Main Street (Maple Street to Elm Street)

