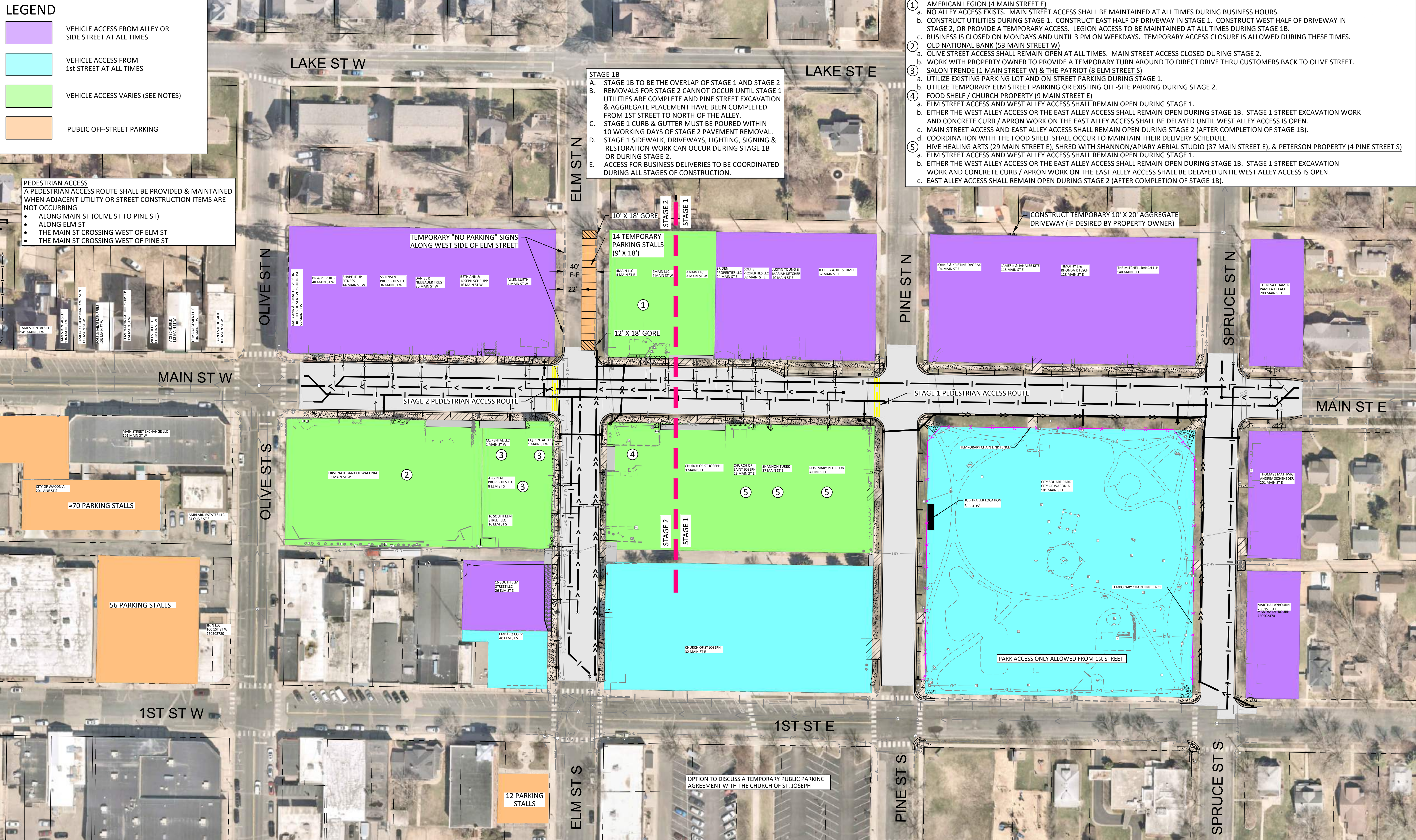


**LEGEND**

- VEHICLE ACCESS FROM ALLEY OR SIDE STREET AT ALL TIMES
- VEHICLE ACCESS FROM 1ST STREET AT ALL TIMES
- VEHICLE ACCESS VARIES (SEE NOTES)
- PUBLIC OFF-STREET PARKING

**PEDESTRIAN ACCESS**  
 A PEDESTRIAN ACCESS ROUTE SHALL BE PROVIDED & MAINTAINED WHEN ADJACENT UTILITY OR STREET CONSTRUCTION ITEMS ARE NOT OCCURRING

- ALONG MAIN ST (OLIVE ST TO PINE ST)
- ALONG ELM ST
- THE MAIN ST CROSSING WEST OF ELM ST
- THE MAIN ST CROSSING WEST OF PINE ST



- AMERICAN LEGION (4 MAIN STREET E)
  - NO ALLEY ACCESS EXISTS. MAIN STREET ACCESS SHALL BE MAINTAINED AT ALL TIMES DURING BUSINESS HOURS.
  - CONSTRUCT EAST HALF OF DRIVEWAY IN STAGE 1. CONSTRUCT WEST HALF OF DRIVEWAY IN STAGE 2, OR PROVIDE A TEMPORARY ACCESS. LEGION ACCESS TO BE MAINTAINED AT ALL TIMES DURING STAGE 1B.
  - BUSINESS IS CLOSED ON MONDAYS AND UNTIL 3 PM ON WEEKDAYS. TEMPORARY ACCESS CLOSURE IS ALLOWED DURING THESE TIMES.
- OLD NATIONAL BANK (53 MAIN STREET W)
  - OLIVE STREET ACCESS SHALL REMAIN OPEN AT ALL TIMES. MAIN STREET ACCESS CLOSED DURING STAGE 2.
  - WORK WITH PROPERTY OWNER TO PROVIDE A TEMPORARY TURN AROUND TO DIRECT DRIVE THRU CUSTOMERS BACK TO OLIVE STREET.
- SALON TRENDE (1 MAIN STREET W) & THE PATRIOT (8 ELM STREET S)
  - UTILIZE EXISTING PARKING LOT AND ON-STREET PARKING DURING STAGE 1.
  - UTILIZE TEMPORARY ELM STREET PARKING OR EXISTING OFF-SITE PARKING DURING STAGE 2.
- FOOD SHELF / CHURCH PROPERTY (9 MAIN STREET E)
  - ELM STREET ACCESS AND WEST ALLEY ACCESS SHALL REMAIN OPEN DURING STAGE 1.
  - EITHER THE WEST ALLEY ACCESS OR THE EAST ALLEY ACCESS SHALL REMAIN OPEN DURING STAGE 1B. STAGE 1 STREET EXCAVATION WORK AND CONCRETE CURB / APRON WORK ON THE EAST ALLEY ACCESS SHALL BE DELAYED UNTIL WEST ALLEY ACCESS IS OPEN.
  - MAIN STREET ACCESS AND EAST ALLEY ACCESS SHALL REMAIN OPEN DURING STAGE 2 (AFTER COMPLETION OF STAGE 1B).
  - COORDINATION WITH THE FOOD SHELF SHALL OCCUR TO MAINTAIN THEIR DELIVERY SCHEDULE.
- HIVE HEALING ARTS (29 MAIN STREET E), SHRED WITH SHANNON/APIARY AERIAL STUDIO (37 MAIN STREET E), & PETERSON PROPERTY (4 PINE STREET S)
  - ELM STREET ACCESS AND WEST ALLEY ACCESS SHALL REMAIN OPEN DURING STAGE 1.
  - EITHER THE WEST ALLEY ACCESS OR THE EAST ALLEY ACCESS SHALL REMAIN OPEN DURING STAGE 1B. STAGE 1 STREET EXCAVATION WORK AND CONCRETE CURB / APRON WORK ON THE EAST ALLEY ACCESS SHALL BE DELAYED UNTIL WEST ALLEY ACCESS IS OPEN.
  - EAST ALLEY ACCESS SHALL REMAIN OPEN DURING STAGE 2 (AFTER COMPLETION OF STAGE 1B).

**STAGE 1B**  
 A. STAGE 1B TO BE THE OVERLAP OF STAGE 1 AND STAGE 2  
 B. REMOVALS FOR STAGE 2 CANNOT OCCUR UNTIL STAGE 1 UTILITIES ARE COMPLETE AND PINE STREET EXCAVATION & AGGREGATE PLACEMENT HAVE BEEN COMPLETED FROM 1ST STREET TO NORTH OF THE ALLEY.  
 C. STAGE 1 CURB & GUTTER MUST BE POURED WITHIN 10 WORKING DAYS OF STAGE 2 PAVEMENT REMOVAL.  
 D. STAGE 1 SIDEWALK, DRIVEWAYS, LIGHTING, SIGNING & RESTORATION WORK CAN OCCUR DURING STAGE 1B OR DURING STAGE 2.  
 E. ACCESS FOR BUSINESS DELIVERIES TO BE COORDINATED DURING ALL STAGES OF CONSTRUCTION.

TEMPORARY "NO PARKING" SIGNS ALONG WEST SIDE OF ELM STREET

10' X 18' GORE  
 14 TEMPORARY PARKING STALLS (9' X 18')  
 12' X 18' GORE

CONSTRUCT TEMPORARY 10' X 20' AGGREGATE DRIVEWAY (IF DESIRED BY PROPERTY OWNER)

STAGE 2 PEDESTRIAN ACCESS ROUTE

STAGE 1 PEDESTRIAN ACCESS ROUTE

≈70 PARKING STALLS

56 PARKING STALLS

12 PARKING STALLS

OPTION TO DISCUSS A TEMPORARY PUBLIC PARKING AGREEMENT WITH THE CHURCH OF ST. JOSEPH

TEMPORARY CHAIN LINK FENCE  
 JOB TRAILER LOCATION ≈ 8' X 35'  
 CITY SQUARE PARK CITY OF WACONIA 100 MAIN ST E  
 PARK ACCESS ONLY ALLOWED FROM 1ST STREET

H:\WACA\C14121688\CAD\Layouts\Utility & Open House Layouts\Fig-121688-Overall Staging Layout.dwg 1/26/2024 8:34:27 AM