



Wentworth Avenue (CSAH 8) Project Update

February 13, 2018

Outline

Purpose & Need

Scope & Considerations

Schedule

Questions



Project Purpose

Improve roadway structure

Improve safety for vehicles and pedestrians

Improve traffic operations



Why is this project important?

Wentworth connects three cities in Dakota County

Safety issues

Roadway last graded in 1946



Project Scope

Roadway Reconstruction – Delaware to Humboldt

Roadway Resurfacing – Humboldt to Robert

Designated Pedestrian/Bicycle Routes

Drainage Improvements

Public Utility Improvements

Existing Rural Roadway



Proposed Urban Roadway



Project Considerations

Developed alternatives based on:

6000 vehicles a day

Land use

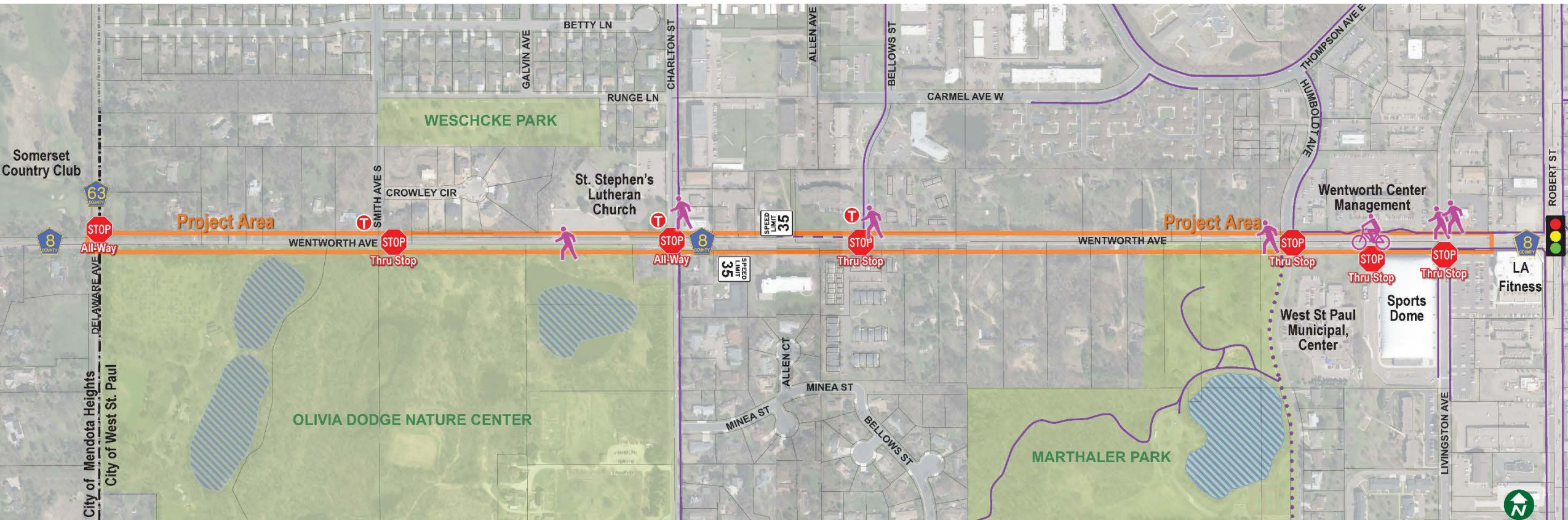
6 pedestrian and 1 bicycle accident in 10 years

Analyzed alternatives based on project needs:

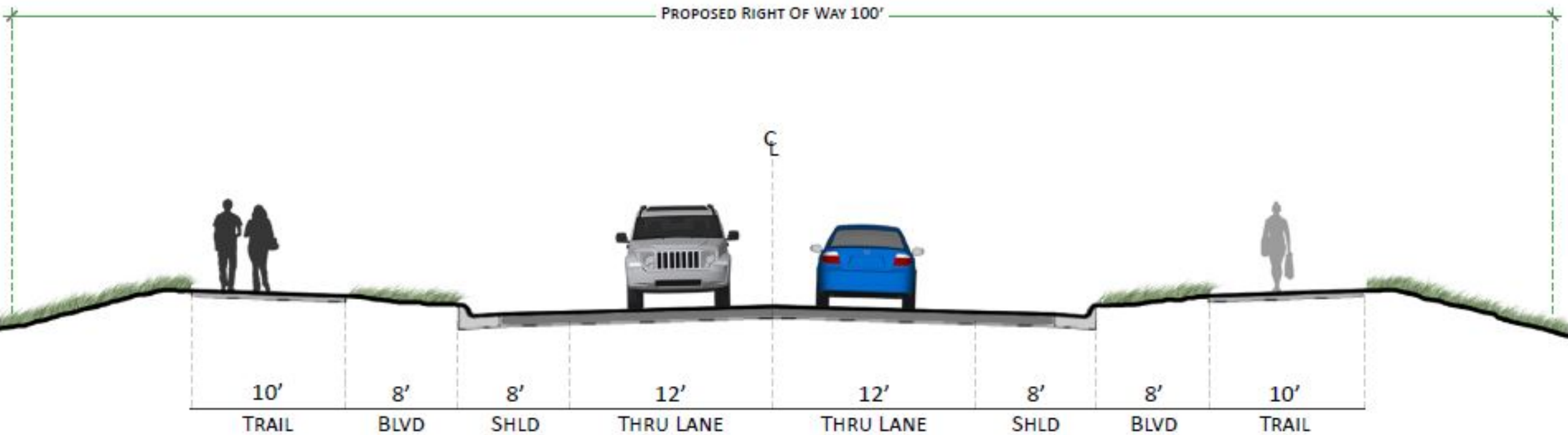
✓ Optimize safety and operations

✓ Accommodate multiple modes of transportation

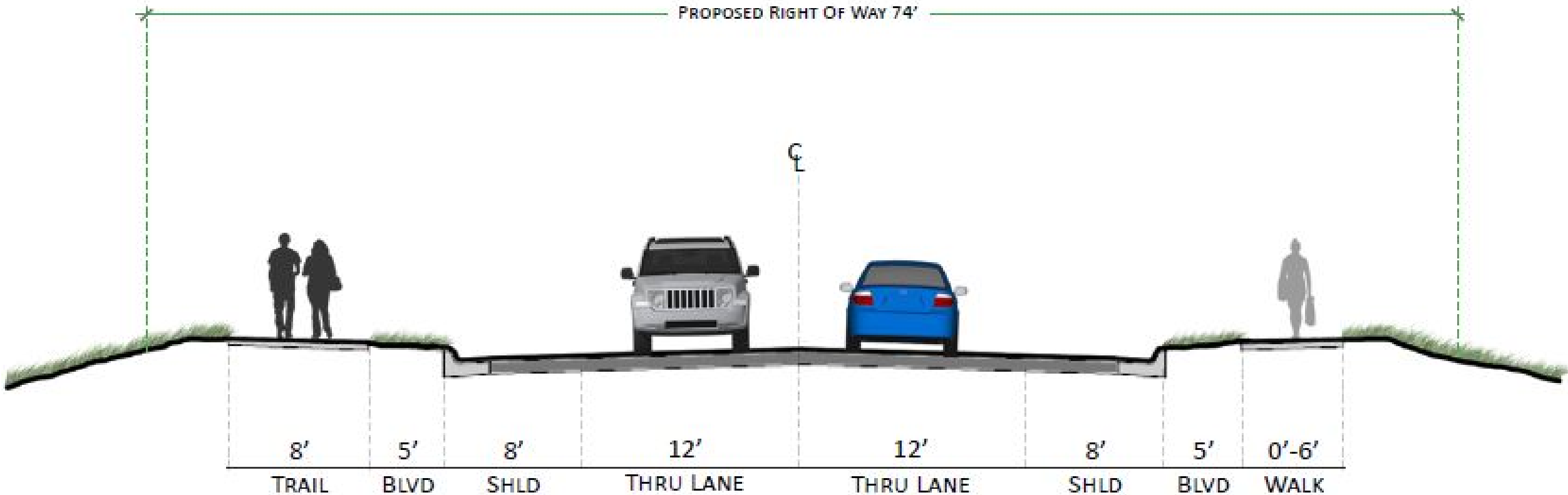
✓ Minimize impacts to properties and natural areas



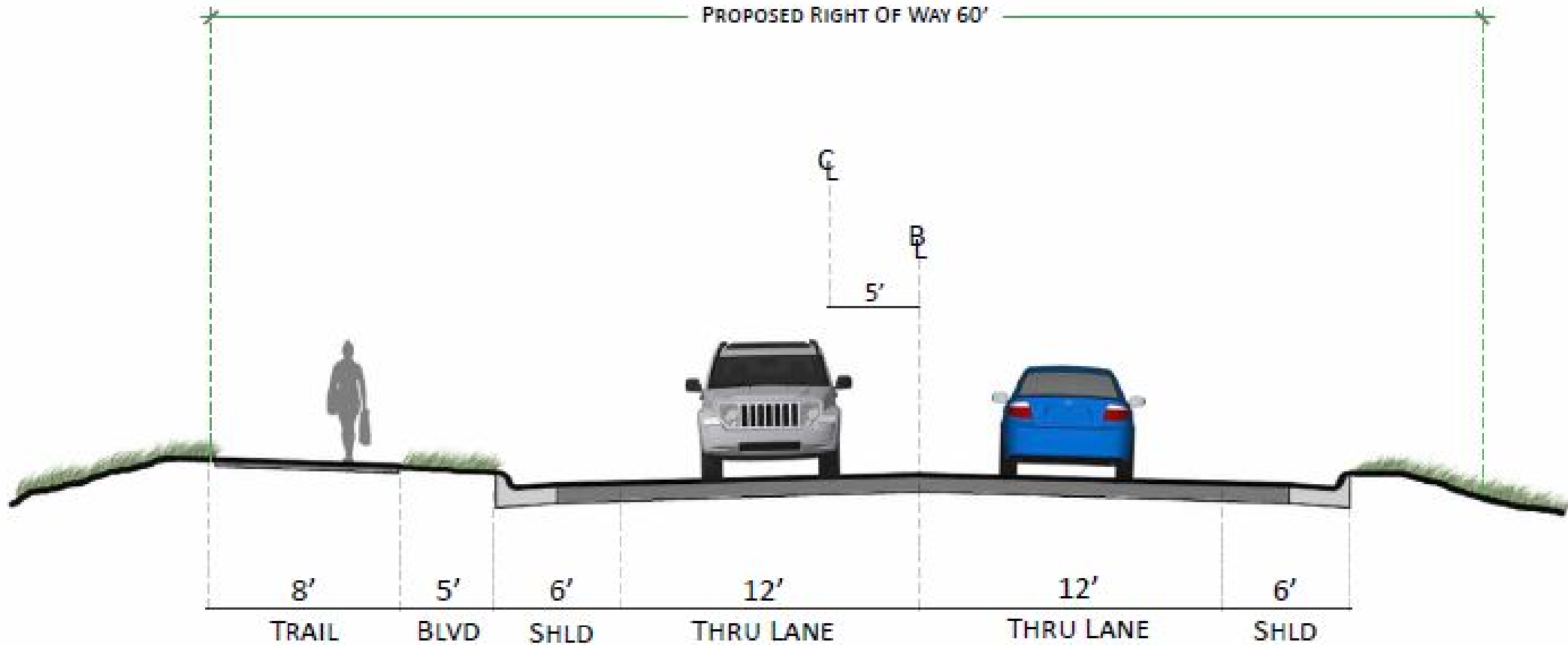
Project Alternatives



Project Alternatives



Project Alternatives



Concern for Pedestrian Safety

Public comments regarding
bike/pedestrian issues

“unsafe pedestrian conditions”

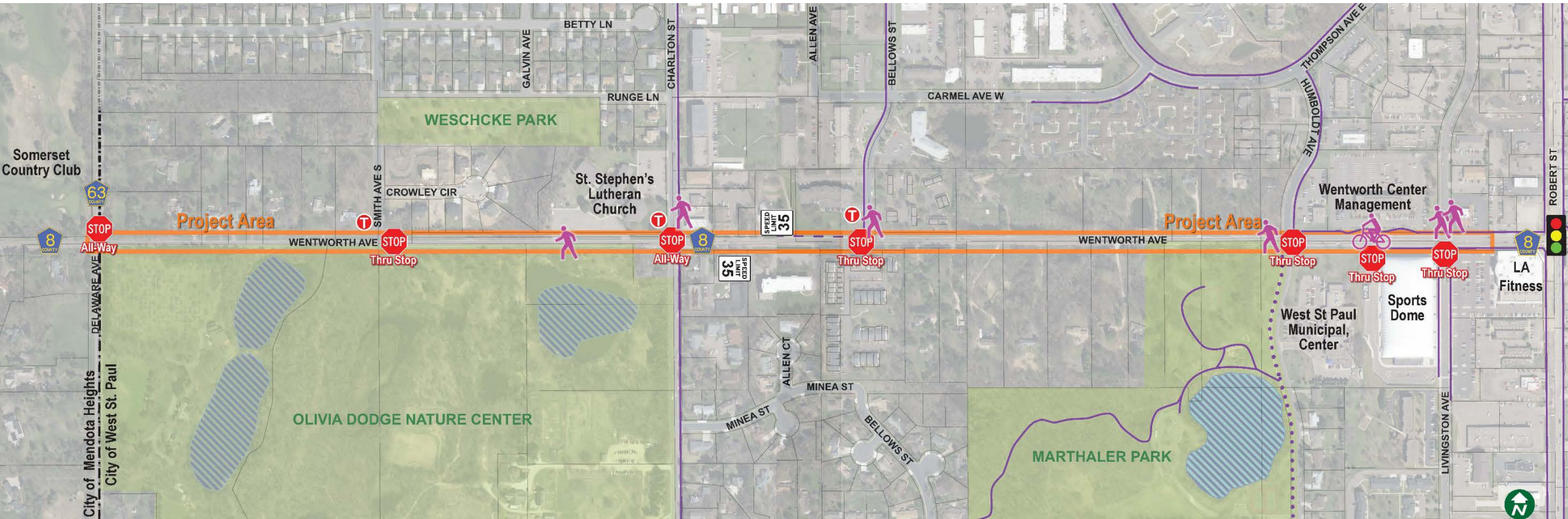
“sidewalks on both sides is a must”

“higher speeds and hills make a shared roadway unsafe”

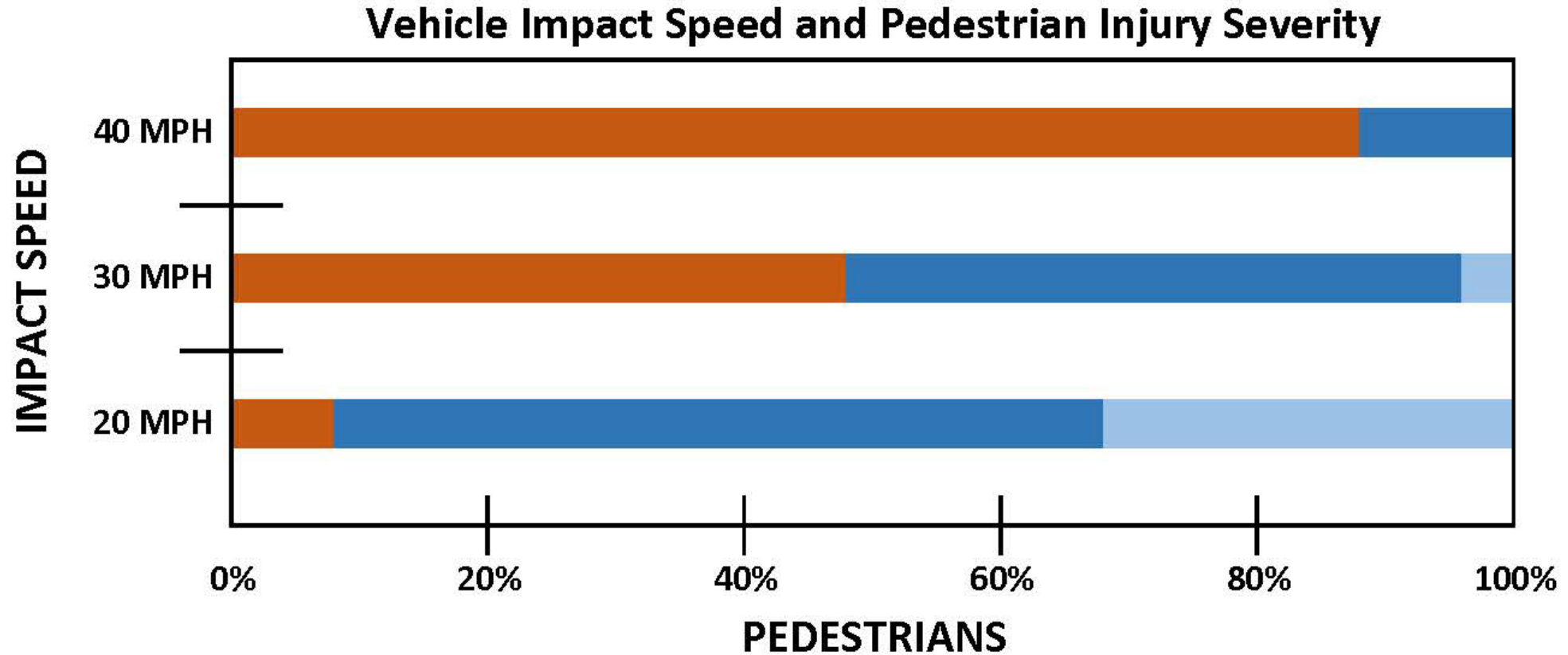


Pedestrian Demand

Residential densities, commercial areas, and parks generate pedestrian demand on Wentworth Avenue



40 mph impact speed = 90% chance of pedestrian fatality

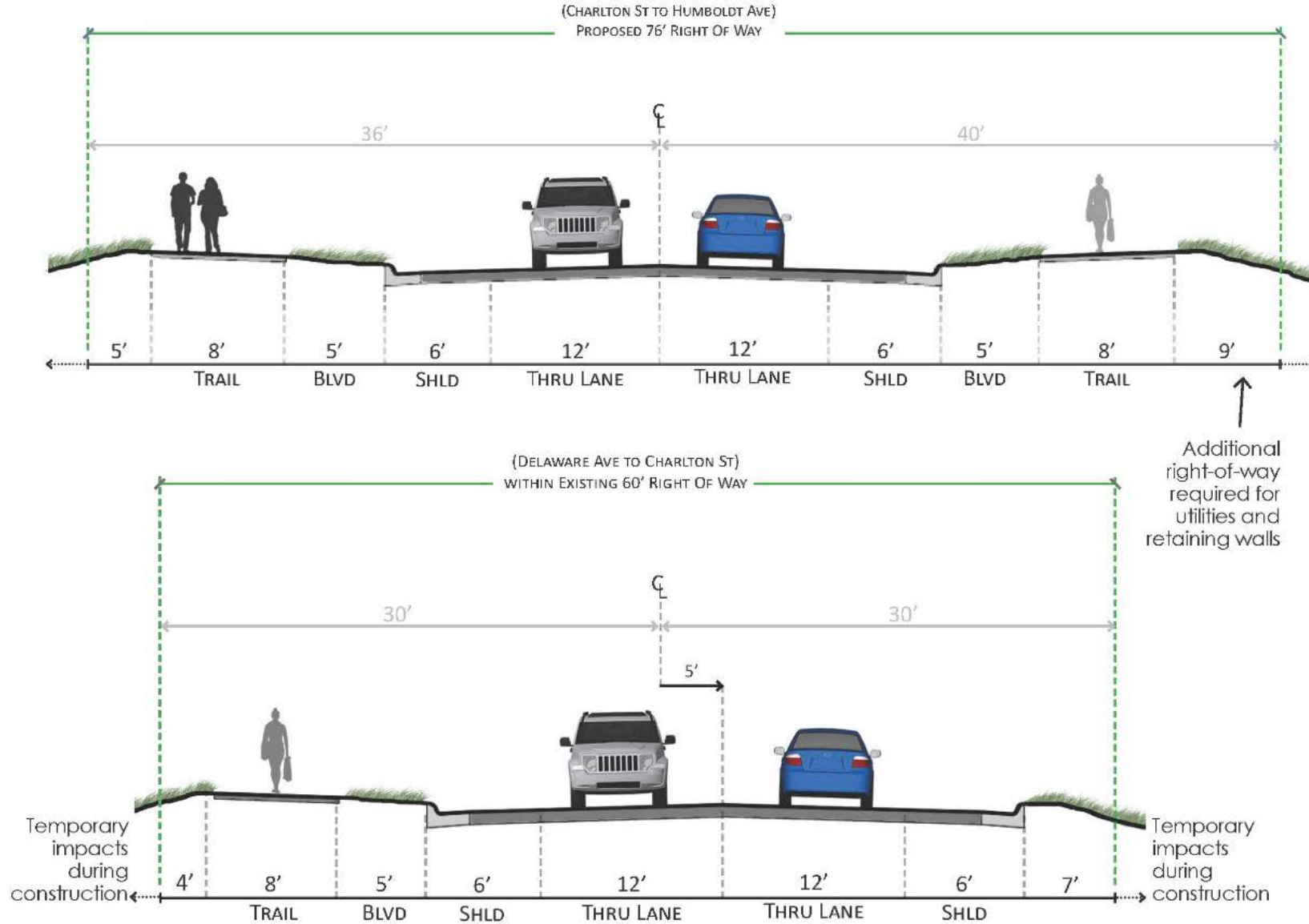


As speeds increase, the number of pedestrian fatalities also increases.

Source: UK Department of Environment, Transport, and the Regions (DETR)

- FATAL
- INJURY
- NON-INJURY

Proposed Alternative



Right-of-Way Acquisition Process

3rd Party **Appraisal**



Negotiations with Property Owners



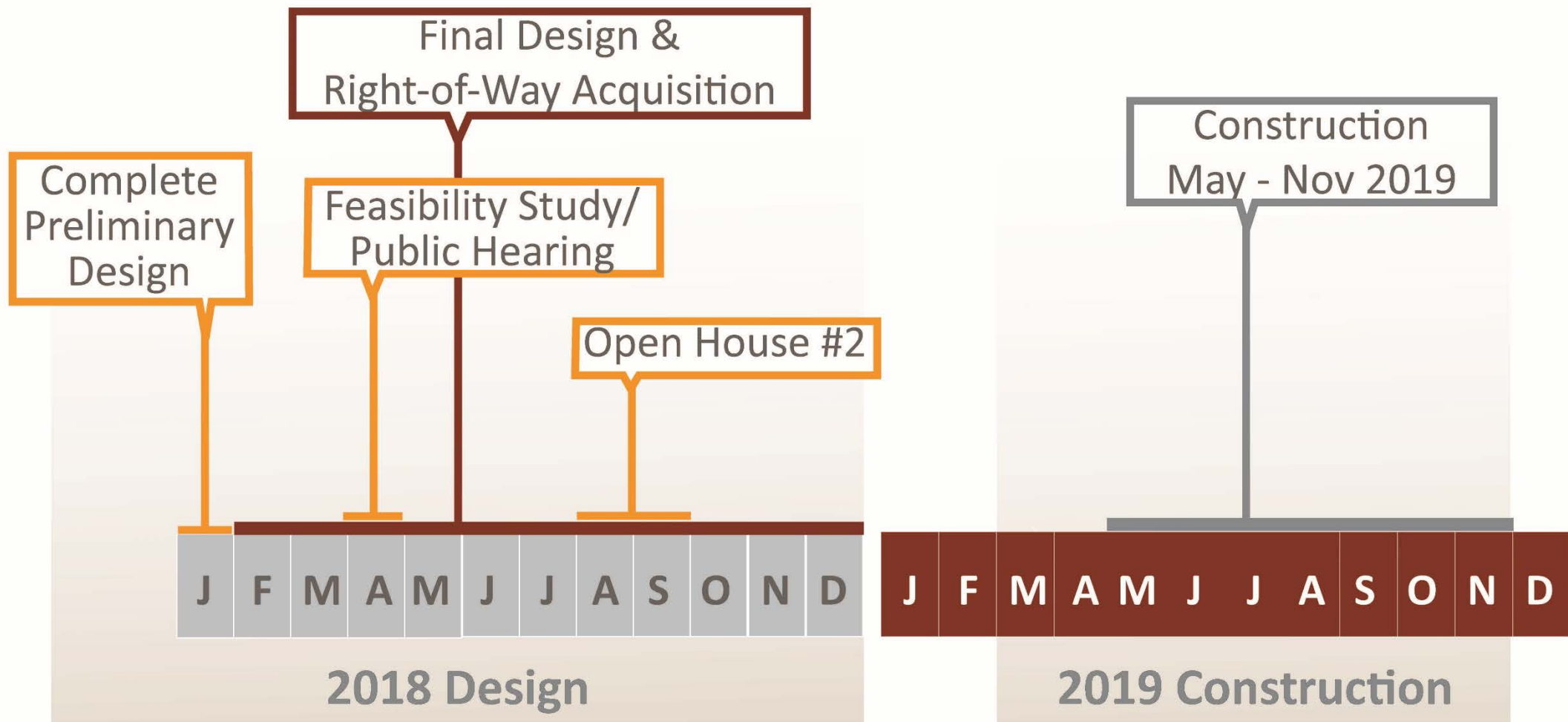
Compensation to Property Owners



Public Utilities



Project Schedule



Dakota
COUNTY



Questions?