

# Street Improvement Project West Newsletter

June 2025

## Construction schedule:

Start: July 7, 2025  
Finish: November 2025

**City of Willmar**  
333 6<sup>th</sup> Street SW  
Willmar, MN 56201

Justin DeLeeuw  
Public Works Director  
333 6<sup>th</sup> Street SW  
Willmar, MN 56201  
Phone: 320-235-4252

## Engineer:

**Bolton & Menk, Inc.**  
2040 Highway 12 East  
Willmar, MN 56201  
Phone: 320-231-3956  
[www.bolton-menk.com](http://www.bolton-menk.com)

Spencer Johnson, P.E.  
Project Manager  
Cell Phone: 320-979-6136  
E-mail: [Spencer.Johnson@bolton-menk.com](mailto:Spencer.Johnson@bolton-menk.com)

Nate Thein  
Resident Project Representative  
Cell Phone: 320-979-9070  
E-mail: [Nate.Thein@bolton-menk.com](mailto:Nate.Thein@bolton-menk.com)

## Contractor:

**Duininck Incorporated**  
PO Box 208  
Prinsburg, MN 56281

Crystal Swanson  
Project Manager  
Phone: 320-212-9384  
E-mail: [crystalswanson@duininck.com](mailto:crystalswanson@duininck.com)

Justin Zylstra  
Lead Project Manager  
Cell Phone: 320-212-3954  
E-mail: [JustinZ@duininck.com](mailto:JustinZ@duininck.com)



## Overview

The City of Willmar is undertaking a construction project to improve the following City streets: Eagle Ridge Drive W, Fairway Drive NE, 8<sup>th</sup> Avenue NW, 29<sup>th</sup> Street NW, 7<sup>th</sup> Avenue NW, 21<sup>st</sup> Avenue SW, 22<sup>nd</sup> Street SW, and 24<sup>th</sup> Street SW. The attached maps show the project locations and phasing plan for the planned improvements. The project includes the full depth reclamation of the asphalt pavement and road section, mill & overlay, spot repair of curb and gutter, spot repair of storm sewer, and asphalt paving.



## Project Timeline

Construction is planned to begin on Eagle Ridge Drive West in the week of July 7, 2025. The attached phasing maps have been arranged in order of the planned construction process and the approximate construction timeframes for each area are provided below. Please note that construction schedules are subject to change as the construction season progresses.

- Phase 1 – Eagle Ridge Drive W
  - Full Depth Reclamation
  - Early July to Late August
- Phase 2 – Fairway Drive NE
  - Mill & Overlay
  - Late July to Late August
- Phase 3 – 8<sup>th</sup> Avenue NW & 29<sup>th</sup> Street NW
  - Full Depth Reclamation
  - Late July to Late September
- Phase 4 – 7<sup>th</sup> Avenue NW
  - Full Depth Reclamation
  - Late August to Late September
- Phase 5 – 20<sup>th</sup> Avenue SW, 21<sup>st</sup> Avenue SW, & 24<sup>th</sup> Street SW
  - Full Depth Reclamation
  - Mid September to Late October
- Phase 6 – 21<sup>st</sup> Avenue SW & 22<sup>nd</sup> Street SW
  - Mill & Overlay
  - Mid October to Late October

# Street Improvement Project West Newsletter

Page 2



## Order of Construction

### Mill & Overlay Areas

- Traffic Control
- Erosion Control
- Mill Bituminous Pavement
- Spot Concrete Removals
- Concrete Placement (7 day cure time)
- Bituminous Patching
- Install Bituminous Pavement
- Topsoil/Seeding

### Full Depth Reclamation Areas

- Traffic Control
- Erosion Control
- Reclaim Bituminous Pavement
- Salvage Reclaim Material
- Excavation of the Existing Subgrade to Make Room for Thicker Base Section.
- Install Salvaged Reclaim Material
- Spot Concrete Removals
- Storm Sewer Repairs
- Concrete Placement (7 day cure time)
- Install New Aggregate Base Material
- Final Grading of New Road Base Section
- Install Base Course of Bituminous Pavement
- Raise Water Valves & Manhole Castings in Pavement
- Install top Course of Bituminous Pavement
- Topsoil/Seeding



## Definitions/FAQ's

Mill and Overlay - The construction on the streets identified for mill and overlay will include grinding and removing the top course of bituminous pavement from the existing street surface and paving a new course of bituminous pavement in its place.

Full Depth Reclamation - The construction for these areas will consist of grinding the existing bituminous pavement and aggregate base together to create a recycled aggregate material known as "reclaim." The reclaim material will be salvaged and a portion of the subgrade will be excavated to make room for a thicker aggregate base section. The salvaged reclaim material will be installed and will be capped with new aggregate base, which will be shaped, compacted, and new bituminous pavement will be constructed.

Spot Concrete Removal and Replacement – Curb and gutter is planned to be replaced in isolated locations where it is a safety concern or is structurally compromised. If the curb and gutter spot repair locations are adjacent to driveway aprons, it is likely that a portion of the driveway aprons will need to be replaced. Replacement areas will be marked with pink paint prior to removal.

# Street Improvement Project West Newsletter

Page 3



## Definitions/FAQ's (continued)

Will standing water in the street be corrected with the project? – Standing water within the asphalt pavement will likely be corrected with this project. Water within the curb and gutter may not be corrected. The improvement is a street rehabilitation project and is not intended to correct all drainage and surface deficiencies but instead improve the driving surface and extend the life of the street.



## Construction

### Work Area

It is very common on these types of projects that area residents (especially children) become quite curious about the work the Contractor is performing. We ask that you please be respectful of and stay well clear of construction zones. Many hazards and dangers exist from heavy machinery, trenches, loose material, confined spaces, hot asphalt, etc. and often times are not recognizable by the general public. The Contractor has a responsibility to ensure safety on the project and within the construction area.



## Temporary Access Road

### Valleyside Townhomes & 33<sup>rd</sup> Street NW Development

Since 7<sup>th</sup> Avenue NW provides the only access to County Road 5 from the 33<sup>rd</sup> Street NW development and Valleyside Townhomes, the City has provided a temporary access road through Valleyside Townhomes and the Regency Mobile Home Park properties. Prior to construction operations on 7<sup>th</sup> Avenue NW, detour signage will be installed to help drivers navigate to County Road 5 through the temporary access road. Please refer to the attached 7<sup>th</sup> Avenue NW Area phasing figure for a visual aid.



## Access

Access to properties within the project areas will be difficult at times. To reduce the impact on you, the project areas have been divided into phases. Traffic in the mill & overlay areas will be able to drive on the milled surface until the new pavement is installed. Traffic in reclaim areas will be able to drive on the reclaimed surface until excavation operations begin. The street will temporarily be restored to a drivable surface after the new base material is installed, prior to the pavement installation. The section of road being worked on will be navigable periodically during construction; however, there will be periods of time when vehicle access will not be possible, and you will need to park on a portion of street that is not actively under construction and walk to your residence. If any spot curb and gutter, driveway, or sidewalk repairs are required in front of your entrance (it will be marked with pink paint if it is being replaced). After the concrete is replaced in these areas, you will not be able to drive over the new concrete for a period of 7 days to allow the concrete to build enough strength to be driven on. When paving begins, you should be able to drive on the new pavement surface in the evening of the installation, however we recommend gradual turns on the pavement surface as to not cause damage to the pavement. When the second lift of paving occurs, the contractor will spray a black binder material called "tack" on the first lift of pavement just prior to the installation of the second lift of pavement. We recommend not driving on the tack, as it is difficult to remove from vehicles.

# Street Improvement Project West Newsletter

Page 3



## Contacts

Moving forward, most project updates will be provided electronically on the City of Willmar's Construction Project Website, [www.WillmarConstruction.com](http://www.WillmarConstruction.com) and the App "My Willmar, MN". Please sign up for email and text message updates on the project website and/or app. If special access accommodations are needed or if you have questions or concerns at any time, please contact the Resident Project Representative Nate Thein 320-979-9070 or [Nate.Thein@bolton-menk.com](mailto:Nate.Thein@bolton-menk.com) or any of the people listed on the left side of the front page to this newsletter. Thank you in advance for your understanding and cooperation with this improvement project.

[www.WillmarConstruction.com](http://www.WillmarConstruction.com)



**Scan the QR  
code with your  
smartphone  
camera to visit  
the website!**

[App Store – My Willmar, MN](#)



**My Willmar, MN**   
City of Willmar  
Designed for iPad  
Free

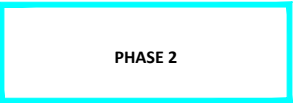




LEGEND



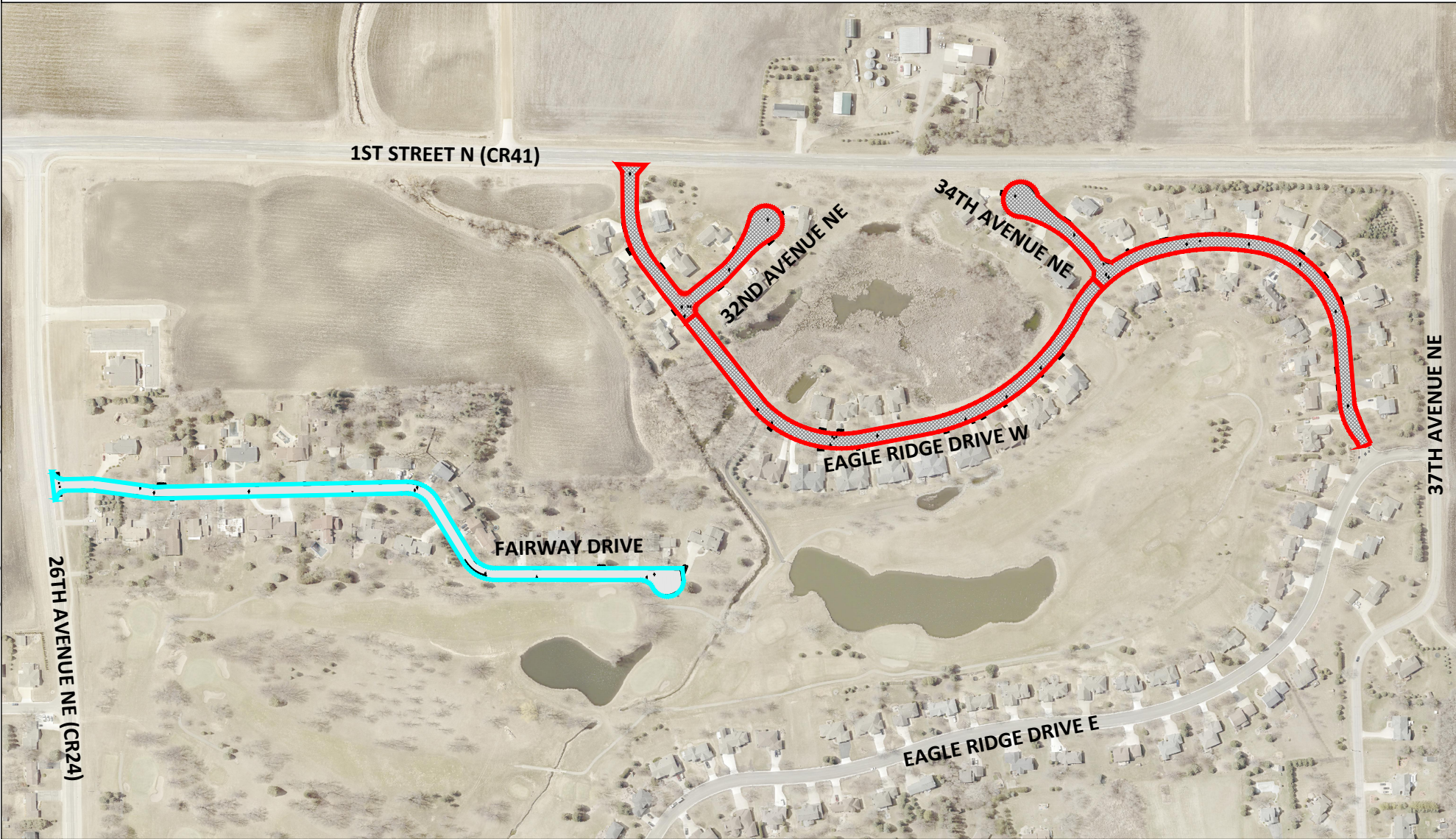
PHASE 1



PHASE 2



- 1.5" BITUMINOUS MILL & OVERLAY
- FULL DEPTH RECLAMATION



H:\WILL\OW\1132911\CAD\C3D\132911 Eagle Ridge Drive W Phasing Figure.dwg 6/17/2025 11:09:31 AM



