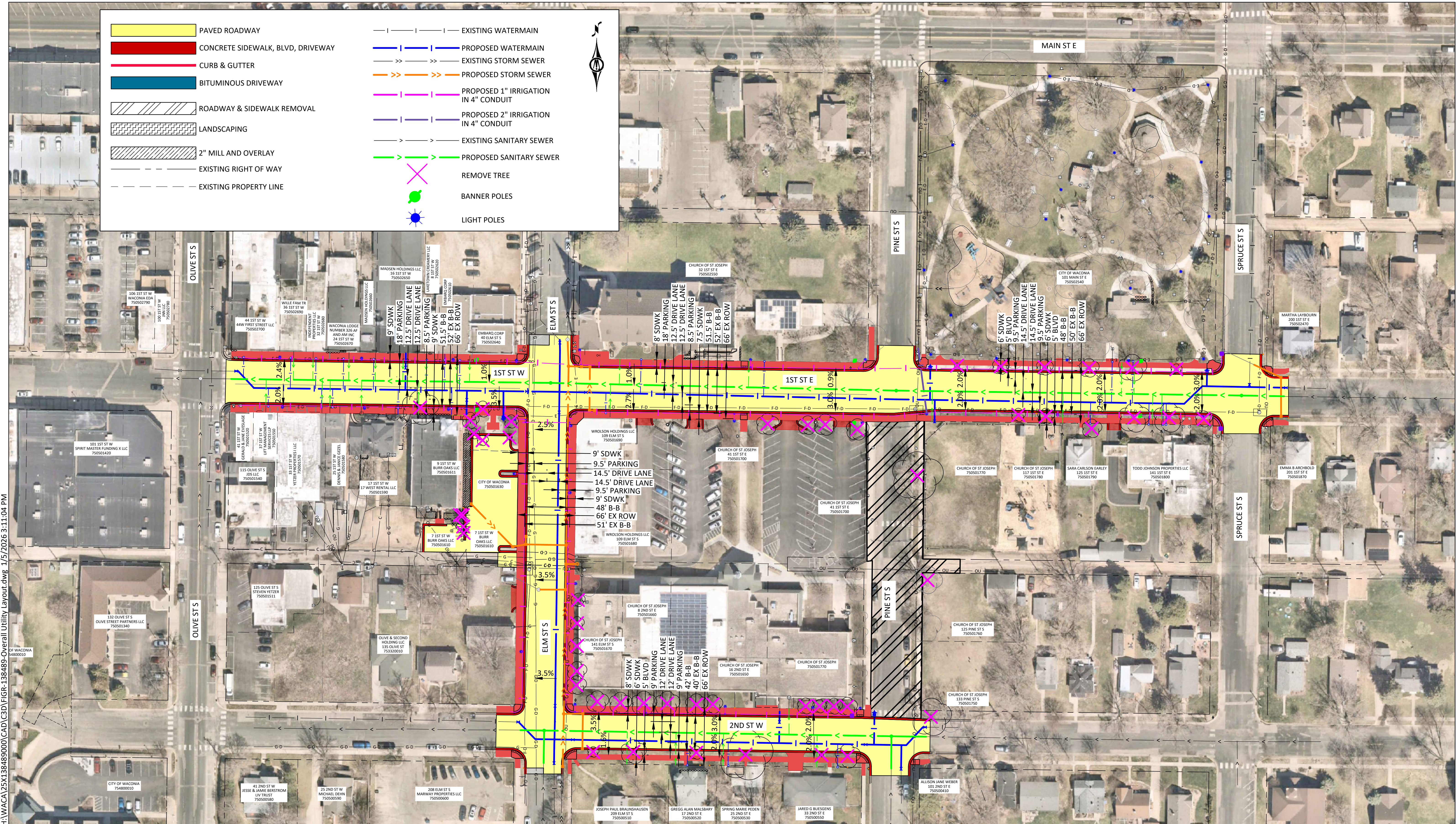




	PAVED ROADWAY		EXISTING WATERMAIN
	CONCRETE SIDEWALK, BLVD, DRIVEWAY		PROPOSED WATERMAIN
	CURB & GUTTER		EXISTING STORM SEWER
	BITUMINOUS DRIVEWAY		PROPOSED STORM SEWER
	ROADWAY & SIDEWALK REMOVAL		PROPOSED 1" IRRIGATION IN 4" CONDUIT
	LANDSCAPING		PROPOSED 2" IRRIGATION IN 4" CONDUIT
	2" MILL AND OVERLAY		EXISTING SANITARY SEWER
	EXISTING RIGHT OF WAY		PROPOSED SANITARY SEWER
	EXISTING PROPERTY LINE		REMOVE TREE
			BANNER POLES
			LIGHT POLES



H:\WACA\25X138489000\CAD\C3D\Overall Utility Layout.dwg, 1/5/2026 3:11:04 PM