



Real People. Real Solutions.

# Storm Sewer & Street Improvements Phase 1B

## Project Newsletter

Newsletter No. 1 – June 28, 2021

### Construction:

- Storm Sewer
- Watermain & Services
- Street Rehabilitation
- Turf Restoration

### Construction schedule:

Start: July 2021

Finish: Fall 2021

### City of Wyndmere

City Hall  
P.O. Box 220  
451 4<sup>th</sup> Street  
Shannon Utke  
701-640-7748

### Bolton & Menk, Inc.

3168 41<sup>st</sup> Street South  
Suite 2  
Fargo, ND 58104  
Phone: 701-566-5339  
Fax: 701-566-5348  
[www.bolton-menk.com](http://www.bolton-menk.com)

Barry D. Johnson, P.E.  
Wyndmere City Engineer  
Cell: 701-936-3695  
E-mail: [barry.johnson@bolton-menk.com](mailto:barry.johnson@bolton-menk.com)

Grant Kuper, P.E., C.F.M.  
Construction Representative  
Cell Phone: 701-540-7444  
E-mail: [grant.kuper@bolton-menk.com](mailto:grant.kuper@bolton-menk.com)

KPH, Inc.  
9530 39<sup>th</sup> Street S  
Fargo, ND 58104

Eric Merhiy, Project Manager  
Cell: 701-361-3412  
[eric@kphinc.net](mailto:eric@kphinc.net)



### Overview

KPH, Inc. and the City of Wyndmere are beginning the reconstruction of the Storm Sewer and Street Improvements Phase 1B project. This project will build on the project constructed last year and will include storm sewer, water system improvements, and new street construction. You will notice changes in construction activities in the coming days and weeks.



### Project Timeline

Competitive bids for the work were received on March 26, 2021 and was awarded to KPH, Inc. from Fargo, North Dakota on April 12, 2021.

KPH is currently scheduled to begin work along Elevator Road South of the football field on the week of July 5<sup>th</sup>, 2021. Prior to underground utility construction, they plan to reclaim the pavement, curb & gutter, and any affected trees. Some construction activities will look different than last year. This year, the contractor will be reclaiming the pavement rather than milling it. They will apply 3-4" of aggregate over the existing pavement. A reclaim machine will blend up the existing bituminous pavement and new aggregate base together. The contractor will leave this in place for resident access until underground utilities are ready to be installed.

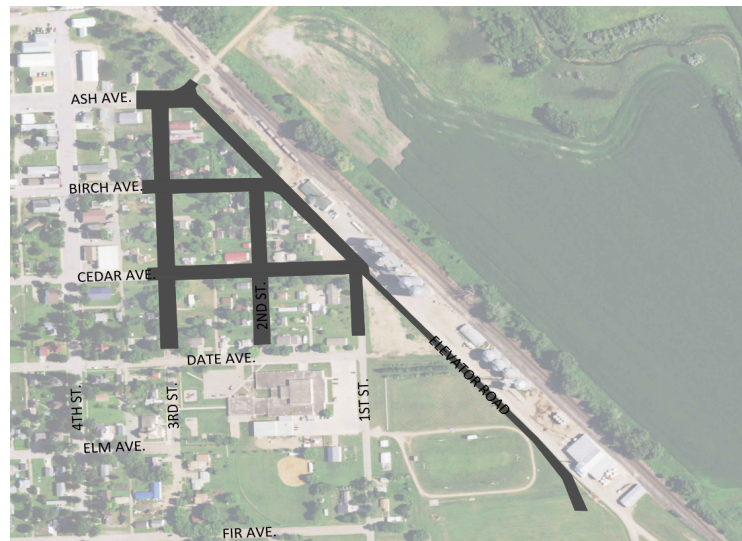


### Contacts

**Grant Kuper will be on site throughout the summer and will serve as the primary contact during construction. Grant can be reached at 701-540-7444 or [grant.kuper@bolton-menk.com](mailto:grant.kuper@bolton-menk.com).** Informational newsletters, such as this one, will be posted to the project website (<https://clients.bolton-menk.com/wyndmereimprovements/>) throughout the summer. Hard copies will also be available at City Hall. If you have questions or concerns at any time, please contact Grant Kuper at the phone number or email address listed.



### Map





Alert

### Detour and Access

During construction, access through the construction zone will be difficult and/or limited depending on the construction activity taking place.

Local traffic should obey road closed signs and find alternate routes around the active construction zone.

When possible, the contractor will provide temporary gravel for driveway access within the construction site. However, direct driveway access may be limited when excavation and other construction activity is occurring. In addition, when concrete curb, walk, and driveways are being constructed, access to driveways will be restricted for extended periods.

Wet weather will also make access difficult for periods of time. Please monitor the weather throughout the summer and plan accordingly. If rain is forecasted, residents are advised to park on adjacent streets to ensure that vehicles do not get trapped in driveways or stuck in mud.

Please also be advised that if you choose to drive on the closed road, there can sometimes be construction debris or other items that can damage vehicles. Driving through the construction site is at your own risk. If you are concerned about access during construction, or have questions, please contact Grant Kuper at 701-540-7444

### Disruptions to Sewer and Water Service

Water and sewer service will mostly be provided at all times. However, planned shutdowns and disruptions will occur. Your residence will be connected to a temporary water supply system until the new piping is installed and tested. This may result in a decrease in water pressure. Residents will be provided a notice delivered to the front door for any change in service conditions.

### Garbage and Mail

Garbage and recycling collection will continue on its regular schedule during construction. You should set your garbage and recycling containers out as you normally would. During times when the garbage truck is unable to access the front of your property for any reason, the contractor will label and move them to an accessible location for pickup and return them to you after collection.

Mail delivery will continue during the project. The contractor will set up temporary mailboxes in a centralized location that will be accessible to the postman. You will be notified if your mailbox location will be affected.



Construction Safety

### Work Area

It is very common on these types of projects that area residents (especially children) become quite curious about the work the Contractor is performing. We ask that you please be respectful of and stay well clear of construction zones. Many hazards and dangers exist from heavy machinery, trenches, loose material, confined spaces, hot asphalt, etc. and often times are not recognizable by the general public. The Contractor has responsibility to ensure safety on the project and within the construction area. Any direction from the Contractor regarding safety must be heeded; likewise, if you observe an unsafe condition please report it to the Construction Representative immediately.

Please take time to check out the project website at  
<https://clients.bolton-menk.com/wyndmereimprovements/>